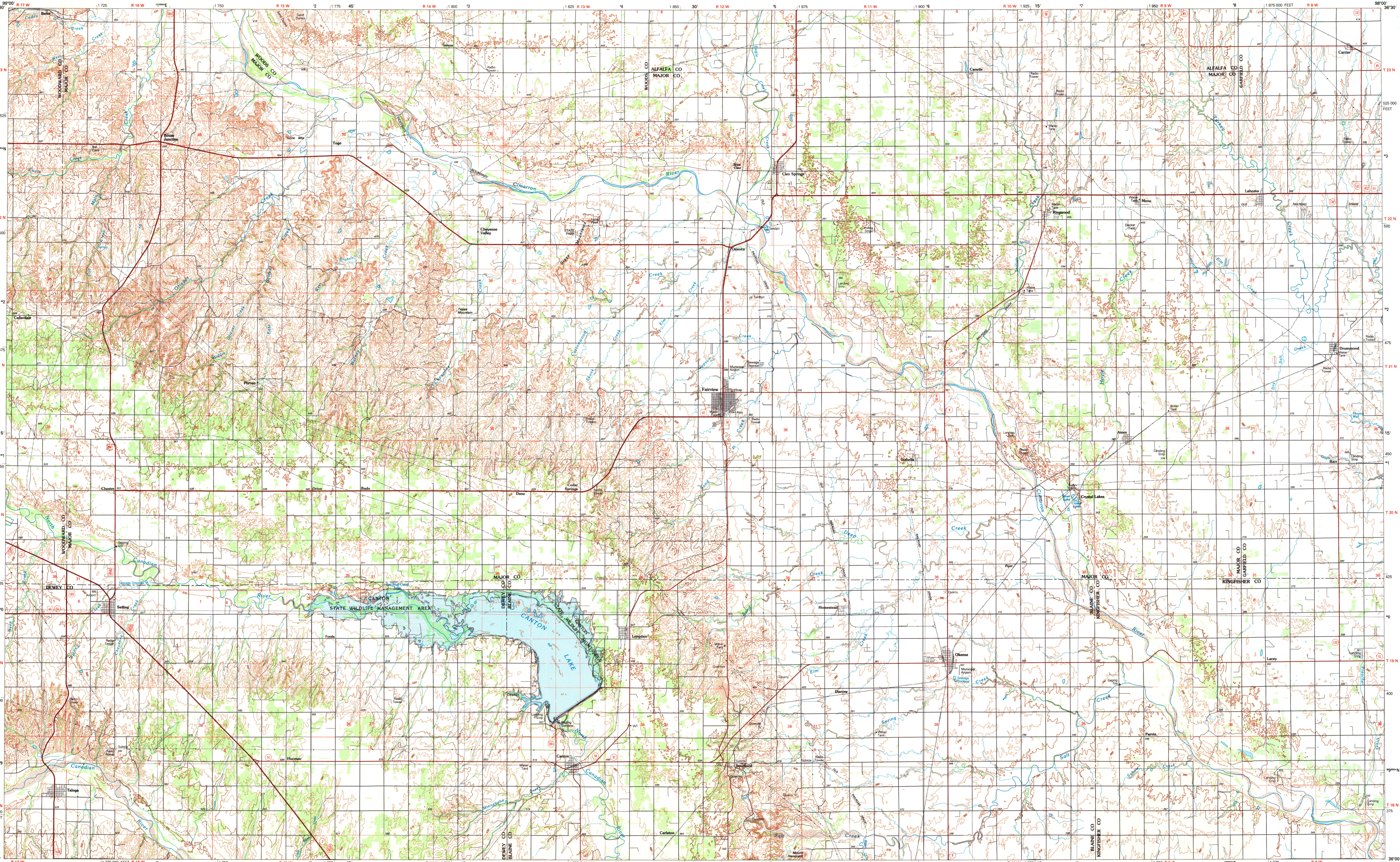


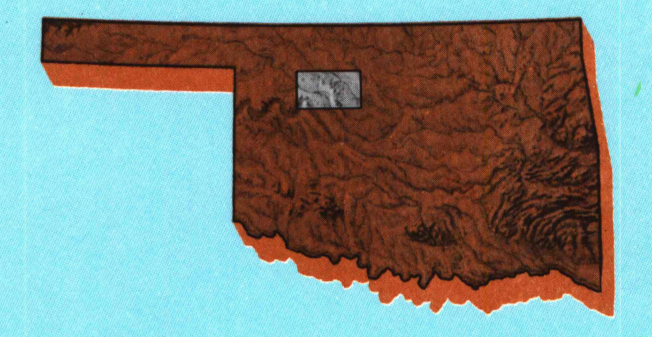
FAIRVIEW, OKLAHOMA

30 X 60 MINUTE SERIES (TOPOGRAPHIC)

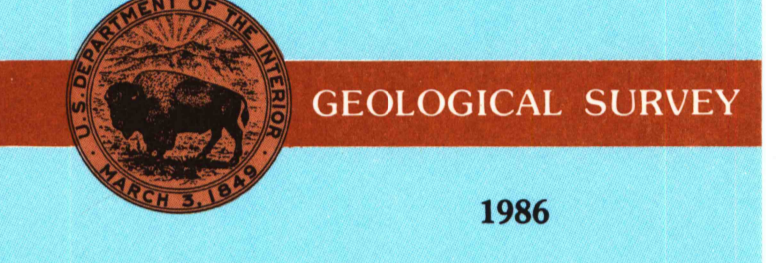


Fairview OKLAHOMA

1:100 000-scale metric topographic map



- 30 X 60 MINUTE QUADRANGLE SHOWING
- Contours and elevations in meters
 - Highways, roads and other manmade structures
 - Water features
 - Woodland areas
 - Geographic names



Produced by the United States Geological Survey
 Compiled from USGS 1:250,000-scale topographic maps dated 1969-1983. Planimetry revised from aerial photographs taken 1981 and other source data. Revised information not field checked. Map edited 1986.
 Projection and 10 000-meter grid, zone 14 Universal Transverse Mercator
 25 000-foot grid ticks based on Oklahoma coordinate system, north zone. 1927 North American Datum
 To place on the predicted North American Datum 1983 move the projection lines 1 meter south and 31 meters east.
 There may be private inholdings within the boundaries of the National or State reservations shown on this map.

CONTOUR INTERVAL 10 METERS
 NATIONAL GEODETIC VERTICAL DATUM OF 1929
 ELEVATIONS SHOWN TO THE NEAREST METER

THIS MAP COMPLIES WITH NATIONAL MAP ACCURACY STANDARDS

Meters	Feet
1	3.2808
2	6.5617
3	9.8425
4	13.1234
5	16.4042
6	19.6850
7	22.9659
8	26.2467
9	29.5275
10	32.8084

To convert meters to feet multiply by 3.2808
 To convert feet to meters multiply by 0.3048

UTM grid convergence (NM and 100 magnetic declination (MM) at center of map. Diagram is approximate.

ADJOINING MAPS	1	2	3
1	Buffalo		
2	Alba		
3	Pocahontas		
4	Woodward		
5	Franklin		
6	Wagoner		
7	Delaware		
8	Oklahoma City N.		

FOR SALE BY U.S. GEOLOGICAL SURVEY, DENVER, COLORADO 80225 OR RESTON, VIRGINIA 22096

A.H. ROBINSON MAP LIBRARY
 JUL 19 1990
 U.S. Regional Depository Copy
 DO NOT DISCARD
 University of Wisconsin Madison

Topographic Map Symbols

Primary highway, hard surface	
Secondary highway, hard surface	
Light duty road, principal street, hard or improved surface	
Other road or street, trail	
Route marker: Interstate, U. S. State	
Railroad: standard gage; narrow gage	
Bridge: overpass; underpass	
Tunnel: road; railroad	
Build-up area, locality, elevation	
Airport; landing field; landing strip	
National boundary	
State boundary	
County boundary	
National or State reservation boundary	
Land grant boundary	
U. S. public lands survey: range, township, section	
Range, township, section line: projected	
Power transmission line: pipeline	
Dam; dam with lock	
Cemetery; building	
Windmill; water well; spring	
Mine shaft; salt or brine mine; quarry; gravel pit	
Campground; picnic area; U. S. location monument	
Ruins; cliff dwelling	
Disturbed surface: strip mine, lava, sand	
Contours: index; intermediate; supplementary	
Bathymetric contours: index; intermediate	
Stream, lake: perennial; intermittent	
Rapids, large and small; falls, large and small	
Area to be submerged: marsh, swamp	
Land subject to controlled inundation: wooded	
Scrub; mangrove	
Orchard; vineyard	

A pamphlet describing topographic maps is available on request
 B006-9/8 03
 SET 3