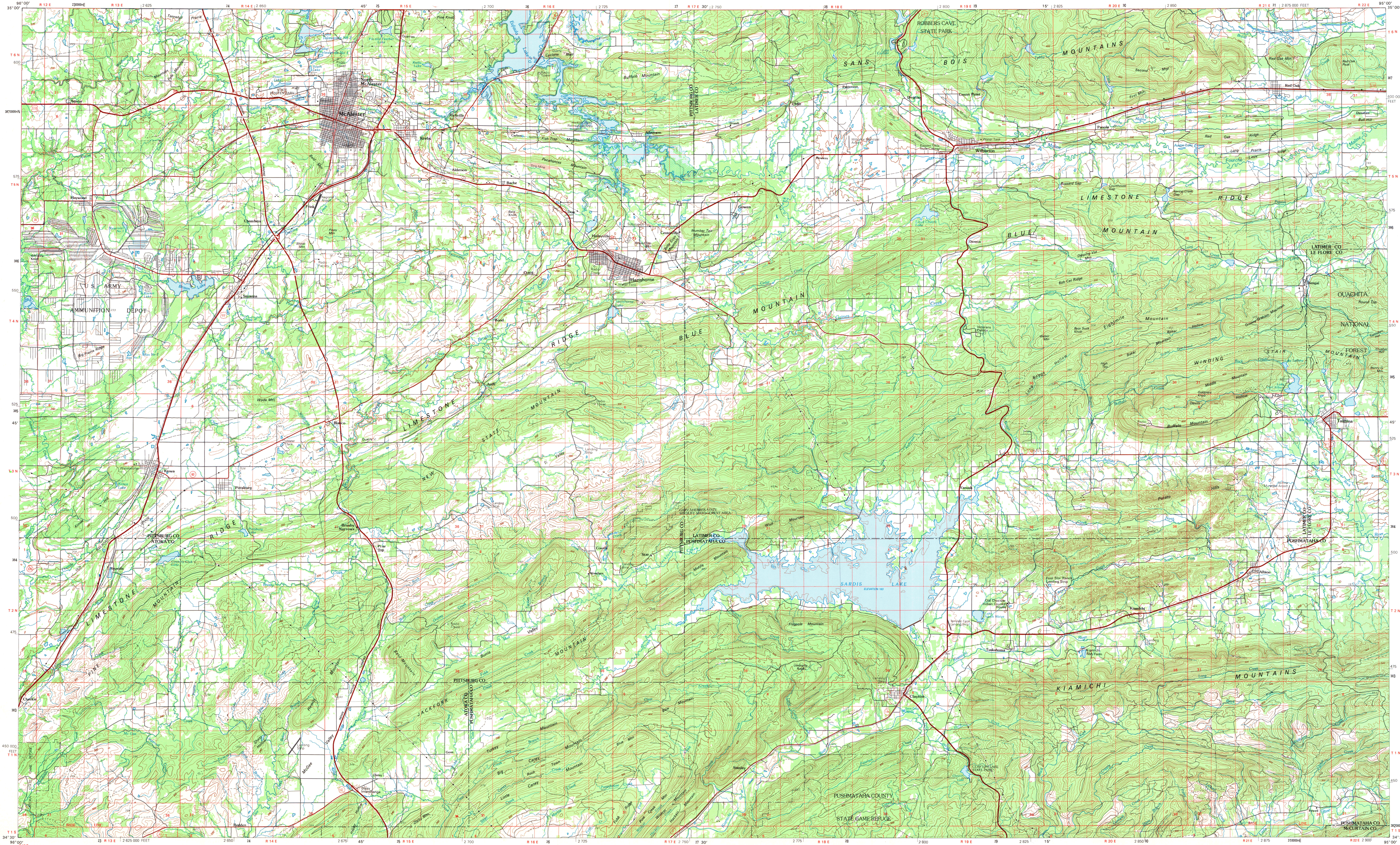


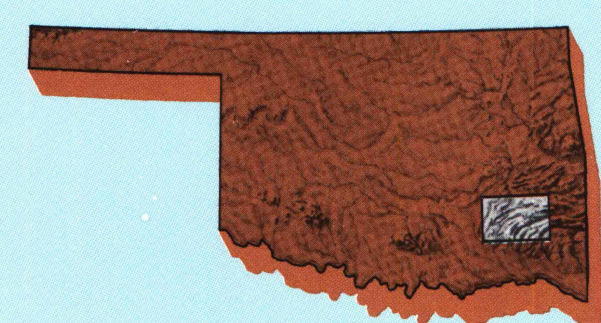
MC ALESTER, OKLAHOMA

30 X 60 MINUTE SERIES (TOPOGRAPHIC)



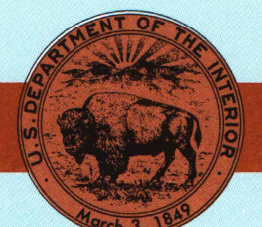
McAlester OKLAHOMA

1:100 000-scale metric topographic map



30 X 60 MINUTE QUADRANGLE SHOWING

- Contours and elevations in meters
- Highways, roads and other manmade structures
- Water features
- Woodland areas
- Geographic names



GEOLOGICAL SURVEY

1991

Produced by the United States Geological Survey

Compiled from USGS 1:24 000-scale topographic maps dated 1957-1979. Planimetry revised from aerial photographs taken 1960-81 and other source data. Revised information not field checked. Map edited 1991. Projection and 10 000-meter grid, zone 15, Universal Transverse Mercator. 25 000-foot grid ticks based on Oklahoma coordinate system, south zone 1927 North American Datum. To place on the predicted North American Datum 1983, move the projection lines 6 meters south and 22 meters east. There may be private inholdings within the boundaries of the National or State reservations shown on this map.

CONTOUR INTERVAL 20 METERS
NATIONAL GEODETIC VERTICAL DATUM OF 1929
ELEVATIONS SHOWN TO THE NEAREST METER

THIS MAP COMPLIES WITH NATIONAL MAP ACCURACY STANDARDS

CONVERSION TABLE		DECLINATION DIAGRAM		ADJOINING MAPS		
Meters	Feet	1	2	3	4	5
1	3.2808	1	2	3	4	5
2	6.5616	6	7	8	9	10
3	9.8424	11	12	13	14	15
4	13.1232	16	17	18	19	20
5	16.4040	21	22	23	24	25
6	19.6848	26	27	28	29	30
7	22.9656	31	32	33	34	35
8	26.2464	36	37	38	39	40
9	29.5272	41	42	43	44	45
10	32.8080	46	47	48	49	50

To convert meters to feet multiply by 3.2808
To convert feet to meters multiply by 0.3048

UTM grid convergence (km) and 1991 magnetic declination (MM) at center of map. Diagram is approximate.

1 Shawnee
2 Eufaula
3 Fort Smith
4 Ada
5 Mena
6 Tahlequah
7 Ardmore
8 De Queen

FOR SALE BY U.S. GEOLOGICAL SURVEY
DENVER, COLORADO 80225, OR RESTON, VIRGINIA 22092

A.H. JOHNSON
MAP LIBRARY
DEC 27 1991
U.S. Regional Depository Copy
DO NOT DISCARD
University of Wisconsin
Madison

Topographic Map Symbols

Primary highway, hard surface	
Secondary highway, hard surface	
Light duty road, principal street, hard or improved surface	
Other road or street, trail	
Road marker, international U.S. State	
Railroad, standard gage, narrow gage	
Bridge, overpass, underpass	
Tunnel, road, railroad	
Rail up or down, loading, elevation	
Airport, landing field, landing strip	
National boundary	
State boundary	
County boundary	
National or State reservation boundary	
Land grant boundary	
U.S. public lands survey, range, township, section	
Range, township, section line, protected	
Power transmission line, pipeline	
Dam, dam with lock	
Cemetery, building	
Windmill, water well, spring	
Mine shaft, adit or lower mine, quarry, gravel pit	
Campground, picnic area, U.S. location monument	
Ruin, cliff dwelling	
Distorted surface: strip mine, lava, sand	
Contours: index, intermediate, supplementary	
Bathymetric contours: index, intermediate	
Stream, lake, perennial, intermittent	
Rapids, large and small; falls, large and small	
Area to be submerged; marsh, swamp	
Land subject to controlled inundation; woodland	
Scrub, mangrove	
Orchard; vineyard	

A pamphlet describing topographic maps is available on request

BOSS-98
E SET

MC ALESTER, OKLAHOMA
34095-E1-TM-100
1991

SCALE 1:100 000
1 CENTIMETER ON THE MAP REPRESENTS 1 KILOMETER ON THE GROUND
CONTOUR INTERVAL 20 METERS

INTERIOR-GEOLOGICAL SURVEY, RESTON, VIRGINIA-1991