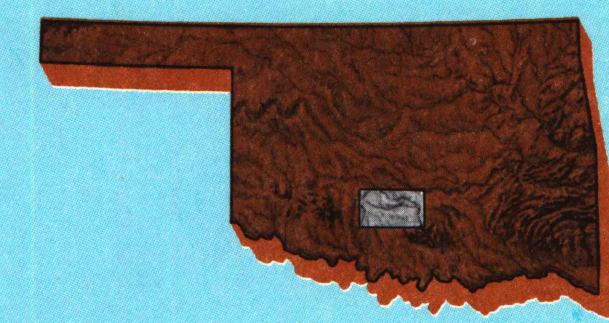


Pauls Valley

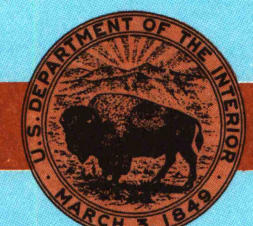
OKLAHOMA

1:100 000-scale metric
topographic map



30 X 60 MINUTE QUADRANGLE
SHOWING

- Contours and elevations in meters
- Highways, roads and other manmade structures
- Water features
- Woodland areas
- Geographic names



GEOLOGICAL SURVEY

1986

Produced by the United States Geological Survey

Compiled from USGS 1:24 000-scale topographic maps dated 1964-1982. Planimetry revised from aerial photographs taken 1981 and other source data. Revised information not field checked. Map edited 1986.

Projection and 10 000-meter grid, zone 14, Universal Transverse Mercator
25 000-foot grid ticks based on Oklahoma coordinate system, south zone
1927 North American Datum
To place on the predicted North American datum 1983, move the projection lines 5 meters south and 28 meters east
There may be private inholdings within the boundaries of the National or State reservations shown on this map

CONTOUR INTERVAL 10 METERS
NATIONAL GEODETIC VERTICAL DATUM OF 1929
ELEVATIONS SHOWN TO THE NEAREST METER

THIS MAP COMPLIES WITH NATIONAL MAP ACCURACY STANDARDS

CONVERSION TABLE

Meters	Feet
1	3.2808
2	6.5617
3	9.8425
4	13.1234
5	16.4042
6	19.6850
7	22.9659
8	26.2467
9	29.5276
10	32.8084

To convert meters to feet multiply by 3.2808

To convert feet to meters multiply by 0.3048

DECLINATION DIAGRAM

The diagram illustrates the relationship between three types of north at a specific location. A vertical line represents True North (T). A line pointing slightly to the right of vertical represents Magnetic North (M), with an angle of 0°51' between them. A line pointing further to the right represents Grid North (G), with an angle of 1°24' between it and the True North line. A scale bar below the lines indicates a distance of 15 MILES.

UTM grid convergence (G) and 1983 datum (D) at center of map
Diagram is approximate

ADJOINING MAPS

1	2	3
4	5	6
7	8	

- 1 Anadarko
- 2 Oklahoma City South
- 3 Shawnee
- 4 Lawton
- 5 Muskogee
- 6 Burkburnett
- 7 Ardmore
- 8 Tahlequah

FOR SALE BY U. S. GEOLOGICAL SURVEY, DENVER, COLORADO 80225
OR RESTON, VIRGINIA 22092

A.H. ROBINSON
MAP LIBRARY
JUL 19 1990
U.S. Regional
Depository Copy
DO NOT DISCARD

University of Wisconsin

Topographic Map Symbols

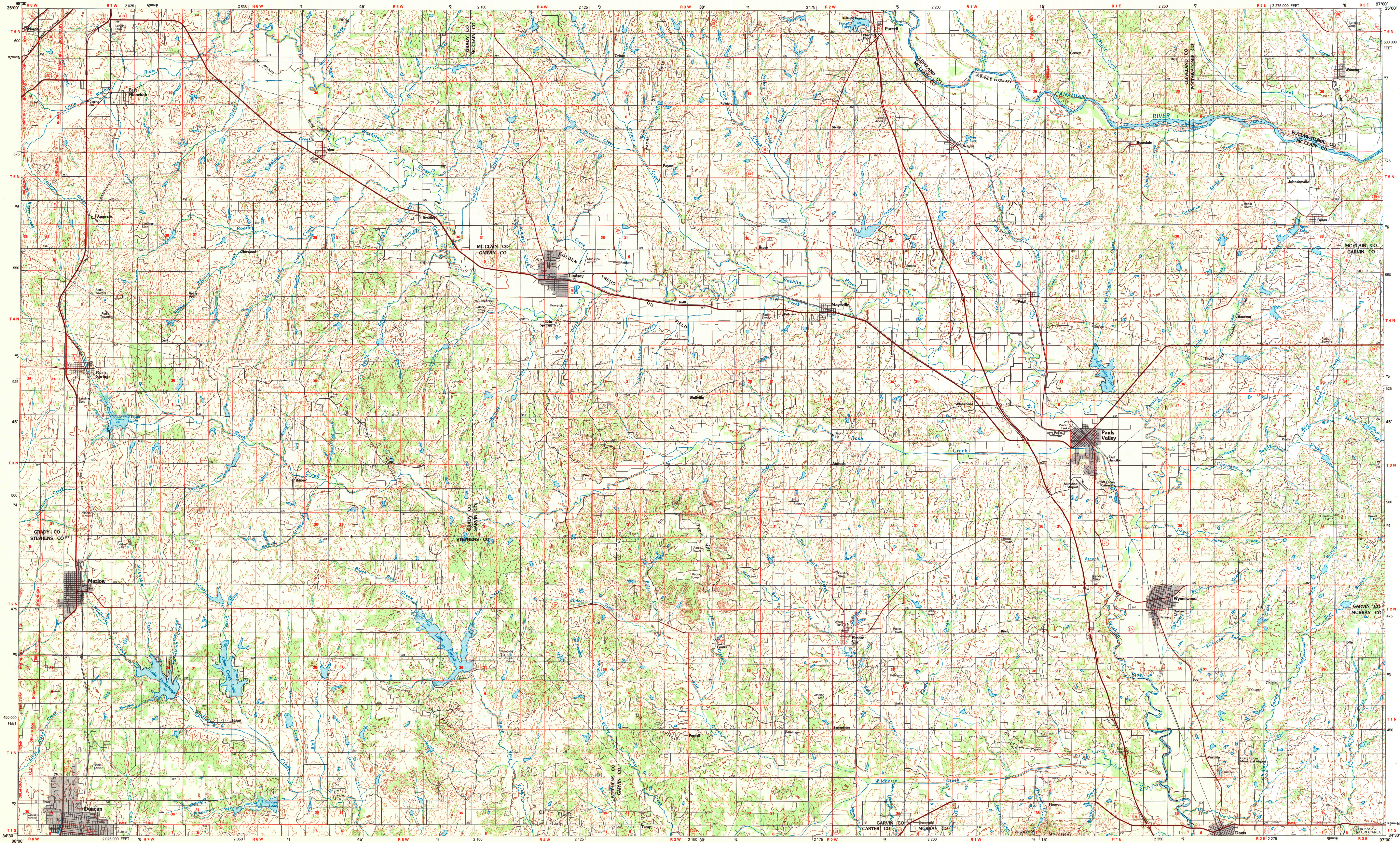
Primary highway, hard surface	Secondary highway, hard surface	Light duty road, principal street, hard or improved surface	Other road or street, trail	Route marker: interstate; U. S.; State	Railroad: standard gauge; narrow gauge	Bridge: overpass; underpass	Tunnel: road; railroad	Built up area, locality, elevation	Airport; landing field; landing strip	National boundary	State boundary	County boundary	National or State reservation boundary	Land grant boundary	U. S. public lands survey: range, township; section	Range, township; section line: protected	Power transmission line; pipeline	Dam; dam with lock	Cemetery; building	Windmill; water well; spring	Mine shaft; adit or ore vein; quarry; gravel pit	Campground; picnic area; U. S. location monument	Ruins; cliff dwelling	Distorted surface: strip mine, lava, sand	Contours: index, intermediate, supplementary	Hydrographic contours: index, intermediate	Stream, lake: perennial; intermittent	Rapids, large and small; falls, large and small	Area to be submerged; marsh, swamp	Land subject to controlled inundation; woodland	Scrub; mangrove	Orchard; vineyard
-------------------------------	---------------------------------	---	-----------------------------	--	--	-----------------------------	------------------------	------------------------------------	---------------------------------------	-------------------	----------------	-----------------	--	---------------------	---	--	-----------------------------------	--------------------	--------------------	------------------------------	--	--	-----------------------	---	--	--	---------------------------------------	---	------------------------------------	---	-----------------	-------------------

A pamphlet describing topographic maps is available on request.

BC2696-00

PAULS VALLEY, OKLAHOMA

30 X 60 MINUTE SERIES (TOPOGRAPHIC)



PAULS VALLEY, OKLAHOMA
34097-E1-TM-100