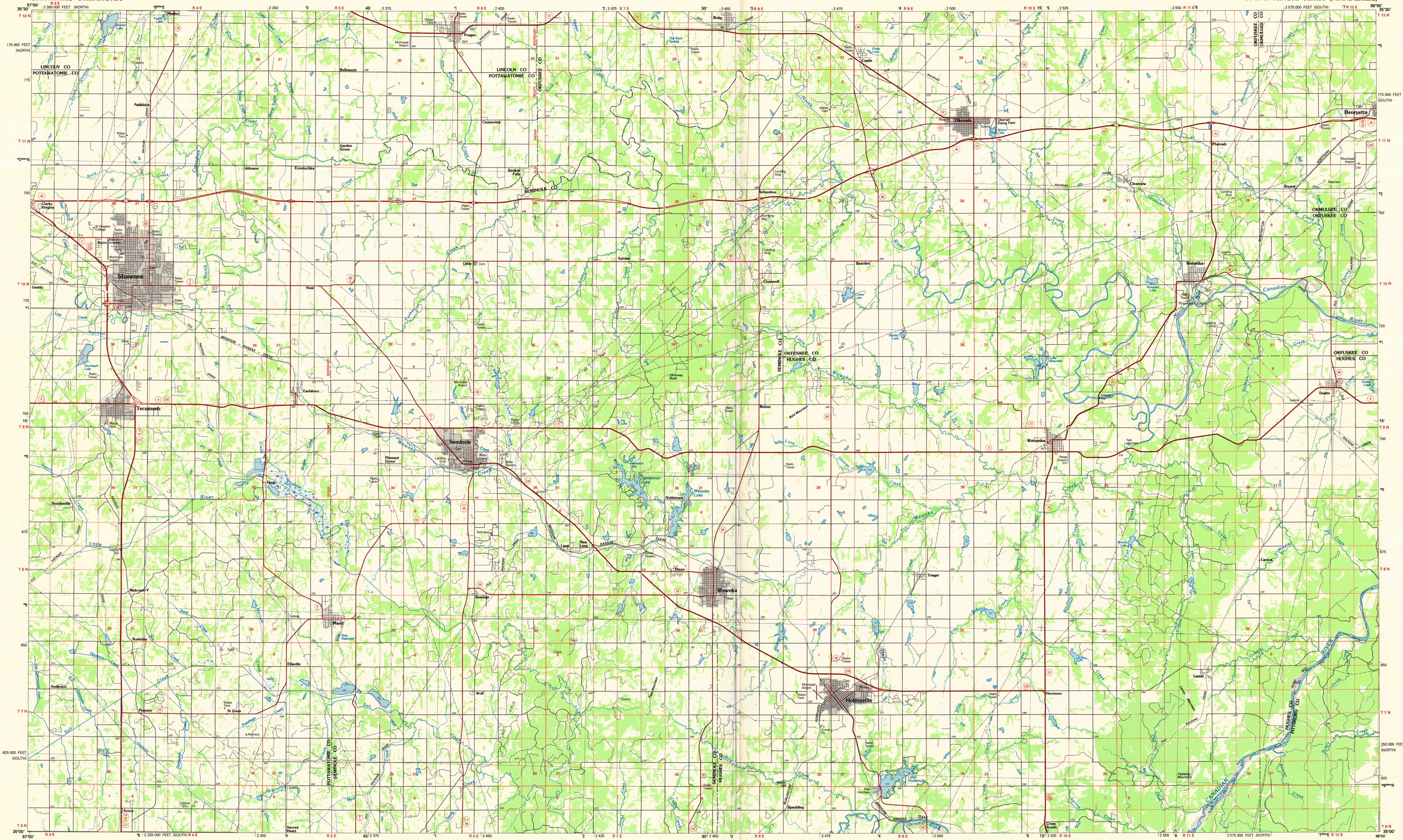


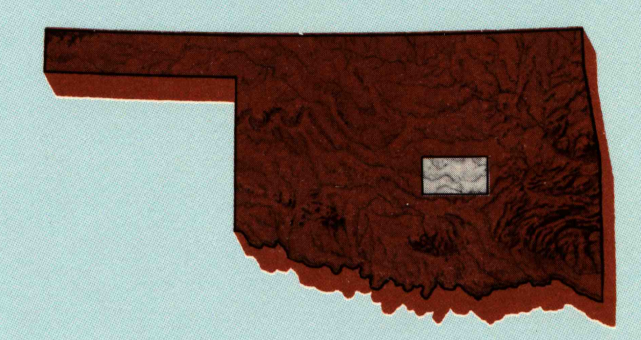
SHAWNEE, OKLAHOMA

30 X 60 MINUTE SERIES (PLANIMETRIC)



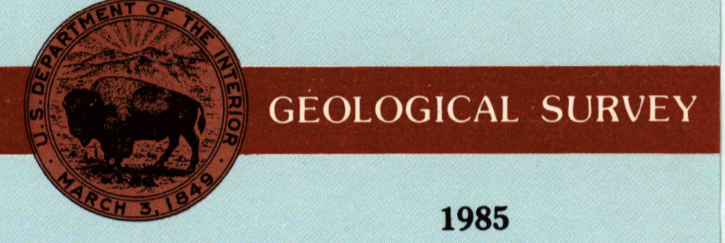
Shawnee OKLAHOMA

1:100 000-scale planimetric map



30 X 60 MINUTE QUADRANGLE SHOWING

- Elevations in meters
- Highways, roads and other manmade structures
- Water features
- Woodland areas
- Geographic names



1985

Produced by the United States Geological Survey
 Compiled from USGS 1:250 000-scale topographic maps dated 1967-1979. Planimetry revised from aerial photographs taken 1980-1981 and other source data. Revised information not field checked. Map edited 1985.
 Projection and 10 000-meter grid, zone 14 Universal Transverse Mercator
 25 000-foot grid ticks based on Oklahoma coordinate system, south and north zones. 1927 North American Datum
 To place on the predicted North American Datum 1983 move the projection lines 5 meters south and 25 meters east

NATIONAL GEODETIC VERTICAL DATUM OF 1929 ELEVATIONS SHOWN TO THE NEAREST METERS

THIS MAP COMPLIES WITH NATIONAL MAP ACCURACY STANDARDS

CONVERSION TABLE		DECLINATION DIAGRAM		ADJOINING MAPS		
Meters	Feet	1977	1978	1	2	3
1	3.2808	10°	10°	1	2	3
2	6.5616	11°	11°	4	5	
3	9.8424	12°	12°	6	7	8
4	13.1232	13°	13°			
5	16.4040	14°	14°			
6	19.6848	15°	15°			
7	22.9656	16°	16°			
8	26.2464	17°	17°			
9	29.5272	18°	18°			
10	32.8080	19°	19°			

To convert meters to feet multiply by 3.2808
 To convert feet to meters multiply by 0.3048

UTM grid convergence (CM) and 1983 magnetic declination (MGD) at center of map. Diagram is approximate.

1 Oklahoma City
 2 Bartlesville
 3 Muskogee
 4 Oklahoma City
 5 Eufaula
 6 Pauls Valley
 7 Ada
 8 McAlester

FOR SALE BY U. S. GEOLOGICAL SURVEY, DENVER, COLORADO 80225 OR RESTON, VIRGINIA 22092

Topographic Map Symbols

- Primary highway, hard surface
- Secondary highway, hard surface
- Light duty road, gravel street, hard or improved surface
- Other road or street, road
- Route marker: Interstate, U. S.; State
- Railroad: standard gauge, narrow gauge
- Bridge: concrete, underpass
- Tunnel: rock, railroad
- Built up area: locality, elevation
- Airport: landing field; landing strip
- National boundary
- State boundary
- County boundary
- National or State reservation boundary
- Land grant boundary
- U. S. public lands survey: range, township, section
- Range, township, section line: promontory
- Power transmission line; pipeline
- Dam; dam with lock
- Cemetery: building
- Well; water well, spring
- Mine shaft; adit or cave mine, quarry; gravel pit
- Campground; picnic area; U. S. location monument
- Ruin; cliff dwelling
- Disrupted surface: strip mine, lava, sand
- Contour: index; intermediate; supplementary
- Bathymetric contours: index; intermediate
- Stream, lake: perennial; intermittent
- Rapids, large and small; falls, large and small
- Area to be submerged; marsh, swamp
- Land subject to controlled inundation; woodflood
- Swamp; mangrove

SHAWNEE, OKLAHOMA 35096-A1-PL-100

1985

SCALE 1:100 000

1 CENTIMETER ON THE MAP REPRESENTS 1 KILOMETER ON THE GROUND

