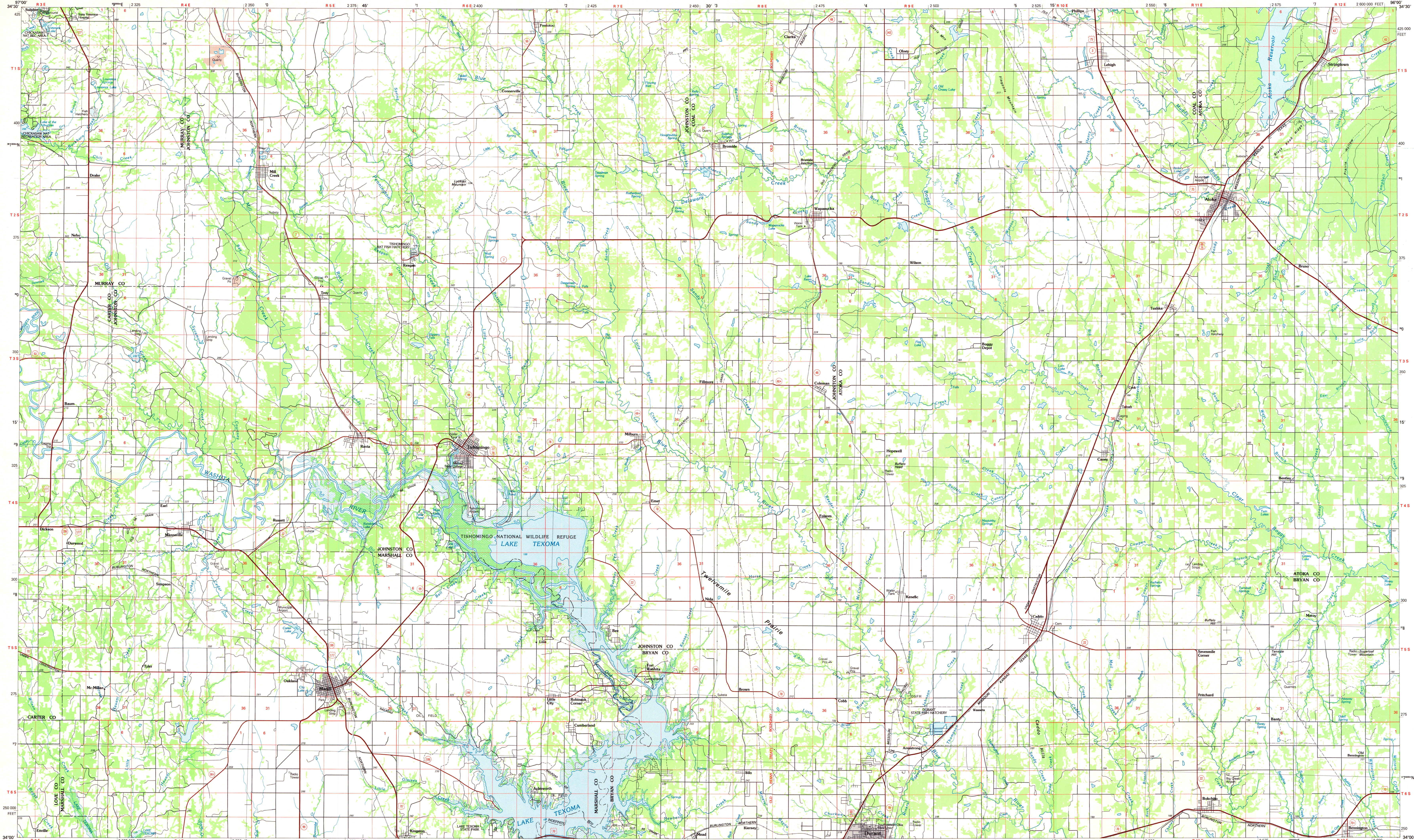


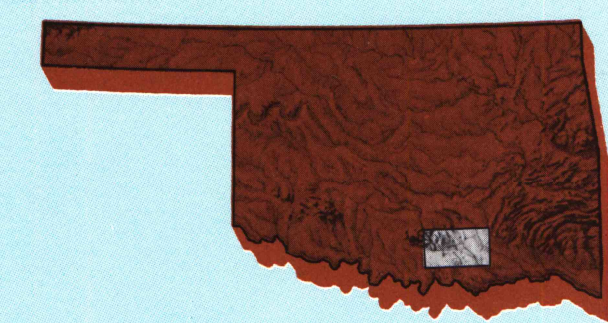
TISHOMINGO, OKLAHOMA

30 X 60 MINUTE SERIES (PLANIMETRIC)



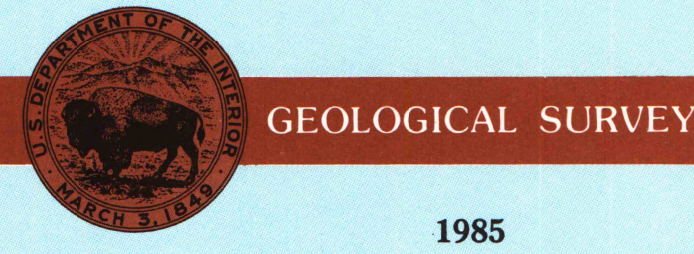
Tishomingo OKLAHOMA

1:100 000-scale planimetric map



30 X 60 MINUTE QUADRANGLE SHOWING

- Elevations in meters
- Highways, roads and other manmade structures
- Water features
- Woodland areas
- Geographic names



Produced by the United States Geological Survey
 Compiled from USGS 1:24 000-scale topographic maps dated 1956-1957. Planimetry revised from aerial photographs taken 1981 and 1982 and other source data. Revised information not field checked. Map edited 1985.
 Projection and 10 000-meter grid, zone 14
 Universal Transverse Mercator
 25 000-foot grid ticks based on Oklahoma coordinate system, south zone. 1927 North American Datum
 To place on the predicted North American Datum 1983 move the projection lines 7 meters south and 25 meters east
 There may be private inholdings within the boundaries of the National or State reservations shown on this map

NATIONAL GEODETIC VERTICAL DATUM OF 1929 ELEVATIONS SHOWN TO THE NEAREST METER

THIS MAP COMPLIES WITH NATIONAL MAP ACCURACY STANDARDS

CONVERSION TABLE		DECLINATION DIAGRAM		ADJOINING MAPS	
Meters	Feet	MAGNETIC		GRID	
1	3.2808	1	2	1	2
2	6.5617	3	4	3	4
3	9.8425	5	6	5	6
4	13.1234	7	8	7	8
5	16.4042	9	10	9	10
6	19.6850	To convert meters to feet multiply by 3.2808		To convert feet to meters multiply by 0.3048	
7	22.9658	UTM grid convergence (NW and SW magnetic declination 1983) at center of map. Diagram is approximate.		1. Preak Valley 2. Ada 3. McAlester 4. Ardmore 5. Ardmore 6. Chambliss 7. Sherman 8. Paris	
8	26.2467				
9	29.5275				
10	32.8084				

FOR SALE BY U.S. GEOLOGICAL SURVEY, DENVER, COLORADO 80225 OR RESTON, VIRGINIA 22092

Topographic Map Symbols

- Primary highway, hard surface
- Secondary highway, hard surface
- Light duty road, principal street, hard or improved surface
- Other road or street: trail
- Route marker: Interstate, U. S., State
- Railroad: standard gage; narrow gage
- Bridge: overpass; underpass
- Tunnel: road, railroad
- Built up area; locality; elevation
- Airport: landing field; landing strip
- National boundary
- State boundary
- County boundary
- National or State reservation boundary
- Land grant boundary
- U. S. public lands survey: range, township, section
- Range, township, section line, unpatented
- Power transmission line; pipeline
- Dam: dam with lock
- Cemetery; building
- Wellhead; water well; spring
- Mine shaft; cut or cave mine, quarry; gravel pit
- Campground; picnic area; U. S. location monument
- Ruins: cliff dwelling
- Distorted surface: strip mine, levee, sand
- Contour: index; intermediate; supplementary
- Bathymetric contour: index; intermediate
- Stream: lake; perennial; intermittent
- Rapid, large and small; falls, large and small
- Area to be submerged; marsh, swamp
- Land subject to controlled inundation; woodland
- Scrub; mangrove
- Orchard; vineyard