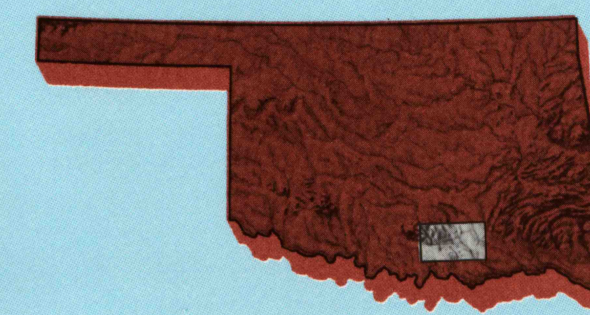


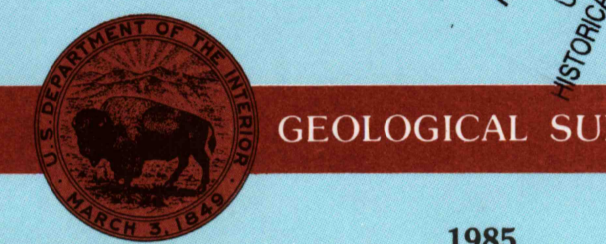
# Tishomingo OKLAHOMA

1:100 000-scale metric  
topographic map



30 X 60 MINUTE QUADRANGLE  
SHOWING

- Contours and elevations in meters
- Highways, roads and other manmade structures
- Water features
- Woodland areas
- Geographic names



1985

Produced by the United States Geological Survey  
Compiled from USGS 1:250 000-scale topographic maps dated 1956-1957. Planimetry revised from aerial photographs taken 1981 and 1982 and other source data. Revised information not field checked.  
Map edited 1985

Projection and 10 000-meter grid, zone 14  
Universal Transverse Mercator  
25 000-foot grid ticks based on Oklahoma coordinate system, south zone. 1927 North American Datum  
To place on the predicted North American Datum 1983 move the projection lines 7 meters south and 25 meters east  
There may be private in-holdings within the boundaries of the National or State reservations shown on this map

CONTOUR INTERVAL 10 METERS  
NATIONAL GEODETIC VERTICAL DATUM OF 1929  
ELEVATIONS SHOWN TO THE NEAREST METER

THIS MAP COMPLES WITH NATIONAL MAP ACCURACY STANDARDS

FOR SALE BY U.S. GEOLOGICAL SURVEY  
P.O. BOX 25286, DENVER, COLORADO 80225

CONVERSION TABLE		DECLINATION DIAGRAM		ADJOINING MAPS		
Meters	Feet	MAGNETIC		1	2	3
1	3.2808			4	5	
2	6.5617			6	7	8
3	9.8425					
4	13.1234					
5	16.4042					
6	19.6850					
7	22.9659					
8	26.2467					
9	29.5275					
10	32.8084					

To convert meters to feet multiply by 3.2808  
To convert feet to meters multiply by 0.3048

UTM grid conversion (GTM and 1983 magnetic declination) is at center of map. Diagram is approximate.

1 Pauls Valley  
2 Ada  
3 McAlester  
4 Ardmore  
5 Andlers  
6 Coalgateville  
7 Sherman  
8 Paris



## Topographic Map Symbols

- Primary highway, hard surface
- Secondary highway, hard surface
- Light duty road, principal street, hard or improved surface
- Other road or street, trail
- Route marker: Interstate, U. S., State
- Railroad: standard gauge, narrow gauge
- Bridge: covered, underpass
- Tunnel: road, railroad
- Built up area, locality, elevation
- Airport: landing field, landing strip
- National boundary
- State boundary
- County boundary
- National or State reservation boundary
- Land grant boundary
- U. S. public lands survey: range, township, section
- Range, township, section line: protruded
- Power transmission line: pipeline
- Dam: dam with lock
- Cemetery: building
- Woods: water well, spring
- Mine shaft: adit or cave; mine, quarry, gravel pit
- Campground; picnic area; U. S. location monument
- Roofs: cliff dwelling
- Dashed surface strip: mine, levee, sand
- Contours: index, intermediate, supplementary
- Bathymetric contours: index, intermediate
- Stream, lake: perennial; intermittent
- Rapids, large and small; falls, large and small
- Area to be submerged: water, swamp
- Land subject to controlled inundation; woodland
- Scrub: mangrove
- Orchard; vineyard

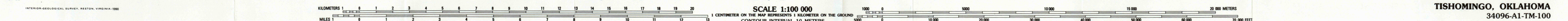
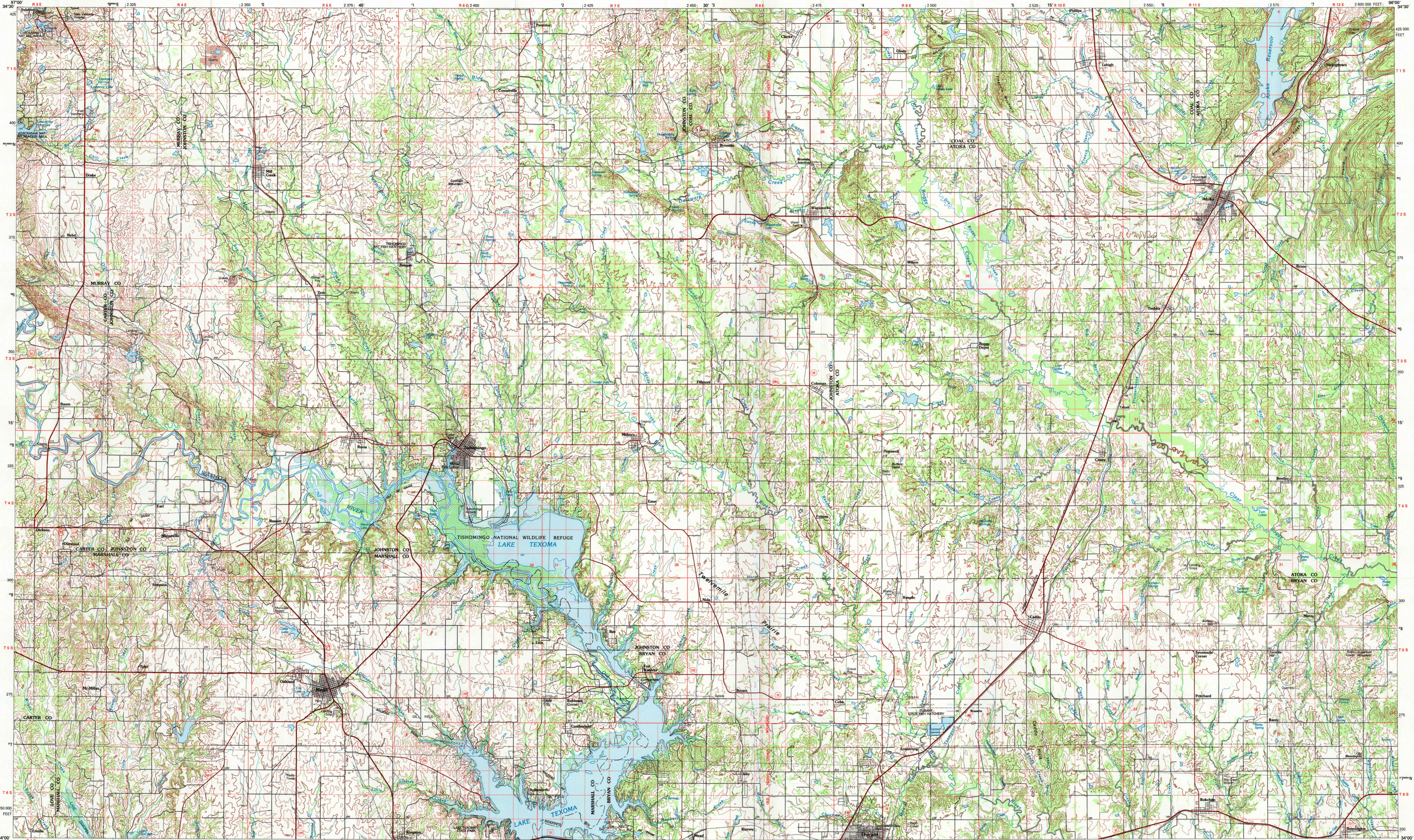
A pamphlet describing topographic maps is available on request



20% RECYCLED PAPER

### TISHOMINGO, OKLAHOMA

30 X 60 MINUTE SERIES (TOPOGRAPHIC)



TISHOMINGO, OKLAHOMA  
34096-A1-TM-100

1985