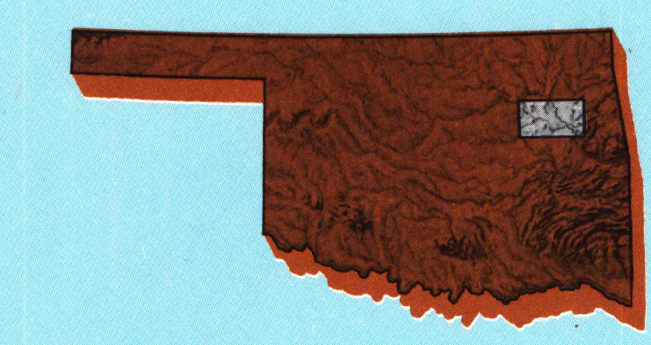


# Tulsa

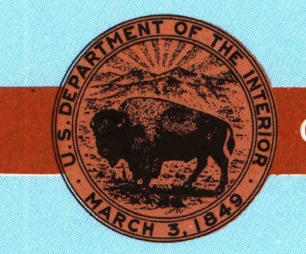
## OKLAHOMA

1:100 000-scale metric  
topographic map



30 X 60 MINUTE QUADRANGLE  
SHOWING

- Contours and elevations in meters
- Highways, roads and other manmade structures
- Water features
- Woodland areas
- Geographic names



GEOLOGICAL SURVEY

1985

Produced by the United States Geological Survey  
Compiled from USGS 1:250,000-scale topographic maps  
dated 1959-1982. Planimetry revised from aerial  
photographs taken 1980 and other source data.  
Revised information not field checked.  
Map edited 1985.  
Projection and 10 000-meter grid, zone 15  
Universal Transverse Mercator  
25 000-foot grid ticks based on Oklahoma coordinate  
system, north zone. 1927 North American Datum  
To place on the predicted North American Datum 1983 move  
the projection lines 4 meters south and 22 meters east.  
There may be private inholdings within the boundaries of  
the National or State reservations shown on this map.

CONTOUR INTERVAL: 10 METERS  
NATIONAL GEODETIC VERTICAL DATUM OF 1929  
ELEVATIONS SHOWN TO THE NEAREST METER

THIS MAP COMPLIES WITH NATIONAL MAP ACCURACY STANDARDS

Meters	Feet
1	3.2808
2	6.5617
3	9.8425
4	13.1234
5	16.4042
6	19.6850
7	22.9659
8	26.2467
9	29.5276
10	32.8084

To convert meters to feet  
multiply by 3.2808  
To convert feet to meters  
multiply by 0.3048

DECLINATION DIAGRAM

ADJOINING MAPS

1	2	3
1 Panhandle	2 Bartlesville	3 Muskogee
4 Bartlesville	5 Muskogee	6 Muskogee
7 Muskogee	8 Muskogee	9 Muskogee
10 Muskogee	11 Muskogee	12 Muskogee

FOR SALE BY U.S. GEOLOGICAL SURVEY, DENVER, COLORADO 80225  
OR RESTON, VIRGINIA 22092

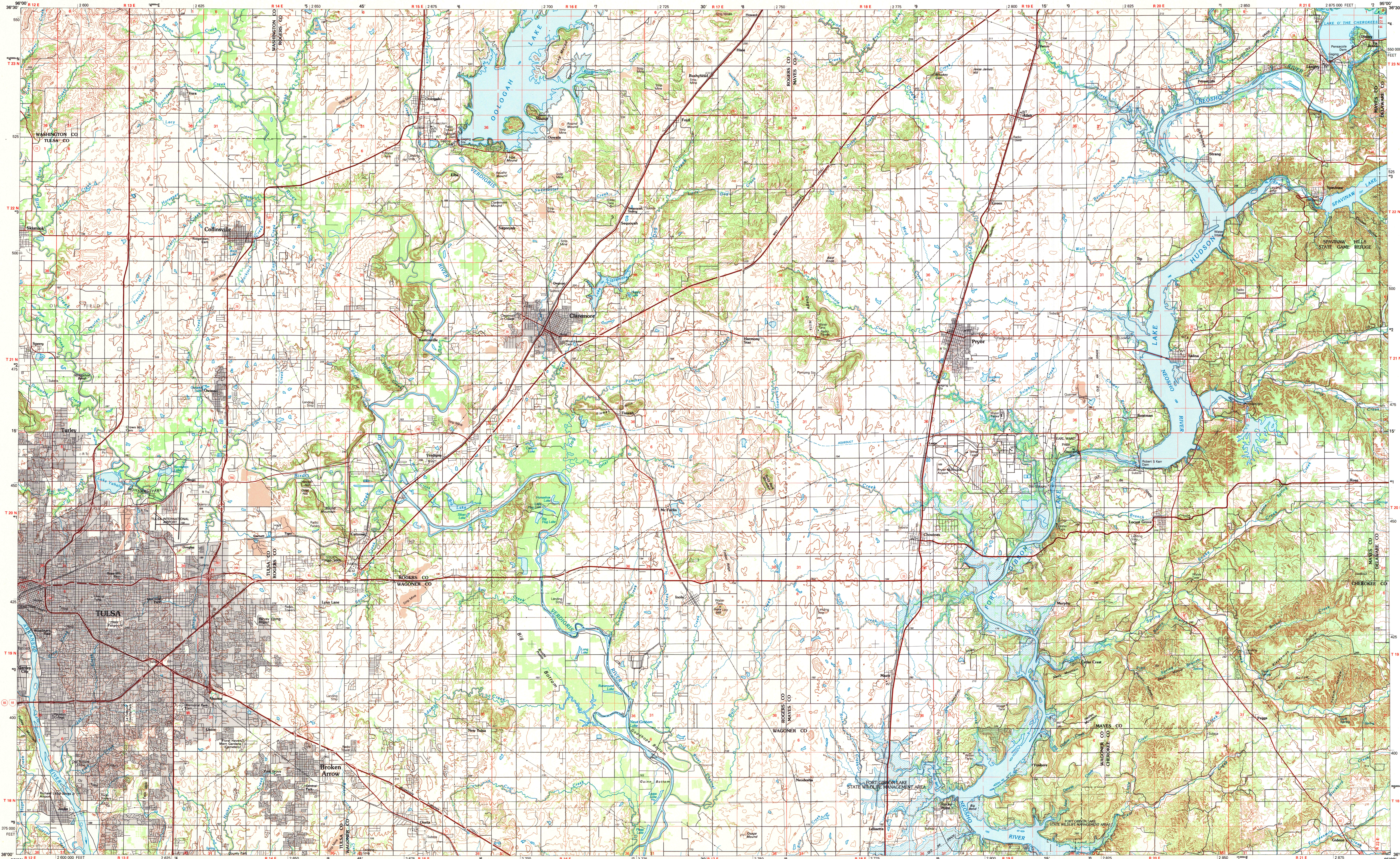
A.H. ROBINSON  
MAP LIBRARY  
OCT 1 5 1990  
U.S. Regional  
Depository Copy  
DO NOT DISCARD  
University of Wisconsin  
Madison

### Topographic Map Symbols

- Primary highway, hard surface
- Secondary highway, hard surface
- Light duty road, principal street, hard or improved surface
- Other road or street, trail
- Road marker: Interstate, U. S. State
- Railroad: standard gauge, narrow gauge
- Bridge: overpass; underpass
- Tunnel: road; railroad
- Built up area; locality; elevation
- Airport: landing field; landing strip
- National boundary
- State boundary
- County boundary
- National or State reservation boundary
- Land grant boundary
- U. S. public lands survey: range, township, section
- Ramp; township; section line: protracted
- Power transmission line; pipeline
- Dam; dam with lock
- Cemetery; building
- Windmill; water well; spring
- Mine shaft; oil or cave; mine, quarry; gravel pit
- Campground; picnic area; U. S. location monument
- Railroad; off-leaving
- Distorted surface: strip mine, levee, sand
- Contours: index; intermediate; supplementary
- Bathymetric contours: index; intermediate
- Stream, lake, perennial; intermittent
- Rapids, large and small; falls, large and small
- Area to be submerged; marsh; swamp
- Land subject to controlled inundation; woodland
- Scrub; mangrove
- Orchard; vineyard

A pamphlet describing topographic maps is available on request

## TULSA, OKLAHOMA



INTERIOR GEOLOGICAL SURVEY, RESTON, VIRGINIA-1985  
KILOMETERS 1 0 1 2 3 4 5 6 7 8 9 10 11 12 13 14 15 16 17 18 19 20  
SCALE 1:100 000  
1 CENTIMETER ON THE MAP REPRESENTS 1 KILOMETER ON THE GROUND  
5000 10000 15000 20 000 METERS  
TULSA, OKLAHOMA  
36095-A1-TM-100