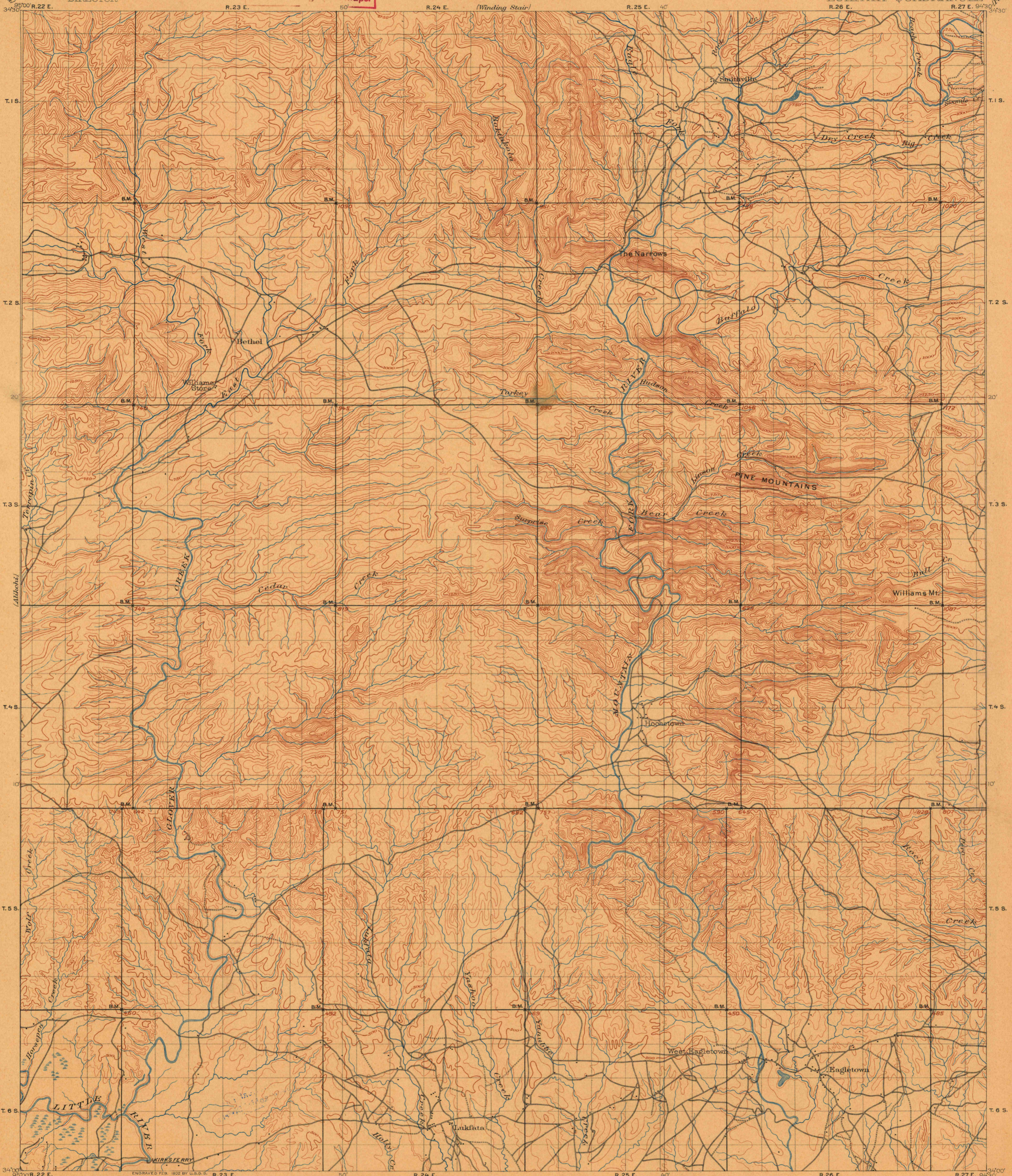


U. S. G. S.  
**FILE COPY**  
Ed. Div. Maps.

U.S. GEOLOGICAL SURVEY  
CHARLES D. WALCOTT  
DIRECTOR

**TOPOGRAPHIC SHEET**

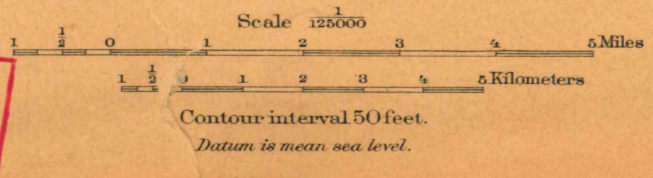
INDIAN TERRITORY  
(CHOCTAW NATION)  
LUKFATA QUADRANGLE



95°00' R. 22 E. 34°30' ENGRAVED FEB. 1922 BY U.S.G.S. R. 23 E. 50' R. 24 E. (Winding Stair) R. 25 E. 40' R. 26 E. R. 27 E. 94°30' 34°30'

C.H. Fitch, Topographer in charge.  
Van H. Manning, Topographer, Assistant in charge.  
Triangulation by C.F. Urquhart.  
Topography by O. Jones, W.S. Post, C.W. Goodlove, W.T. Turner and W.H. Orlin.  
Surveyed in 1886.

U. S. G. S.  
**FILE COPY**  
Ed. Div. Maps.



USGS  
Historical File  
Topographic Division

DIAGRAM OF TOWNSHIP

|    |    |    |    |    |    |
|----|----|----|----|----|----|
| 6  | 5  | 4  | 3  | 2  | 1  |
| 7  | 8  | 9  | 10 | 11 | 12 |
| 13 | 14 | 15 | 16 | 17 | 18 |
| 19 | 20 | 21 | 22 | 23 | 24 |
| 25 | 26 | 27 | 28 | 29 | 30 |
| 31 | 32 | 33 | 34 | 35 | 36 |

LUKFATA  
U.S. Geological Survey  
JUN 30 1902  
Ed. Div. Topographic Maps.