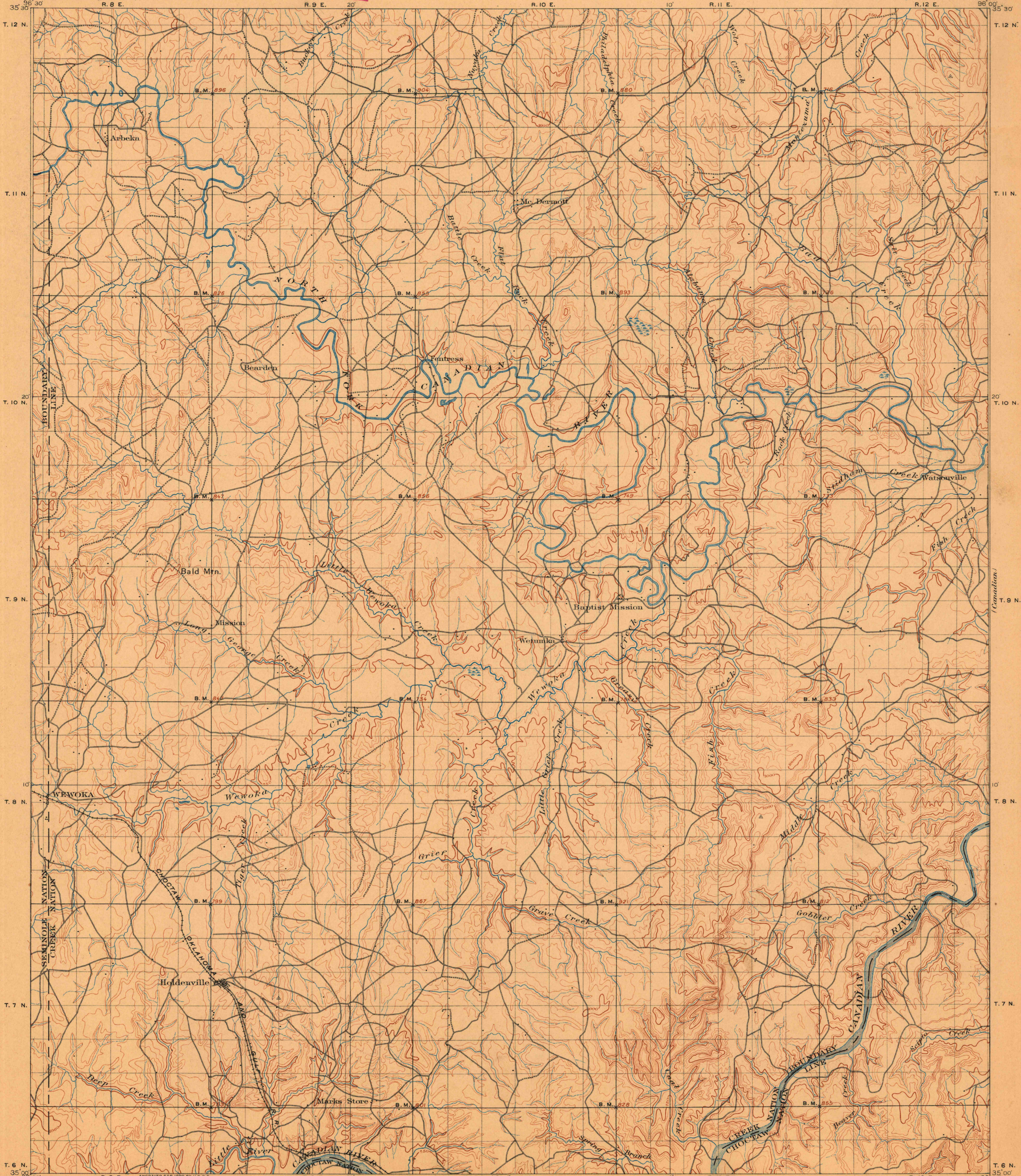


U. S. G. S.  
**FILE COPY**  
Ed. Div. Topographic Maps.

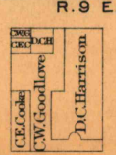
U. S. GEOLOGICAL SURVEY  
CHARLES D. WALCOTT, DIRECTOR

TOPOGRAPHIC SHEET

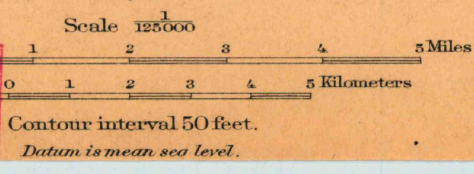
INDIAN TERRITORY  
WEWOKA QUADRANGLE



C.H. Fitch, Topographer in charge.  
Van H. Manning, Topographer, Assistant in charge.  
Triangulation by C.F. Urquhart.  
Topography by D.C. Harrison, C.E. Cooke and C.W. Goodlove.  
Surveyed in 1895-96.



U. S. G. S.  
**FILE COPY**



U.S.G.S.  
Historical File  
Topographic Division

Wawoka, Okla.,  
JAN 31 1901 (2601)  
Ed. Div. Topographic Maps.

(Okmulgee)  
T. 12 N. 35 30'  
T. 11 N.  
T. 10 N. 20'  
T. 9 N.  
T. 8 N. 10'  
T. 7 N.  
T. 6 N. 35 30'  
R. 8 E. 20'  
R. 9 E. 20'  
R. 10 E. 10'  
R. 11 E.  
R. 12 E. 96 00'  
96 30'  
96 00'  
96 30'