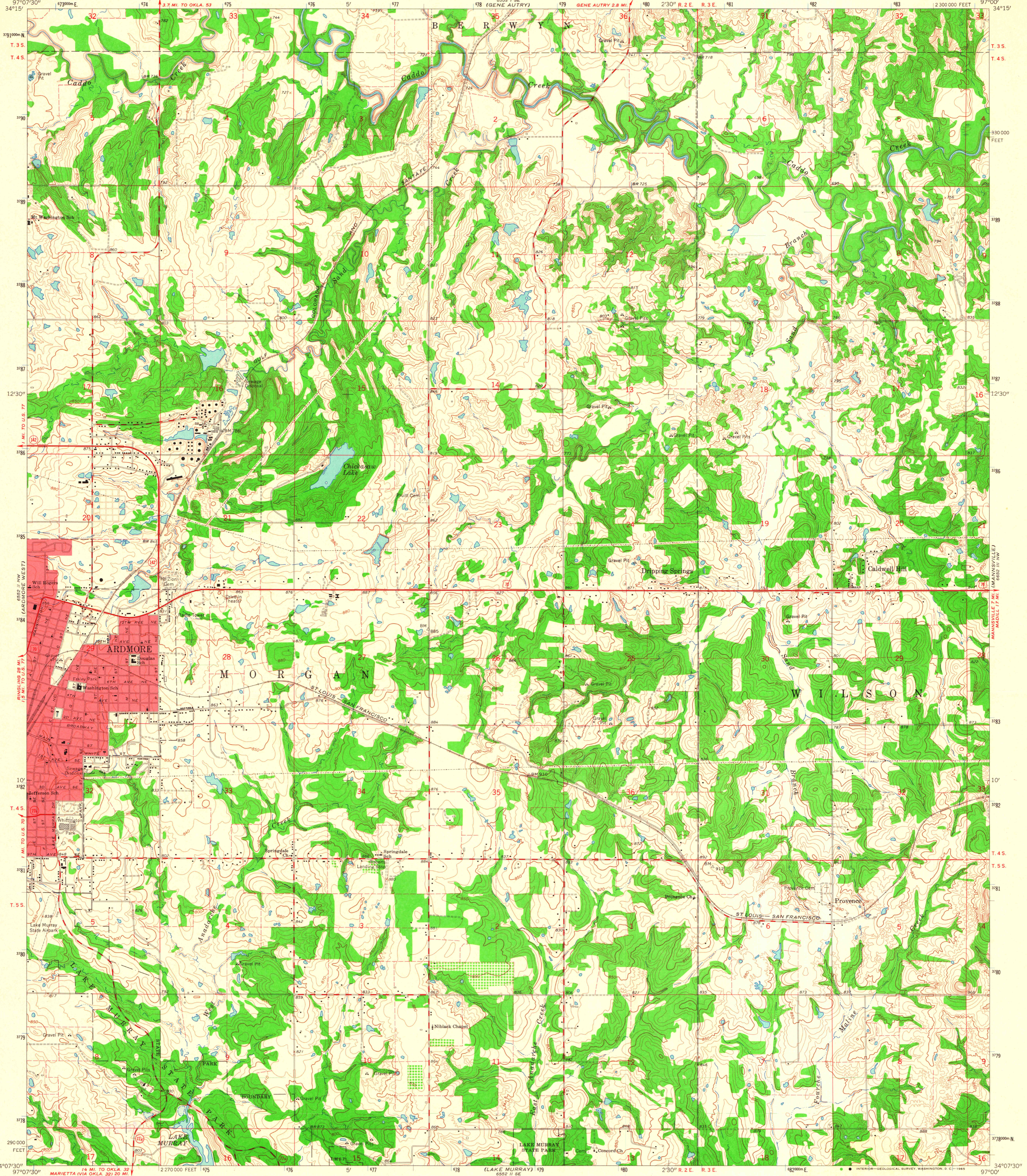
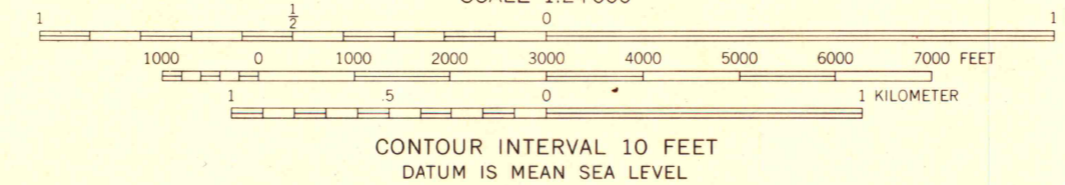
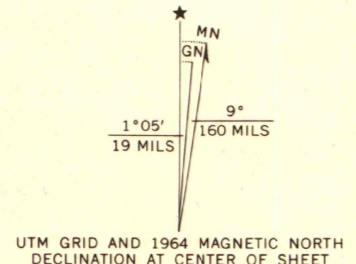


UNITED STATES
DEPARTMENT OF THE INTERIOR
GEOLOGICAL SURVEY

ARDMORE EAST QUADRANGLE
OKLAHOMA—CARTER CO.
7.5 MINUTE SERIES (TOPOGRAPHIC)



Mapped, edited and published by the Geological Survey
Control by USGS, USC&GS, and Oklahoma Geological Survey
Topography by photogrammetric methods from aerial photographs taken 1962. Field checked 1964
Polyconic projection. 1927 North American datum
10,000-foot grid based on Oklahoma coordinate system, south zone
1000-meter Universal Transverse Mercator grid ticks, zone 14, shown in blue
Red tint indicates area in which only landmark buildings are shown
Fine red dashed lines indicate selected fence and field lines where generally visible on aerial photographs. This information is unchecked



ROAD CLASSIFICATION

Heavy-duty	Light-duty
Medium-duty	Unimproved dirt
U.S. Route	State Route

MAP AND AIR PHOTO LIBRARY
University of Wisconsin

THIS MAP COMPLIES WITH NATIONAL MAP ACCURACY STANDARDS
FOR SALE BY U.S. GEOLOGICAL SURVEY, DENVER, COLORADO 80225, OR WASHINGTON, D. C. 20242
A FOLDER DESCRIBING TOPOGRAPHIC MAPS AND SYMBOLS IS AVAILABLE ON REQUEST

ARDMORE EAST, OKLA.
N3407.5—W9700.7.5

1964

AMS 6552 II NE—SERIES V883