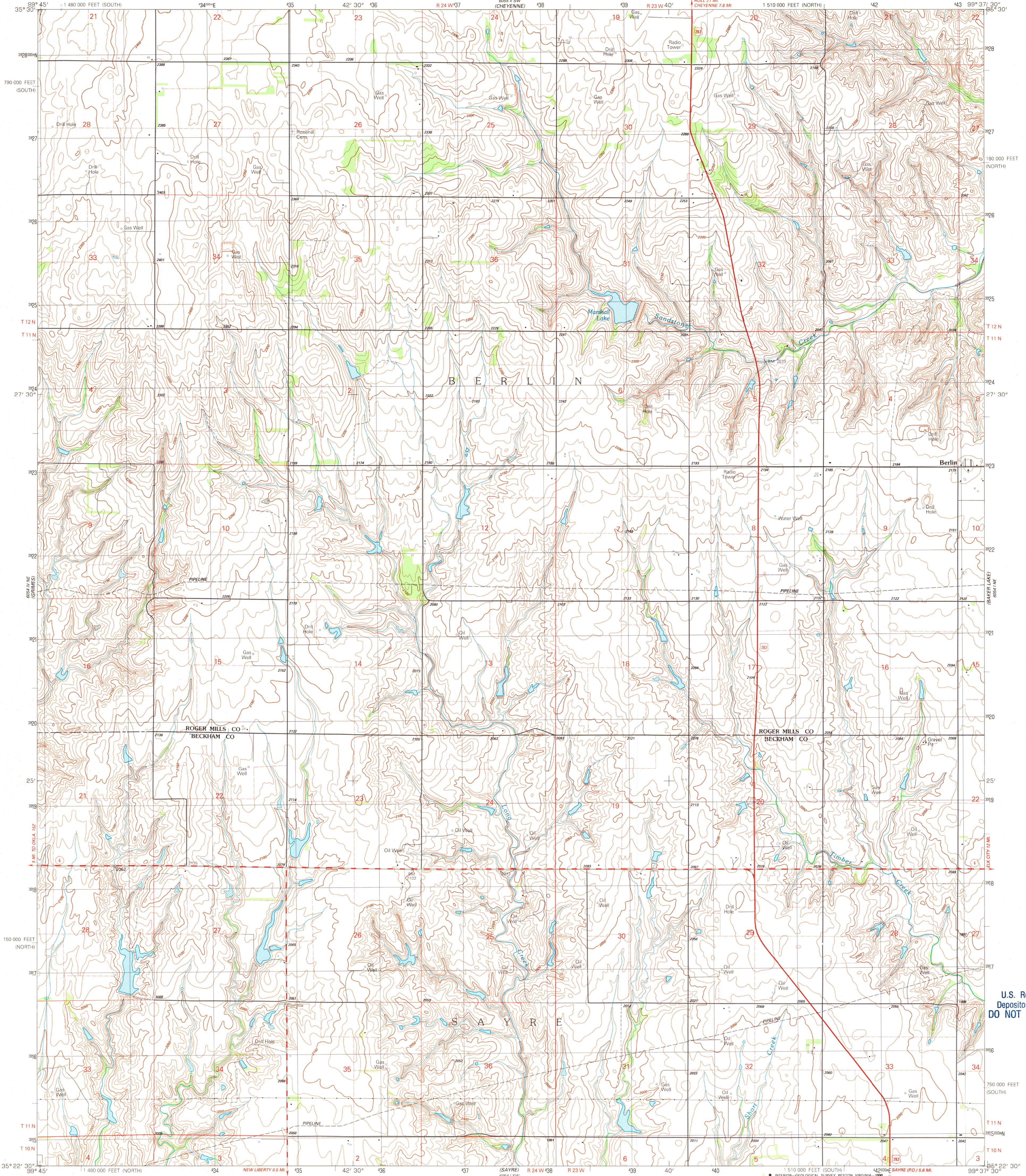
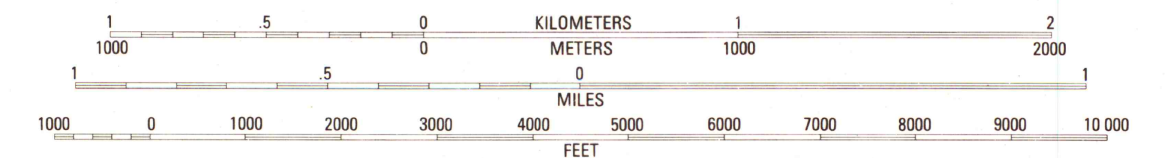
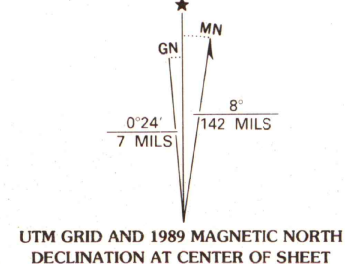


UNITED STATES
DEPARTMENT OF THE INTERIOR
GEOLOGICAL SURVEY

BERLIN QUADRANGLE
OKLAHOMA
7.5 MINUTE SERIES (TOPOGRAPHIC)
NW 4 SAYRE 15' QUADRANGLE



Produced by the United States Geological Survey
Control by USGS and NOS/NOAA
Topography by photogrammetric methods from aerial photographs taken 1958. Revised from aerial photographs taken 1984.
Field checked 1988. Map edited 1989.
Projection and 10,000-foot grid ticks: Oklahoma coordinate system, north and south zones (Lambert conformal conic) 1000-meter Universal Transverse Mercator grid, zone 14 1927 North American Datum
To place on the predicted North American Datum 1983, move the projection lines 2 meters south and 34 meters east as shown by dashed corner ticks
Fine red dashed lines indicate selected fence and field lines where generally visible on aerial photographs. This information is unchecked



SCALE 1:24 000

CONTOUR INTERVAL 10 FEET
NATIONAL GEODETIC VERTICAL DATUM OF 1929

THIS MAP COMPLIES WITH NATIONAL MAP ACCURACY STANDARDS
FOR SALE BY U.S. GEOLOGICAL SURVEY, DENVER, COLORADO 80225, OR RESTON, VIRGINIA 22092
AND OKLAHOMA GEOLOGICAL SURVEY, NORMAN, OKLAHOMA 73069
A FOLDER DESCRIBING TOPOGRAPHIC MAPS AND SYMBOLS IS AVAILABLE ON REQUEST

ROAD CLASSIFICATION
Primary highway, Light-duty road, hard or improved surface
Secondary highway, hard surface
Unimproved road
Interstate Route U.S. Route State Route



U.S. Regional
Depository Copy
DO NOT DISCARD

A.H. ROBINSON
MAP LIBRARY
MAY 31 1990
University of Wisconsin
Madison

BERLIN, OKLA.
NW 4 SAYRE 15' QUADRANGLE
35099-D6-TF-024
1989

DMA 6054 1 NW - SERIES 5883