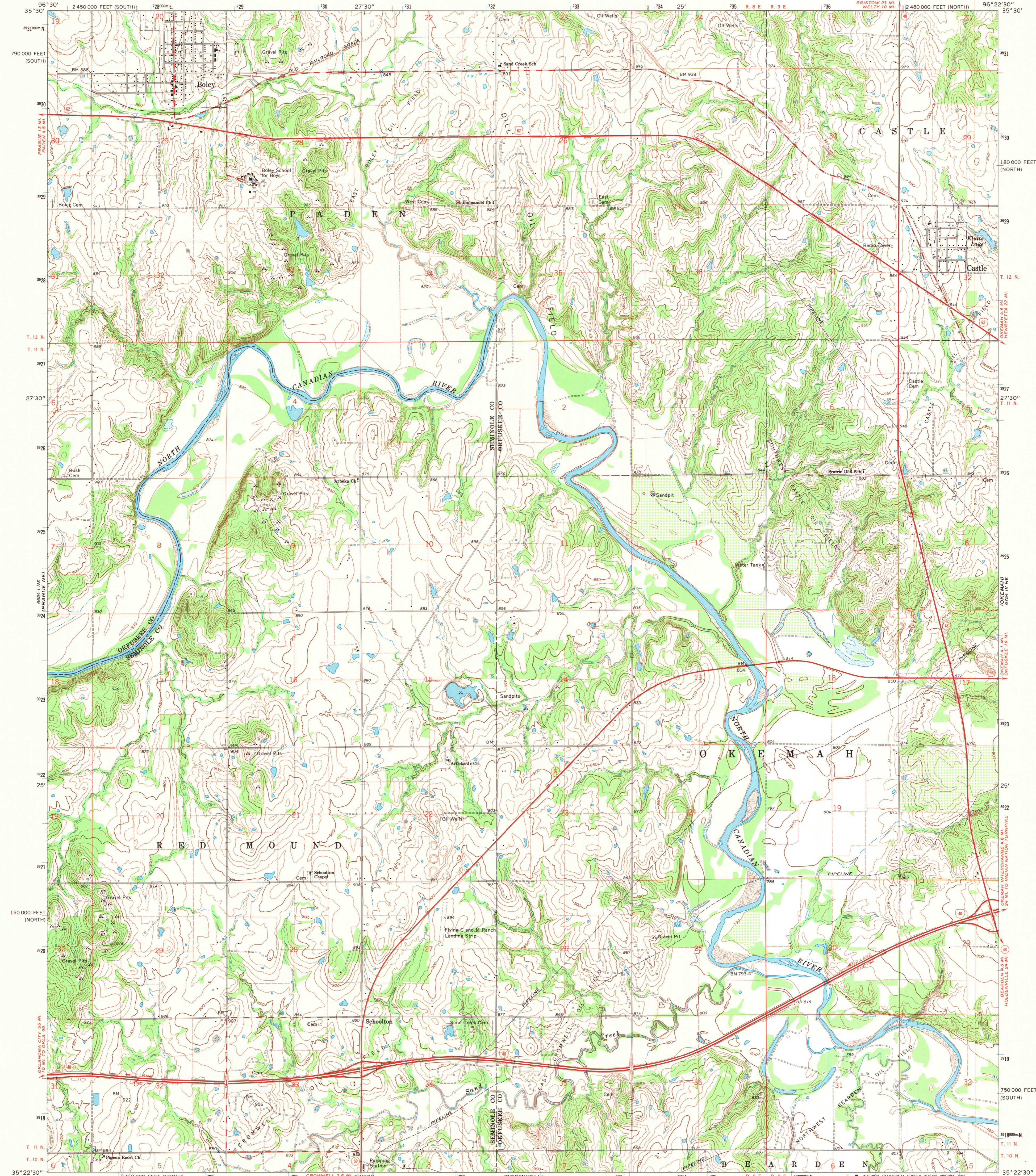


UNITED STATES  
DEPARTMENT OF THE INTERIOR  
GEOLOGICAL SURVEY

BOLEY QUADRANGLE  
OKLAHOMA  
7.5 MINUTE SERIES (TOPOGRAPHIC)



Mapped, edited, and published by the Geological Survey

Control by USGS, USC&GS, and Oklahoma Highway Department

Topography by photogrammetric methods from aerial photographs taken 1964. Field checked 1967

Polyconic projection. 1927 North American datum

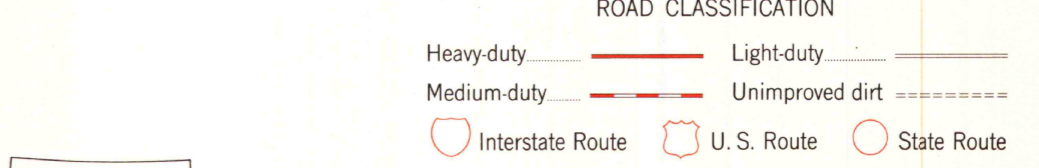
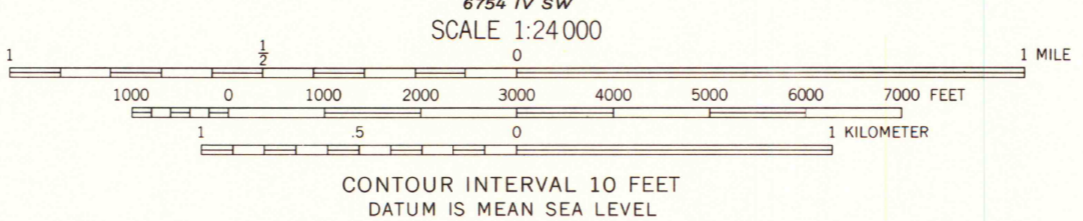
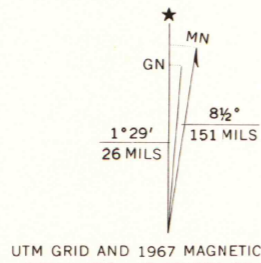
10,000-foot grids based on Oklahoma coordinate system, north and south zones

1000-meter Universal Transverse Mercator grid ticks, zone 14, shown in blue

Fine red dashed lines indicate selected fence and field lines where generally visible on aerial photographs. This information is unchecked

Map photinspected 1976

No major culture or drainage changes observed



THIS MAP COMPLIES WITH NATIONAL MAP ACCURACY STANDARDS

FOR SALE BY U.S. GEOLOGICAL SURVEY, DENVER, COLORADO 80225, OR RESTON, VIRGINIA 22092

AND OKLAHOMA GEOLOGICAL SURVEY, NORMAN, OKLAHOMA 73089

A FOLDER DESCRIBING TOPOGRAPHIC MAPS AND SYMBOLS IS AVAILABLE ON REQUEST

U.S. Regional  
Photocopy  
1:24,000

BOLEY, OKLA.  
N 3522.5—W 9622.5/7.5

1967  
PHOTOINSPECTED 1976  
AMS 6754 IV NW—SERIES V883

University of Wisconsin  
Map Library  
OCT 10 1991  
A.H. JOHNSON  
MAP LIBRARY