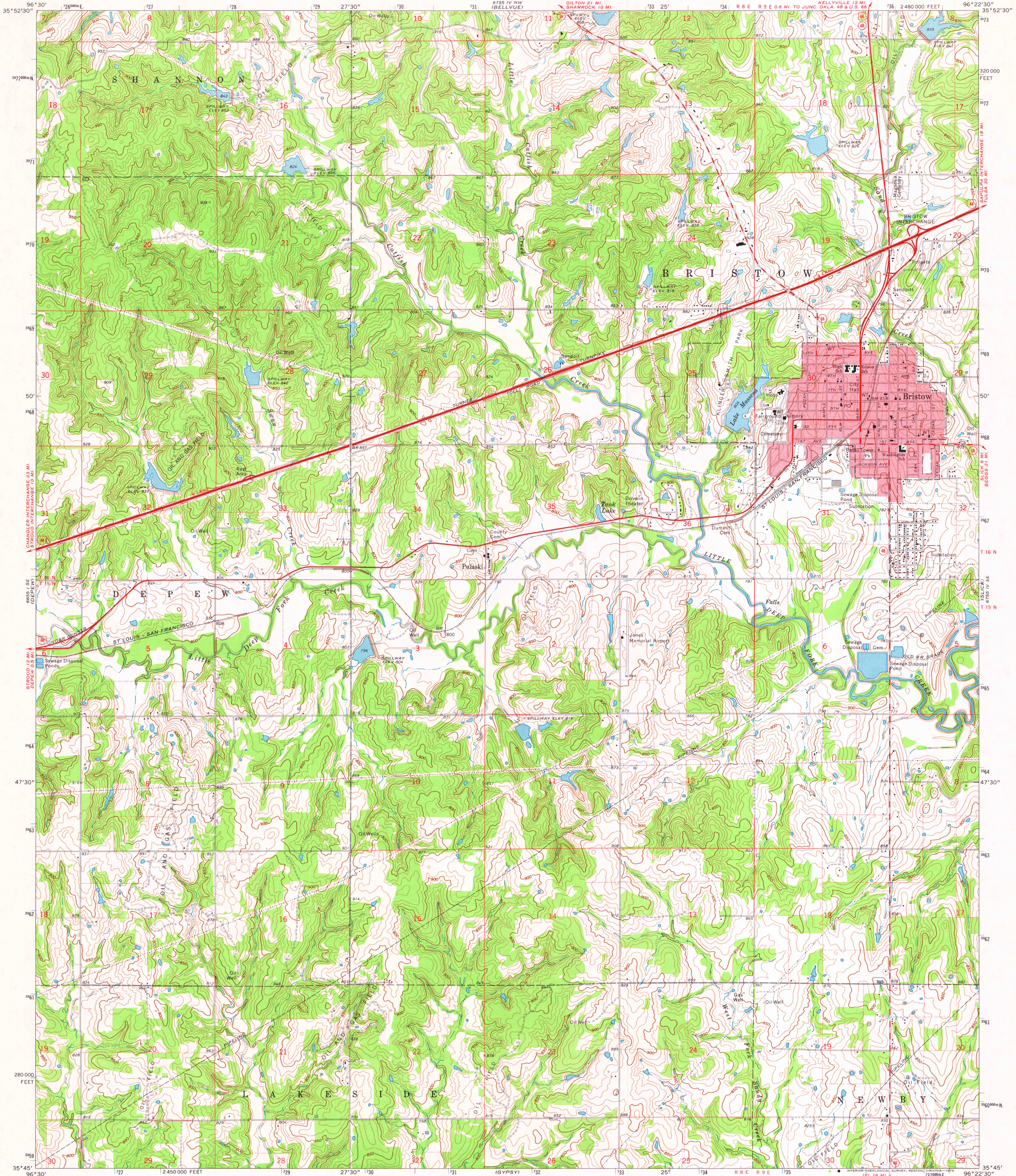


UNITED STATES  
DEPARTMENT OF THE INTERIOR  
GEOLOGICAL SURVEY

BRISTOW QUADRANGLE  
OKLAHOMA—CREEK CO.  
7.5 MINUTE SERIES (TOPOGRAPHIC)  
SW 4 BRISTOW 15' QUADRANGLE



Mapped, edited, and published by the Geological Survey

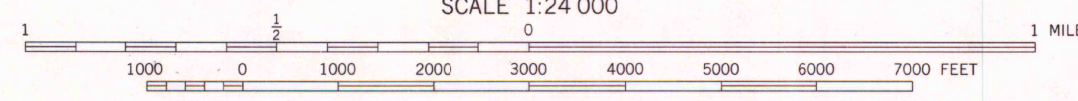
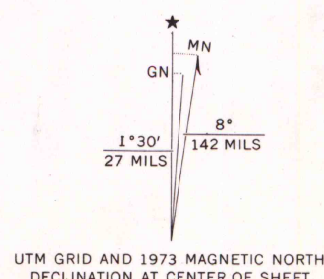
Control by USGS and NOS/NOAA

Topography by photogrammetric methods from aerial photographs taken 1972. Field checked 1973

Projection and 10,000-foot grid ticks: Oklahoma coordinate system, north zone (Lambert conformal conic)  
1000-metre Universal Transverse Mercator grid ticks, zone 14, shown in blue. 1927 North American datum

Red tint indicates area in which only landmark buildings are shown

Fine red dashed lines indicate selected fence and field lines where generally visible on aerial photographs. This information is unchecked



CONTOUR INTERVAL 10 FEET  
NATIONAL GEODETIC VERTICAL DATUM OF 1929

THIS MAP COMPLIES WITH NATIONAL MAP ACCURACY STANDARDS  
FOR SALE BY U. S. GEOLOGICAL SURVEY, DENVER, COLORADO 80225, OR RESTON, VIRGINIA 22092  
AND BY THE OKLAHOMA GEOLOGICAL SURVEY, NORMAN, OKLAHOMA 73069  
A FOLDER DESCRIBING TOPOGRAPHIC MAPS AND SYMBOLS IS AVAILABLE ON REQUEST



MAP AND AIR PHOTO  
COPY

APR 24 1976

University of Wisconsin

BRISTOW, OKLA.

SW 4 BRISTOW 15' QUADRANGLE

N 3545—W 9622 S 7.5

1973

AMS 6755 IV SW—SERIES V883