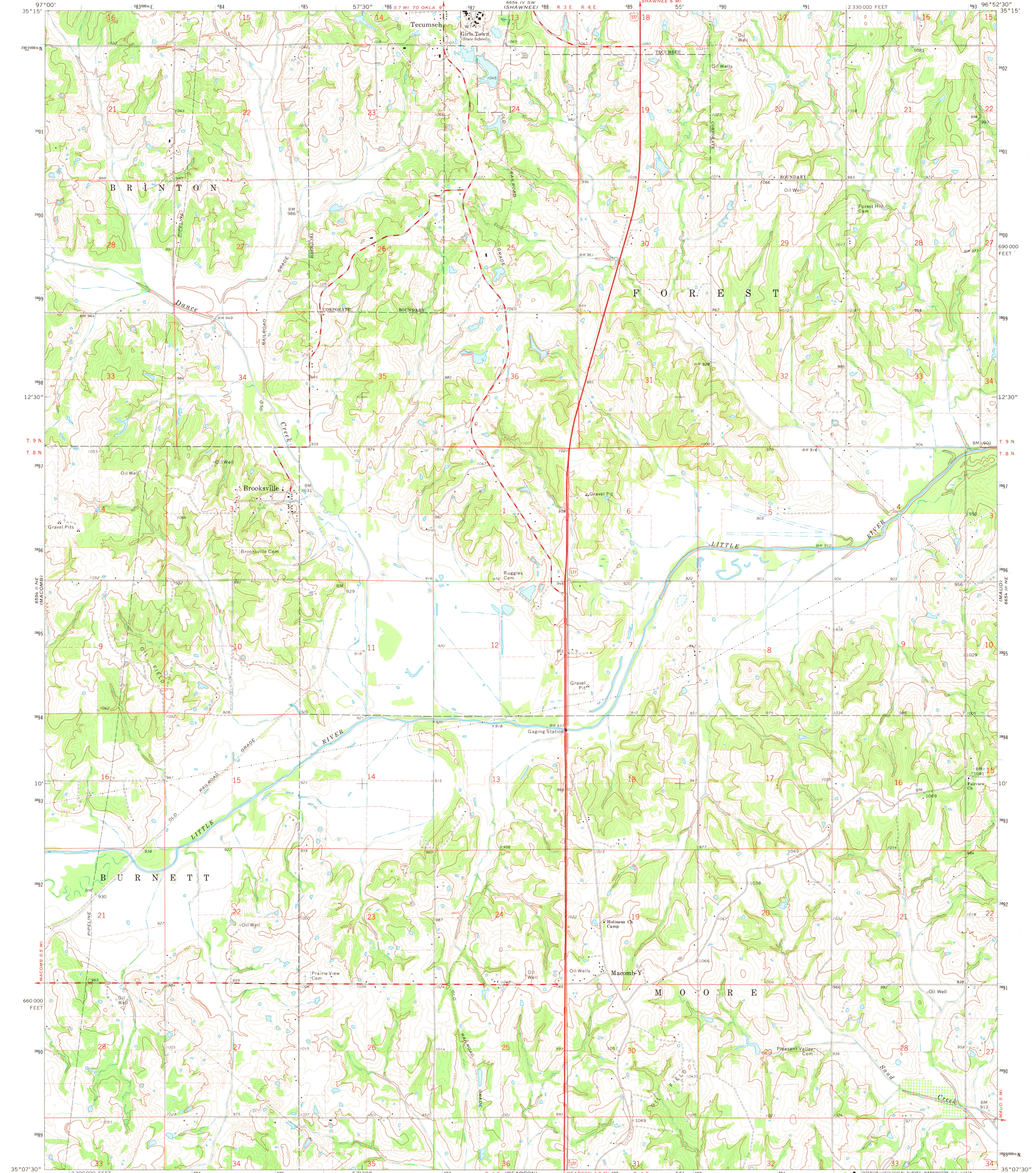
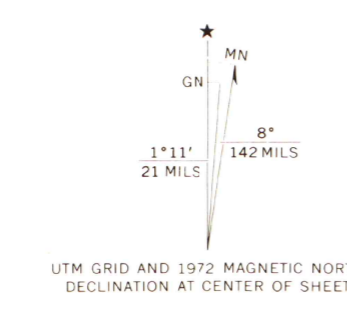


6564 I NE
SHAWNEE
RESERVOIR

6564 IV SE
PEARSON
RESERVOIR



Mapped, edited, and published by the Geological Survey
Control by USGS and USC&GS
Topography by photogrammetric methods from aerial
photographs taken 1971. Field checked 1972
Polyconic projection. 1927 North American datum
10,000-foot grid based on Oklahoma coordinate system, south zone
1000-meter Universal Transverse Mercator grid ticks,
zone 14, shown in blue
Fine red dashed lines indicate selected fence and field lines where
generally visible on aerial photographs. This information is unchecked



SCALE 1:24 000
CONTOUR INTERVAL 10 FEET
DATUM IS MEAN SEA LEVEL

ROAD CLASSIFICATION
Primary highway, hard surface
Secondary highway, hard surface
Light-duty road, hard or improved surface
Unimproved road
Interstate Route
U. S. Route
State Route

THIS MAP COMPLIES WITH NATIONAL MAP ACCURACY STANDARDS
FOR SALE BY U. S. GEOLOGICAL SURVEY, DENVER, COLORADO 80225, OR WASHINGTON, D. C. 20242
AND BY THE OKLAHOMA GEOLOGICAL SURVEY, NORMAN, OKLAHOMA 73069
A FOLDER DESCRIBING TOPOGRAPHIC MAPS AND SYMBOLS IS AVAILABLE ON REQUEST



MAP AND AIR PHOTO
LIBRARY
MUN 2 8 1974
University of Wisconsin

BROOKVILLE, OKLA.
NW/4 MAUD 15' QUADRANGLE
N3507.5—W9652.5/7.5

1972
AMS 6654 III NW—SERIES V883