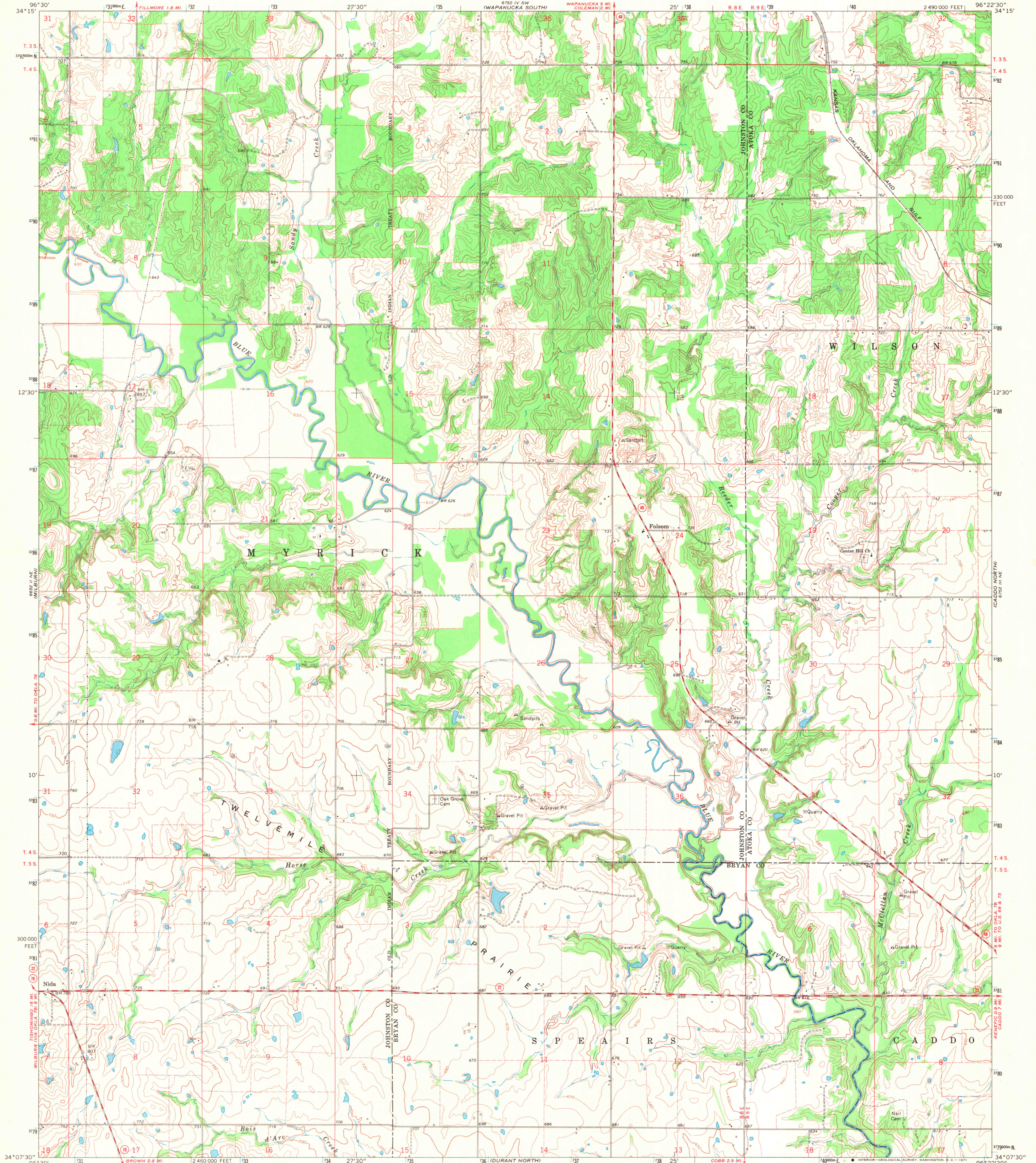


662 1/4 SE
CONVERSEVILLE SE

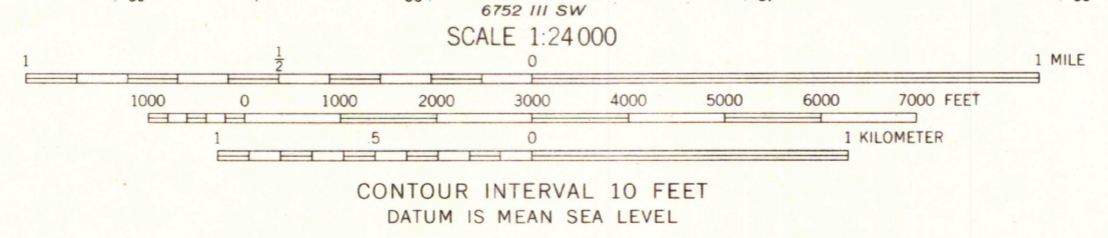
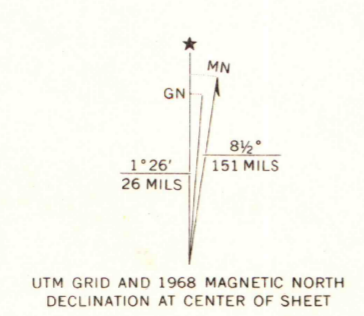
672 1/4 SE
BOBBY DEPOT

UNITED STATES
DEPARTMENT OF THE INTERIOR
GEOLOGICAL SURVEY

CADDO NW QUADRANGLE
OKLAHOMA
7.5 MINUTE SERIES (TOPOGRAPHIC)



Mapped, edited, and published by the Geological Survey
Control by USGS and USC&GS
Topography by photogrammetric methods from aerial
photographs taken 1966. Field checked 1968
Polyconic projection. 1927 North American datum
10,000-foot grid based on Oklahoma coordinate system, south zone
1000-meter Universal Transverse Mercator grid ticks,
zone 14, shown in blue
Fine red dashed lines indicate selected fence and field lines where
generally visible on aerial photographs. This information is unchecked



JUN 1 1971
University of Wisconsin
ROAD CLASSIFICATION
Secondary highway, all weather, Light-duty road, all weather,
hard surface, improved surface
Unimproved road, fair or dry
weather
State Route

THIS MAP COMPLIES WITH NATIONAL MAP ACCURACY STANDARDS
FOR SALE BY U. S. GEOLOGICAL SURVEY, DENVER, COLORADO 80225, OR WASHINGTON, D. C. 20242
AND BY THE OKLAHOMA GEOLOGICAL SURVEY, NORMAN, OKLAHOMA 73069
A FOLDER DESCRIBING TOPOGRAPHIC MAPS AND SYMBOLS IS AVAILABLE ON REQUEST

CADDO NW, OKLA.
N3407.5—W9622.5/7.5
1968
AMS 6752 III NW—SERIES V883

LITTLE CITY
662 1/4 SE

CADDO SOUTH
672 1/4 SE