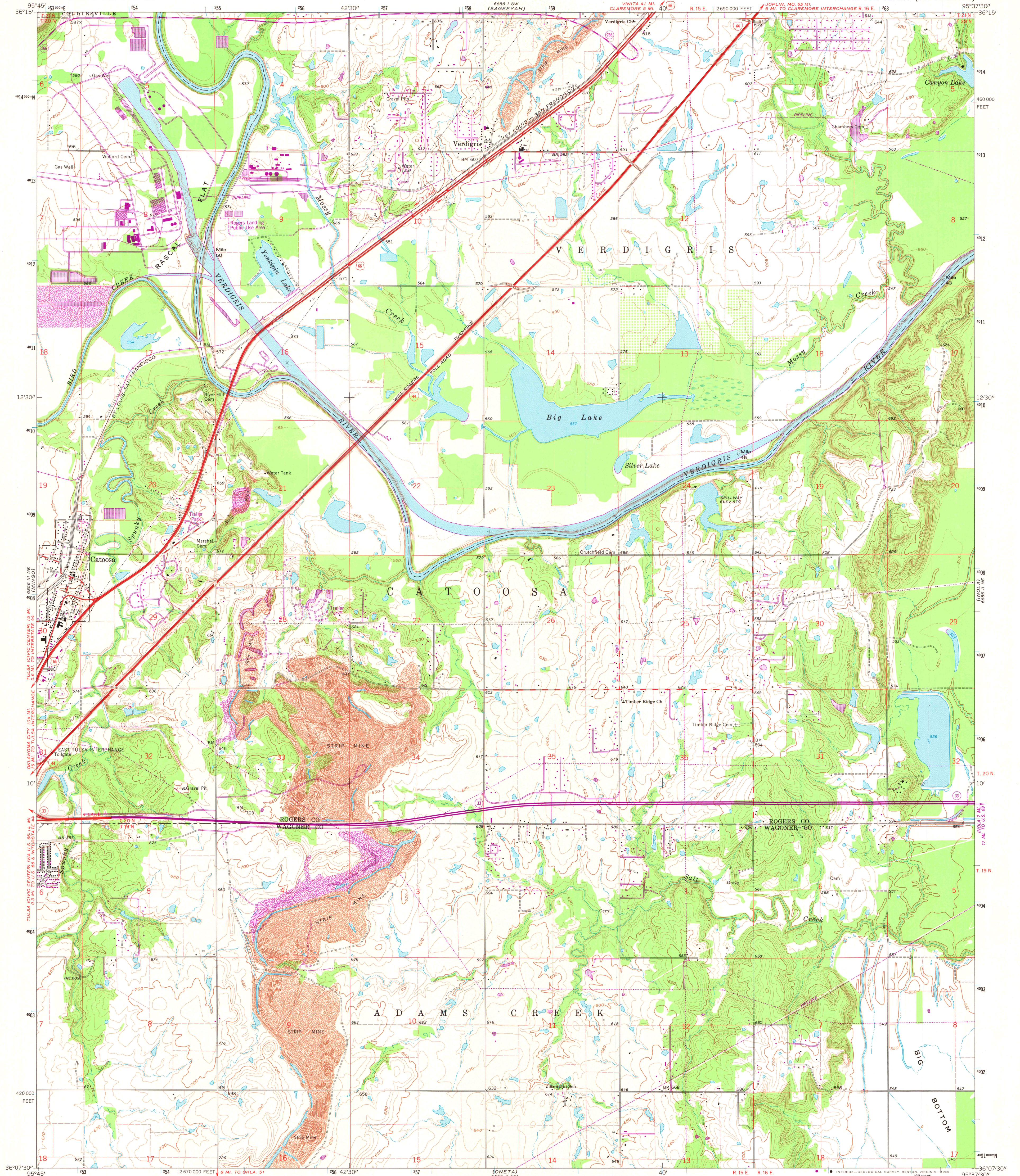


UNITED STATES  
DEPARTMENT OF THE INTERIOR  
GEOLOGICAL SURVEY

CATOOSA QUADRANGLE  
OKLAHOMA  
7.5 MINUTE SERIES (TOPOGRAPHIC)



Mapped, edited, and published by the Geological Survey  
in cooperation with Tulsa Chamber of Commerce  
Control by USGS, USC&GS, and Oklahoma Geological Survey  
Topography by photogrammetric methods from aerial  
photographs taken 1962. Field checked 1963  
Polyconic projection. 1927 North American datum  
10,000-foot grids based on Oklahoma coordinate system, north zone  
1000-meter Universal Transverse Mercator grid ticks,  
zone 15, shown in blue  
Fine red dashed lines indicate selected fence and field lines where  
generally visible on aerial photographs. This information is unchecked  
To place on the predicted North American Datum 1983  
move the projection lines 4 meters south and  
23 meters east as shown by dashed corner ticks  
Revisions shown in purple compiled from aerial photographs taken  
1978. Map edited 1980. This information not field checked

