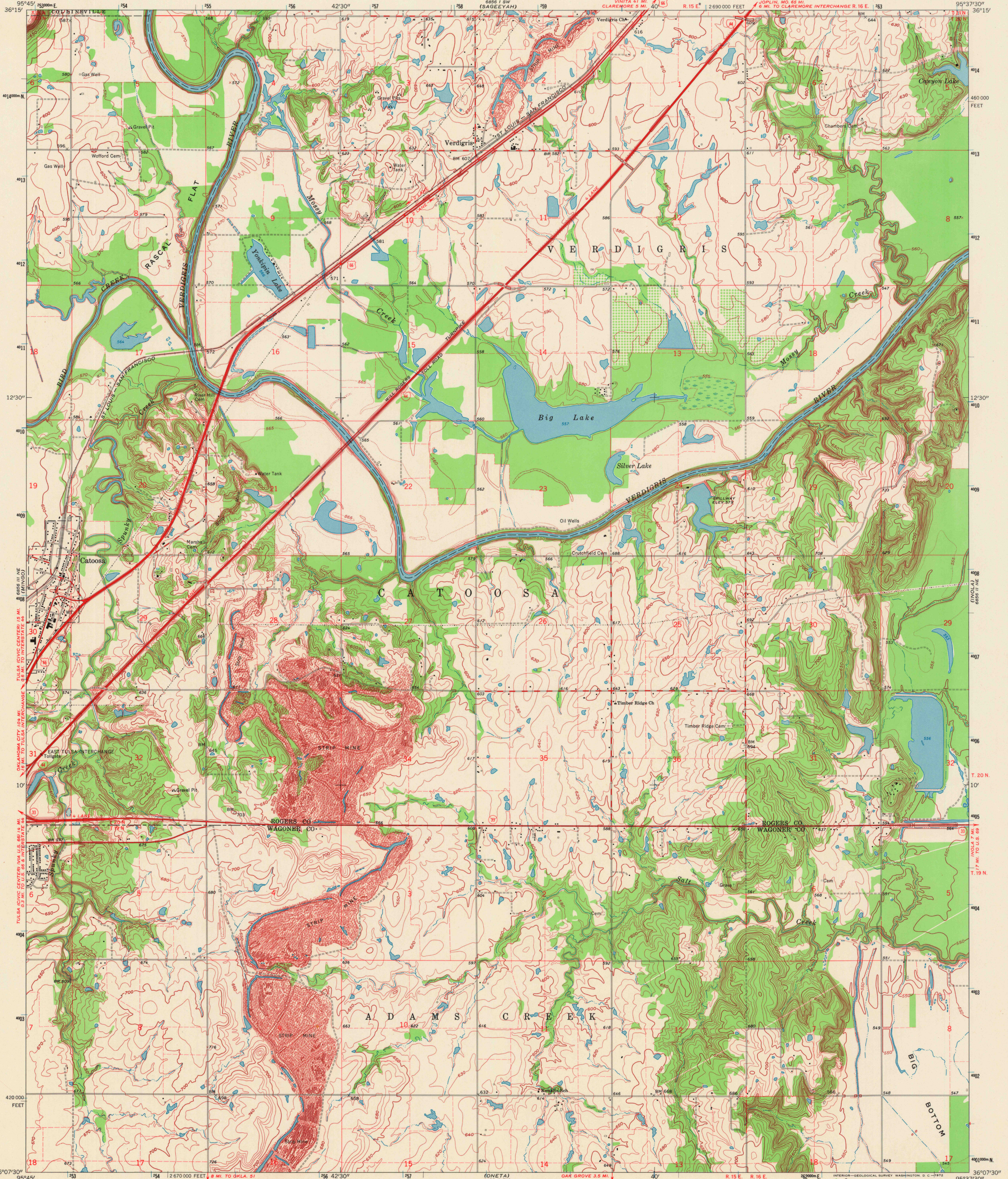
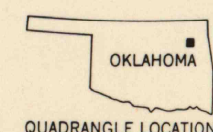
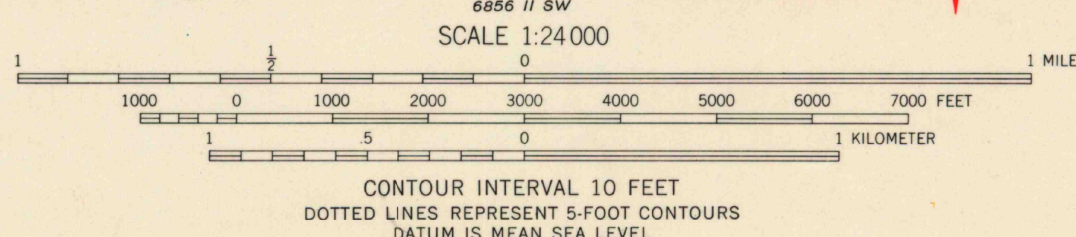
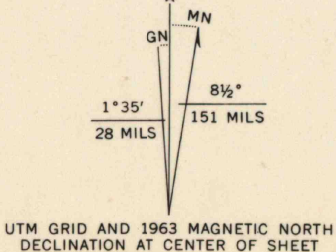


UNITED STATES
DEPARTMENT OF THE INTERIOR
GEOLOGICAL SURVEY

CATOOSA QUADRANGLE
OKLAHOMA
7.5 MINUTE SERIES (TOPOGRAPHIC)



Mapped, edited, and published by the Geological Survey
in cooperation with Tulsa Chamber of Commerce
Control by USGS, USC&S, and Oklahoma Geological Survey
Topography by photogrammetric methods from aerial
photographs taken 1962. Field checked 1963
Polyconic projection. 1927 North American datum
10,000-foot grids based on Oklahoma coordinate system, north zone
1000-meter Universal Transverse Mercator grid ticks,
zone 15, shown in blue
Fine red dashed lines indicate selected fence and field lines where
generally visible on aerial photographs. This information is unchecked



ROAD CLASSIFICATION
Heavy-duty ——— Light-duty ———
Medium-duty ——— Unimproved dirt ———
Interstate Route U.S. Route State Route

USGS
HISTORICAL FILE
TOPOGRAPHIC DIVISION

CATOOSA, OKLA.
N3607.5—W9537.5/7.5

1963
AMS 6856 II NW—SERIES V883

SEP 22 1972