

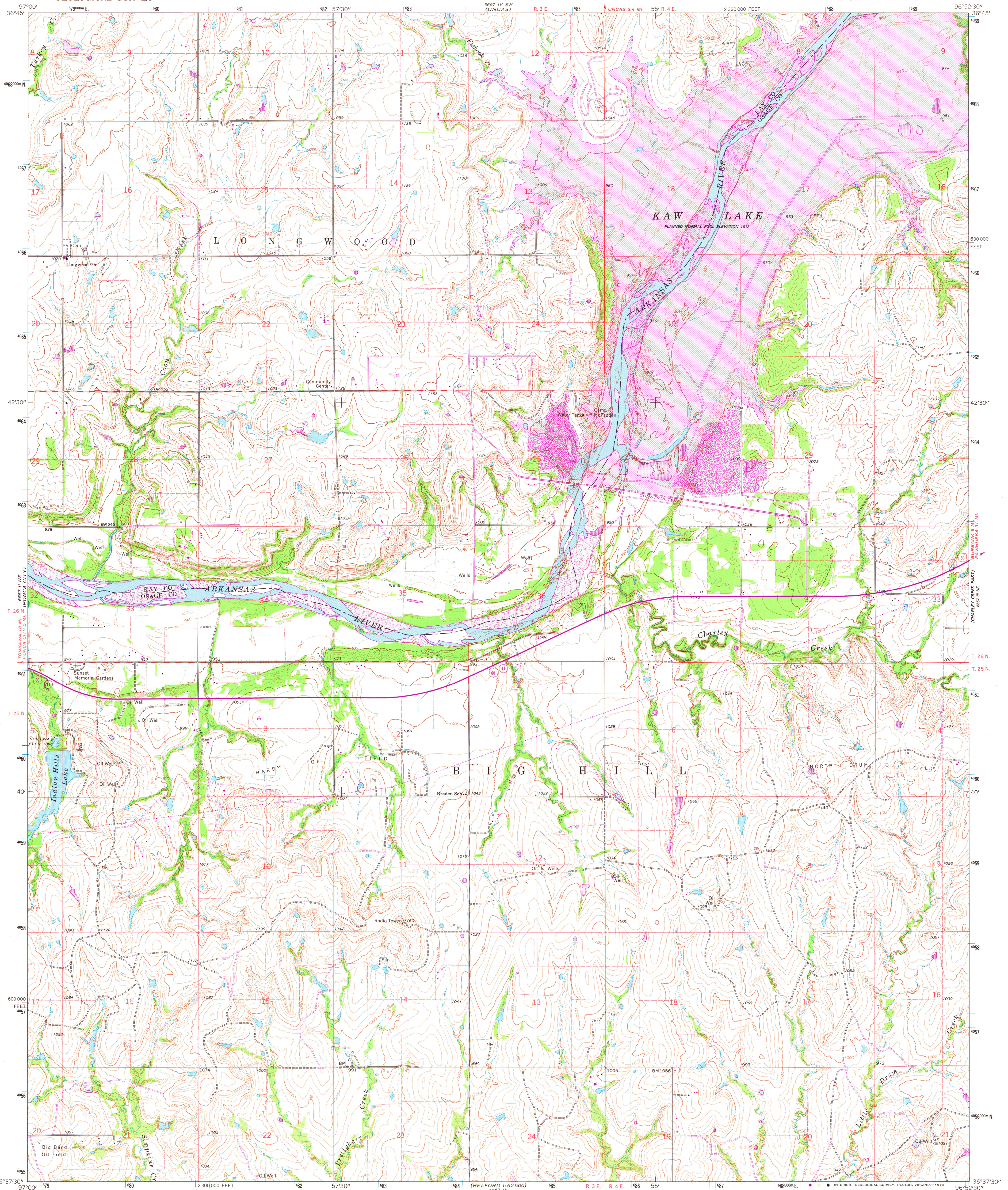
6557 145  
WILDAES

UNITED STATES  
DEPARTMENT OF THE INTERIOR  
GEOLOGICAL SURVEY

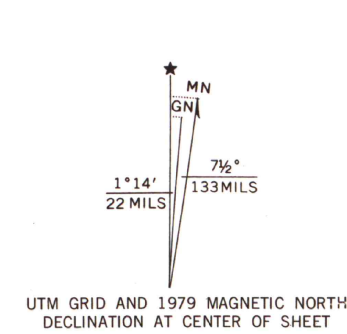


CHARLEY CREEK WEST QUADRANGLE  
OKLAHOMA  
7.5 MINUTE SERIES (TOPOGRAPHIC)

6557 145  
WILDAES



Maped, edited, and published by the Geological Survey  
Control by USGS, USC&GS and USCE  
Topography by photogrammetric methods from aerial  
photographs taken 1963. Field checked 1963  
Polyconic projection. 1927 North American datum  
10,000-foot grid based on Oklahoma coordinate system, north zone  
1000-metre Universal Transverse Mercator grid ticks,  
zone 14, shown in blue  
Fine red dashed lines indicate selected fence and field lines where  
generally visible on aerial photographs. This information is unchecked  
Revisions shown in purple and woodland compiled from  
aerial photographs taken 1976 and other source data  
This information not field checked. Map edited 1979  
Purple hatching indicates areas to be submerged



SCALE 1:24 000  
1 000 2000 3000 4000 5000 6000 7000 FEET  
1 KILOMETRE  
CONTOUR INTERVAL 10 FEET  
DOTTED LINES REPRESENT 5-FOOT CONTOURS  
NATIONAL GEODETIC VERTICAL DATUM OF 1929  
THIS MAP COMPLIES WITH NATIONAL MAP ACCURACY STANDARDS  
FOR SALE BY U. S. GEOLOGICAL SURVEY, DENVER, COLORADO 80225, OR RESTON, VIRGINIA 22092  
AND BY THE OKLAHOMA GEOLOGICAL SURVEY, NORMAN, OKLAHOMA 73069  
A FOLDER DESCRIBING TOPOGRAPHIC MAPS AND SYMBOLS IS AVAILABLE ON REQUEST



ROAD CLASSIFICATION  
Primary highway, all weather, hard surface  
Secondary highway, all weather, hard surface  
Light-duty road, all weather, improved surface  
Unimproved road, fair or dry weather  
Interstate Route  
U. S. Route  
State Route

CHARLEY CREEK WEST, OKLA. MAP AND AIR PHOTO LIBRARY  
(FORMERLY CHARLEY CREEK)  
NW 1/4 BELFORD 15' QUADRANGLE  
N3637.5-W9652.5/7.5  
1963  
PHOTOREVISED 1979  
AMS 6557 III NW-SERIES V883  
FEB 20 1980  
University of Wisconsin  
Madison