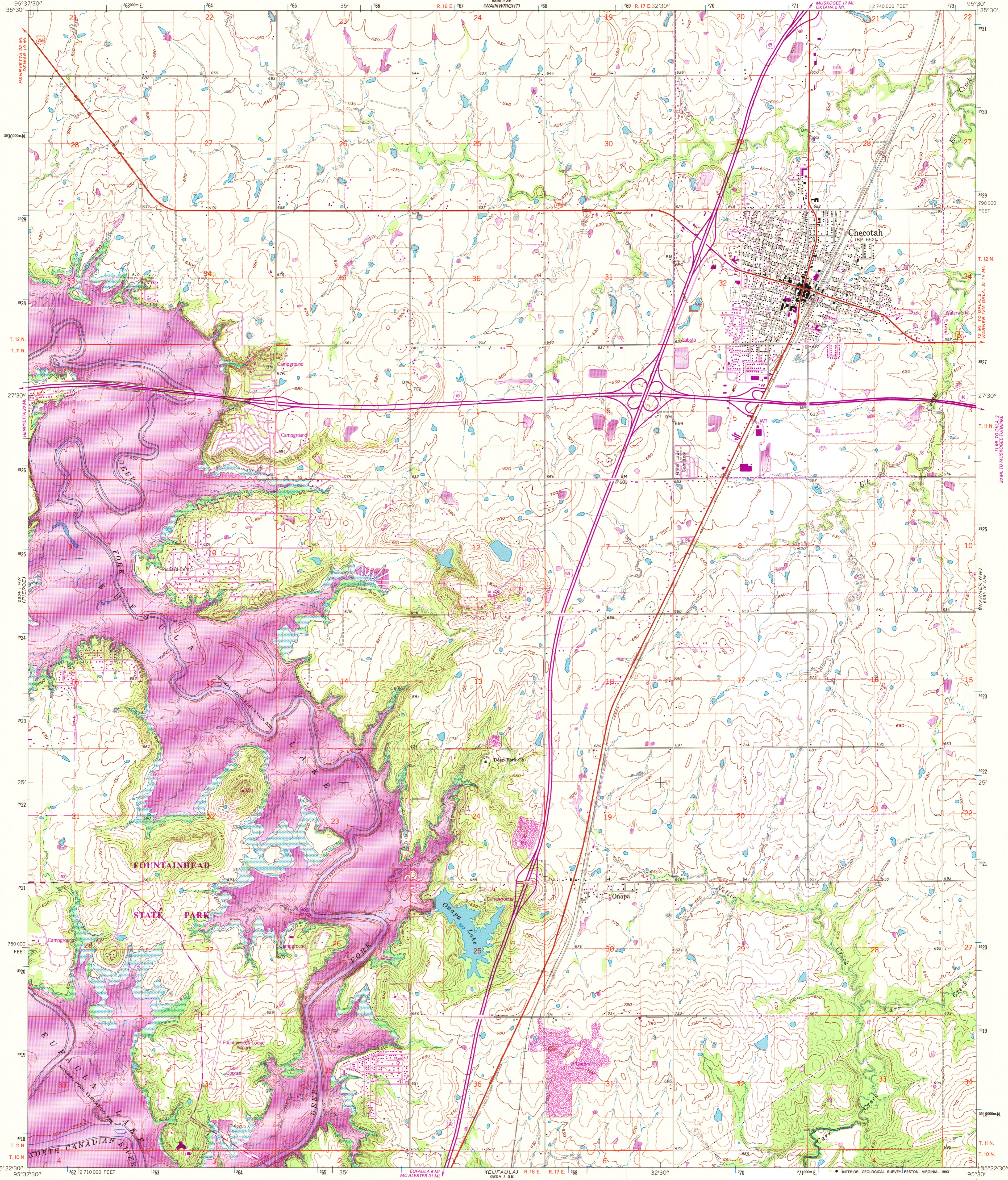
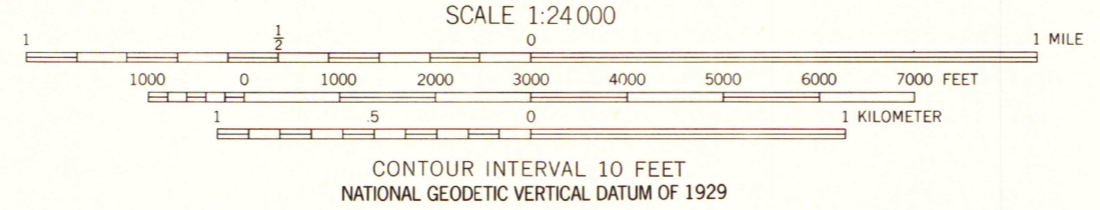
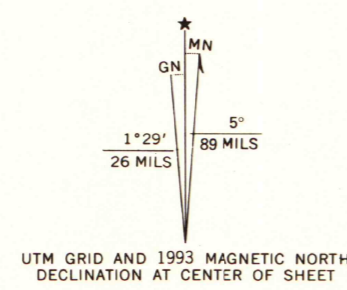


UNITED STATES  
DEPARTMENT OF THE INTERIOR  
GEOLOGICAL SURVEY

CHECOTAH QUADRANGLE  
OKLAHOMA—MCINTOSH CO.  
7.5 MINUTE SERIES (TOPOGRAPHIC)



Produced by the United States Geological Survey  
Control by USGS, NGS/NOKA and Oklahoma Highway Department  
Topography by photogrammetric methods from aerial photographs  
taken 1959. Field checked 1963.  
Projection and 10,000-foot grid ticks: Oklahoma coordinate  
system, south zone (Lambert conformal conic)  
1000-meter Universal Transverse Mercator grid ticks, zone 15, shown in blue  
1927 North American Datum (NAD 27)  
North American Datum of 1983 (NAD 83) is shown by dashed corner ticks  
The values of the shift between NAD 27 and NAD 83 for 7.5-minute  
intersections are given in USGS Bulletin 1875  
There may be private inholdings within the boundaries of  
the National or State reservations shown on this map  
Areas covered by dashed, light-blue pattern  
are subject to controlled inundation  
Fine red dashed lines indicate selected fence and field lines where  
generally visible on aerial photographs. This information is unchecked



ARTHUR H. ROBINSON MAP LIBRARY  
University of Wisconsin-Madison

JAN 18 1994

ROAD CLASSIFICATION

Primary highway, hard surface	Light-duty road, hard or improved surface
Secondary highway, hard surface	Unimproved road
Interstate Route	U. S. Route
	State Route

THIS MAP COMPLIES WITH NATIONAL MAP ACCURACY STANDARDS  
FOR SALE BY U. S. GEOLOGICAL SURVEY, DENVER, COLORADO 80225, OR RESTON, VIRGINIA 22092  
A FOLDER DESCRIBING TOPOGRAPHIC MAPS AND SYMBOLS IS AVAILABLE ON REQUEST

Revisions shown in purple compiled from aerial photographs  
taken in 1991 and other sources. This information not  
field checked. Map edited 1993

CHECOTAH, OKLA.  
35095-D5-TF-024

1963  
REVISED 1993  
DMA 6854 1 NE-SERIES V883

U.S. Regional  
Depository Copy  
DO NOT DISCARD