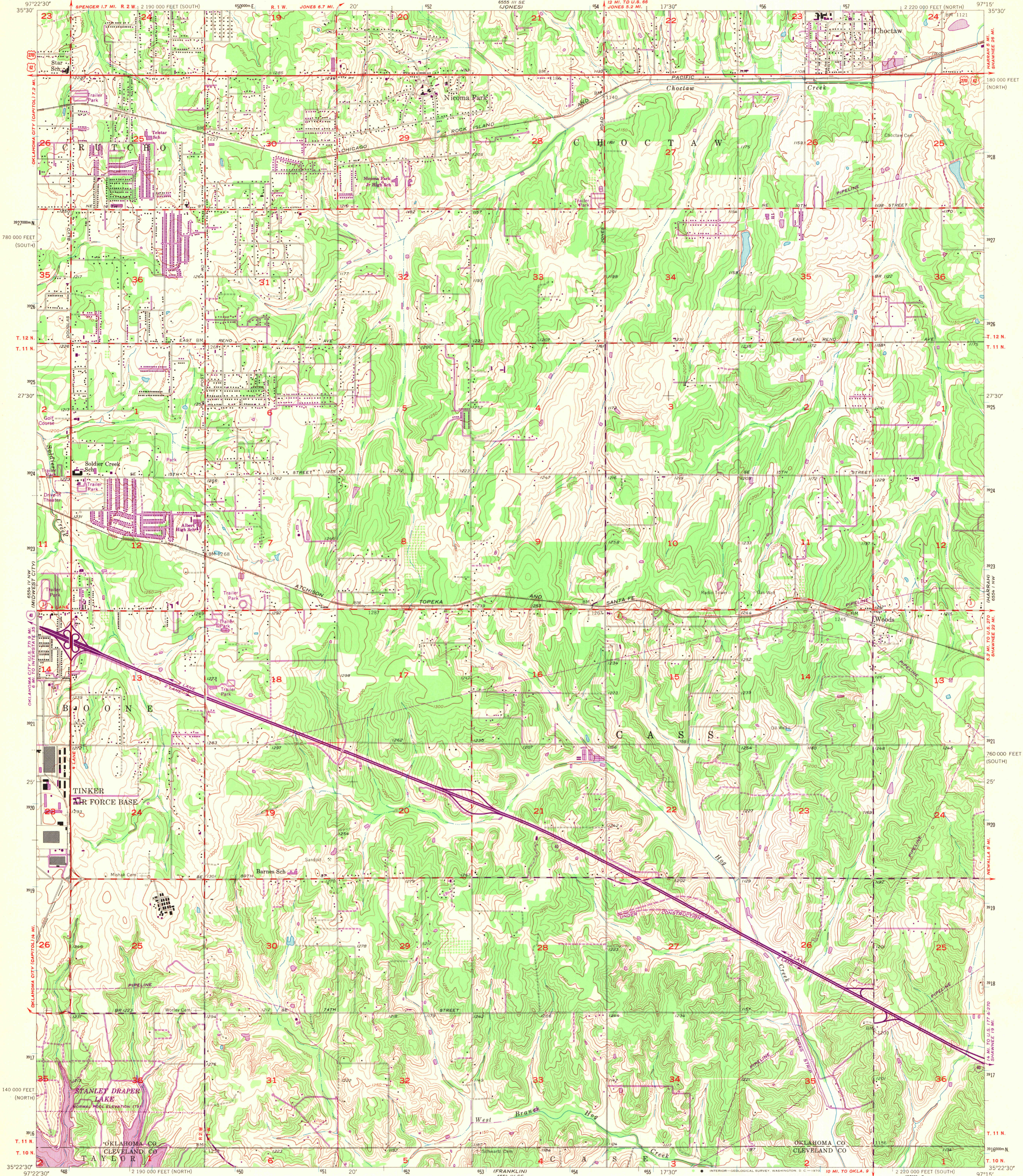
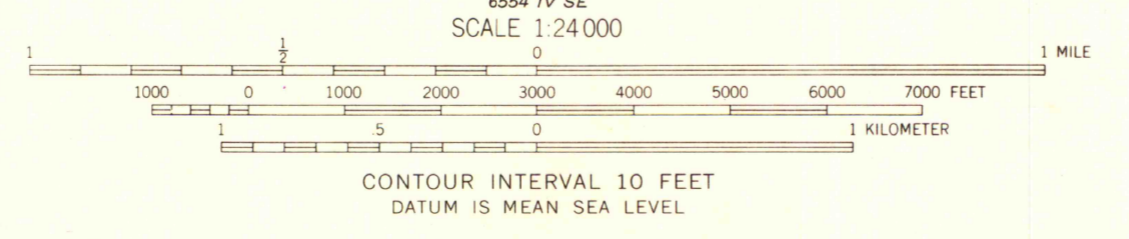
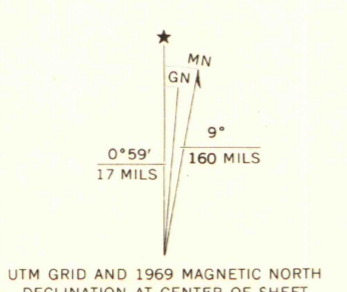


UNITED STATES  
DEPARTMENT OF THE INTERIOR  
GEOLOGICAL SURVEY

CHOCTAW QUADRANGLE  
OKLAHOMA  
7.5 MINUTE SERIES (TOPOGRAPHIC)  
NE/4 MOORE 15' QUADRANGLE



Mapped, edited, and published by the Geological Survey  
Control by USGS, USC&GS, and Oklahoma Geodetic Survey  
Topography from aerial photographs by photogrammetric methods  
and by planetable surveys 1956. Aerial photographs taken 1954  
Polyconic projection. 1927 North American datum  
10,000-foot grids based on Oklahoma coordinate system,  
north and south zones  
1000-meter Universal Transverse Mercator grid ticks,  
zone 14, shown in blue  
Revisions shown in purple and recompilation of woodland areas  
compiled from aerial photographs taken 1969. This information  
not field checked



MAP AND AIR PHOTO LIBRARY  
QUADRANGLE LOCATION  
JAN 20 1971  
University of Wisconsin

ROAD CLASSIFICATION

Heavy-duty	Light-duty
Medium-duty	Unimproved dirt
U.S. Route	State Route
Interstate Route	

CHOCTAW, OKLA.  
NE/4 MOORE 15' QUADRANGLE  
N3522.5'-W9715.75'  
1956  
PHOTOREVISED 1969  
AMS 6554 IV NE—SERIES V883