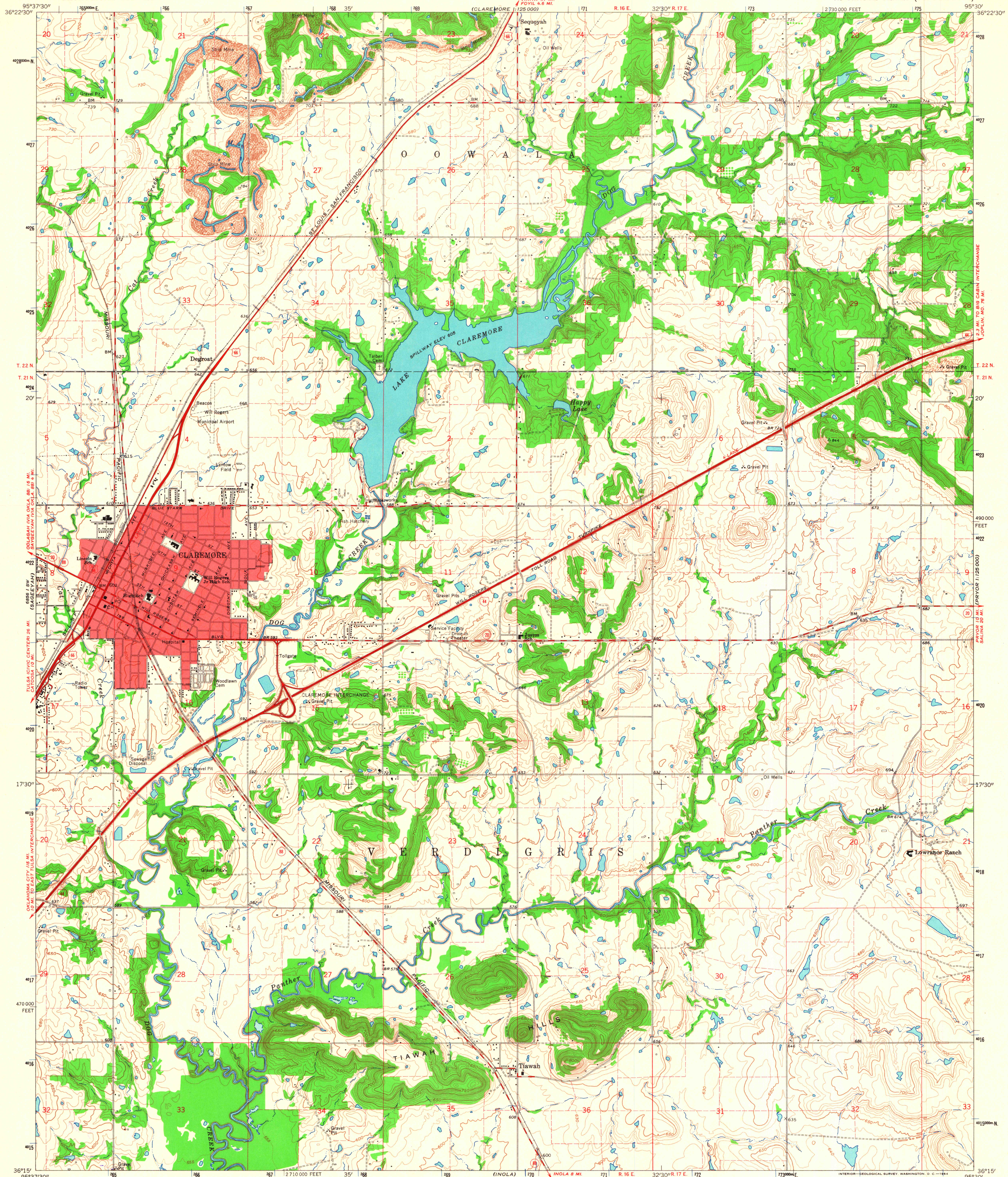


CLAREMORE  
1:125,000

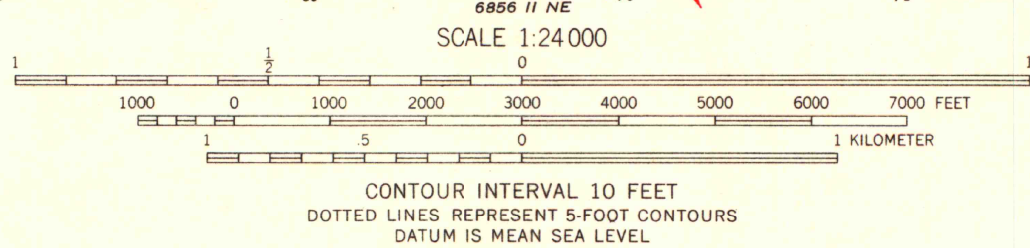
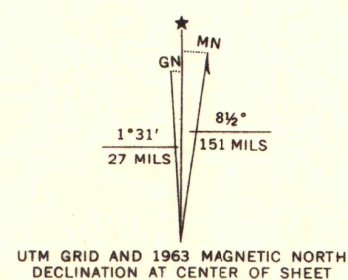
UNITED STATES  
DEPARTMENT OF THE INTERIOR  
GEOLOGICAL SURVEY

CLAREMORE QUADRANGLE  
OKLAHOMA—ROGERS CO.  
7.5 MINUTE SERIES (TOPOGRAPHIC)

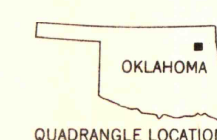
(PREVIOUS 1:125,000)



Maped, edited, and published by the Geological Survey  
in cooperation with Tulsa Chamber of Commerce  
Control by USGS and USC&GS  
Topography by photogrammetric methods from aerial  
photographs taken 1962. Field checked 1963  
Polyconic projection. 1927 North American datum  
10,000-foot grid based on Oklahoma coordinate system, north zone  
1000-meter Universal Transverse Mercator grid ticks,  
zone 15, shown in blue  
Red tint indicates area in which only landmark buildings are shown  
Fine red dashed lines indicate selected fence and field lines where  
generally visible on aerial photographs. This information is unchecked



THIS MAP COMPLIES WITH NATIONAL MAP ACCURACY STANDARDS  
FOR SALE BY U. S. GEOLOGICAL SURVEY, DENVER 25, COLORADO OR WASHINGTON 25, D. C.  
A FOLDER DESCRIBING TOPOGRAPHIC MAPS AND SYMBOLS IS AVAILABLE ON REQUEST



ROAD CLASSIFICATION	
Heavy-duty	Light-duty
Medium-duty	Unimproved dirt
Interstate Route	U. S. Route
	State Route

CLAREMORE, OKLA.  
N3615—W9530/7.5

1963

AMS 6856 1 SE—SERIES V883

University of Wisconsin

(PREVIOUS 1:125,000)