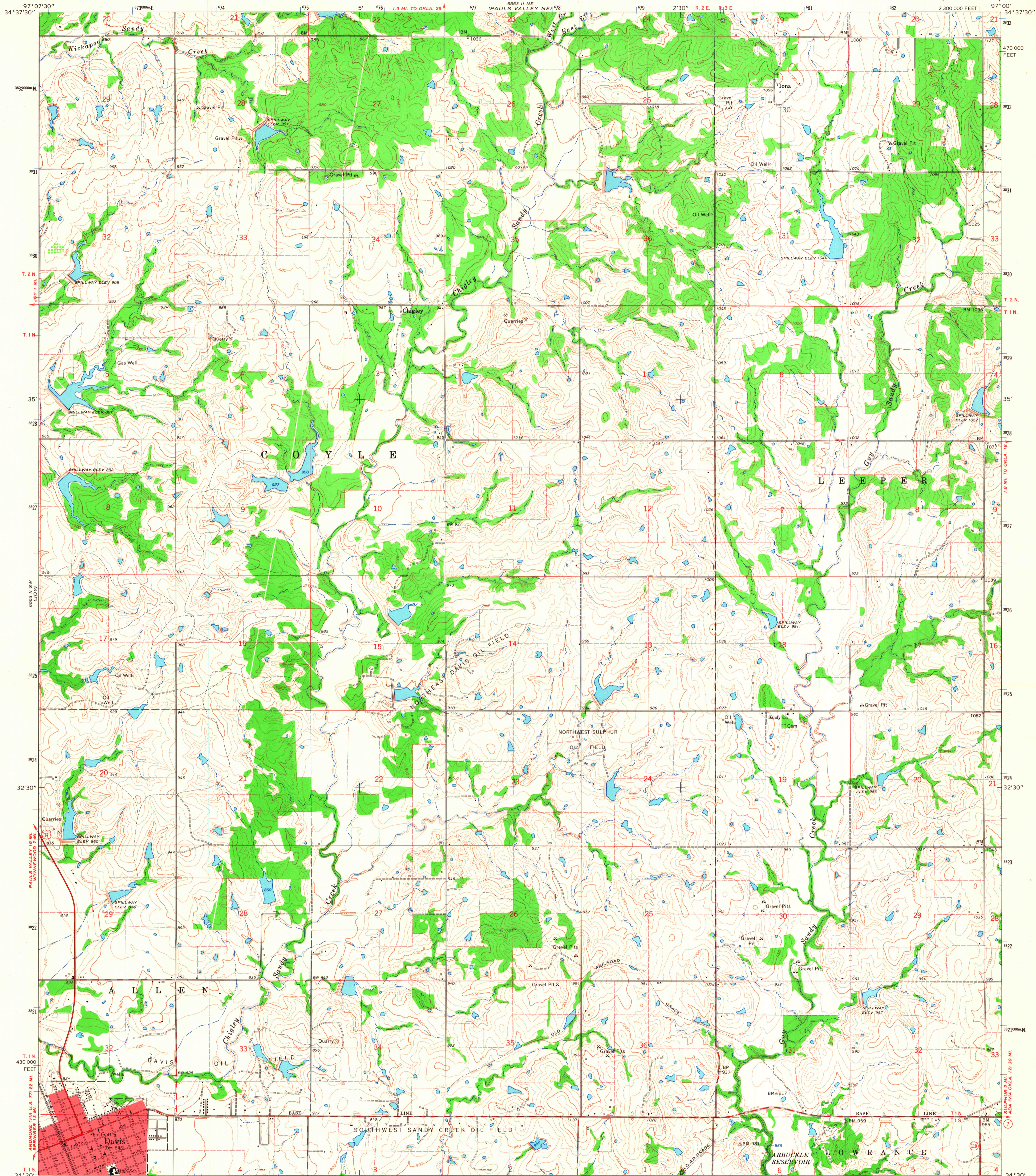


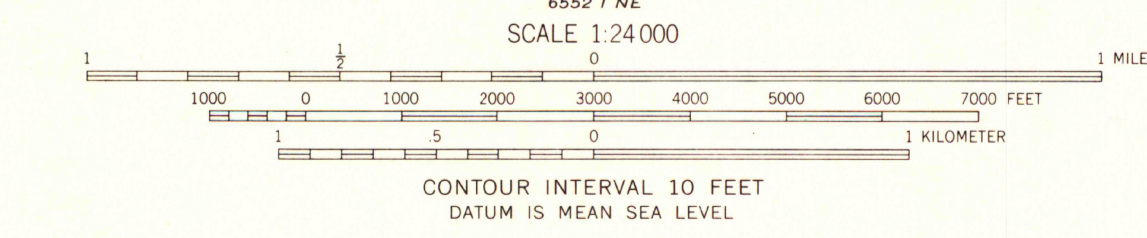
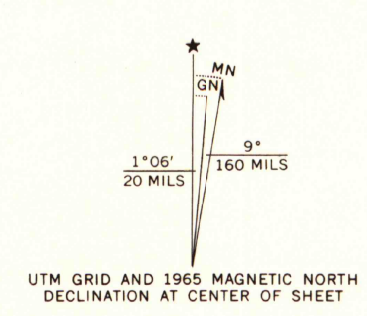
PAULS VALLEY NE

UNITED STATES  
DEPARTMENT OF THE INTERIOR  
GEOLOGICAL SURVEY

DAVIS QUADRANGLE  
OKLAHOMA—MURRAY CO.  
7.5 MINUTE SERIES (TOPOGRAPHIC)



Maped, edited, and published by the Geological Survey  
Control by USGS, US&GS, U. S. Bureau of Reclamation, and  
Oklahoma Highway Department  
Topography by photogrammetric methods from aerial  
photographs taken 1962. Field checked 1965  
Polye ic projection. 1927 North American datum  
10,000-foot grid based on Oklahoma coordinate system, south zone  
1000-meter Universal Transverse Mercator grid ticks,  
zone 14, shown in blue  
Area covered by dashed light-blue pattern is  
subject to controlled inundation  
Red tint indicates area in which only landmark buildings are shown  
Fine red dashed lines indicate selected fence and field lines where  
generally visible on aerial photographs. This information is unchecked



ROAD CLASSIFICATION

Heavy-duty	Light-duty
Medium-duty	Unimproved dirt
U.S. Route	State Route



MAP AND AIR PHOTO LIBRARY  
University of Wisconsin

DAVIS, OKLA.  
N3430—W9700/7.5

THIS MAP COMPLIES WITH NATIONAL MAP ACCURACY STANDARDS  
FOR SALE BY U. S. GEOLOGICAL SURVEY, DENVER, COLORADO 80225, OR WASHINGTON, D. C. 20242  
A FOLDER DESCRIBING TOPOGRAPHIC MAPS AND SYMBOLS IS AVAILABLE ON REQUEST

1965  
AMS 6553 II SE—SERIES V883