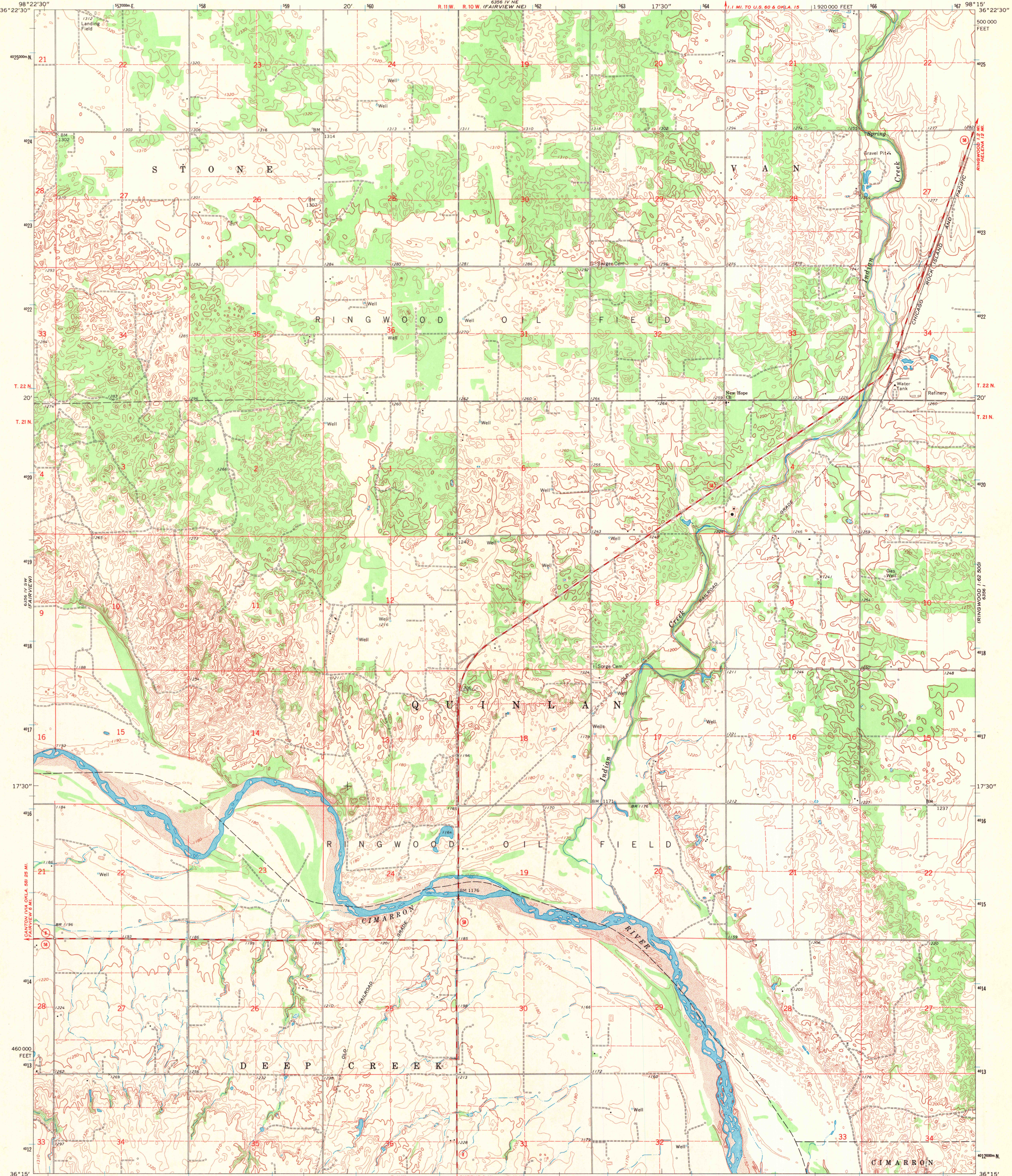


6356 IV NW  
(FAIRVIEW SE)

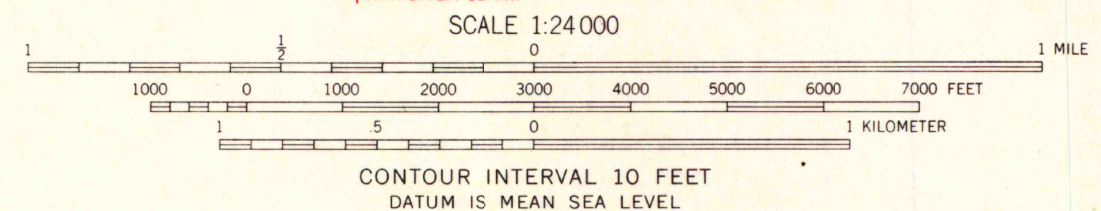
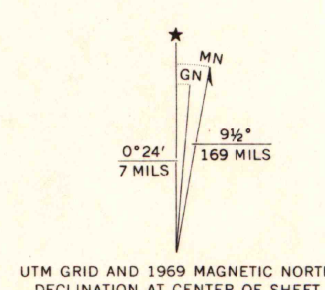
UNITED STATES  
DEPARTMENT OF THE INTERIOR  
GEOLOGICAL SURVEY

FAIRVIEW SE QUADRANGLE  
OKLAHOMA—MAJOR CO.  
7.5 MINUTE SERIES (TOPOGRAPHIC)

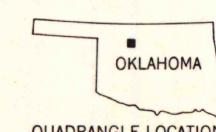
6356 IV SE  
(RINGWOOD 1:62 500)



Mapped, edited, and published by the Geological Survey  
Control by USGS and USC&GS  
Topography by photogrammetric methods from aerial  
photographs taken 1968. Field checked 1969  
Polyconic projection. 1927 North American datum  
10,000-foot grid based on Oklahoma coordinate system, north zone  
1000-meter Universal Transverse Mercator grid ticks,  
zone 14, shown in blue  
Fine red dashed lines indicate selected fence and field lines where  
generally visible on aerial photographs. This information is unchecked



CONTOUR INTERVAL 10 FEET  
DATUM IS MEAN SEA LEVEL



ROAD CLASSIFICATION  
Secondary highway, all weather. Light-duty road, all weather, hard surface. Improved surface  
Unimproved road, fair or dry  
Other  
State Route

MAP AND AIR PHOTO  
LIBRARY

OCT 15 1971

University of Wisconsin

FAIRVIEW SE, OKLA.  
N3615—W9815/7.5

1969

AMS 6356 IV SE—SERIES V883

THIS MAP COMPLIES WITH NATIONAL MAP ACCURACY STANDARDS  
FOR SALE BY U. S. GEOLOGICAL SURVEY, DENVER, COLORADO 80225, OR WASHINGTON, D. C. 20242  
AND BY THE OKLAHOMA GEOLOGICAL SURVEY, NORMAN, OKLAHOMA 73069  
A FOLDER DESCRIBING TOPOGRAPHIC MAPS AND SYMBOLS IS AVAILABLE ON REQUEST

JAMES 1:62 500  
6356 IV SE