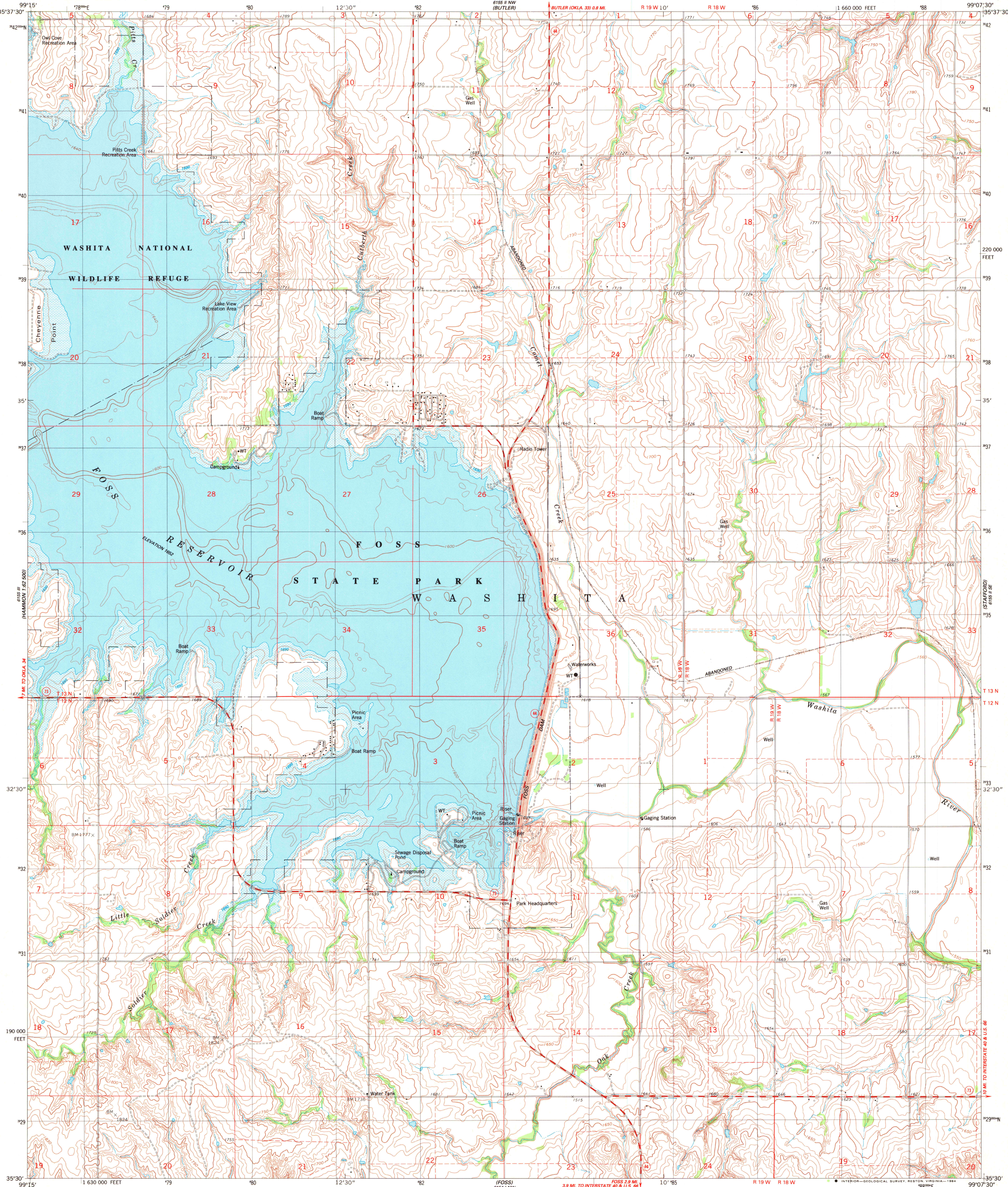


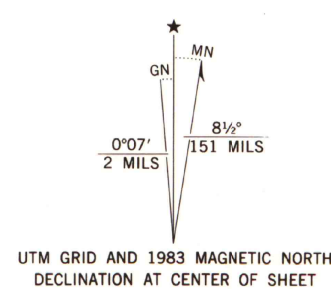
UNITED STATES
DEPARTMENT OF THE INTERIOR
GEOLOGICAL SURVEY

STATE OF OKLAHOMA

FOSS DAM QUADRANGLE
OKLAHOMA-CUSTER CO.
7.5 MINUTE SERIES (TOPOGRAPHIC)
SW4 BUTLER 15' QUADRANGLE



Mapped, edited, and published by the Geological Survey in cooperation with the Oklahoma Highway Department, Oklahoma Water Resources Board, and Oklahoma State Soil Conservation Board.
Control by USGS and NOS/NOAA
Topography by photogrammetric methods from aerial photographs taken 1981. Field checked 1981. Map edited 1983
Projection and 10,000-foot grid ticks: Oklahoma coordinate system, north zone (Lambert conformal conic)
1000-meter Universal Transverse Mercator grid, zone 14
1927 North American Datum
To place on the predicted North American Datum 1983, move the projection lines 2 meters south and 33 meters east as shown by dashed corner ticks.
There may be private inholdings within the boundaries of the National or State reservations shown on this map.
Areas covered by dashed light-blue pattern are subject to controlled inundation.



SCALE 1:24 000
1 000 0 1000 2000 3000 4000 5000 6000 7000 FEET
1 5 0 1 KILOMETER
CONTOUR INTERVAL 10 FEET
CONTOUR INTERVAL 20 FEET IN FOSS RESERVOIR
NATIONAL GEODETIC VERTICAL DATUM OF 1929

THIS MAP COMPLIES WITH NATIONAL MAP ACCURACY STANDARDS
FOR SALE BY U.S. GEOLOGICAL SURVEY, DENVER, COLORADO 80225, OR RESTON, VIRGINIA 22092
AND OKLAHOMA GEOLOGICAL SURVEY, NORMAN, OKLAHOMA 73069
A FOLDER DESCRIBING TOPOGRAPHIC MAPS AND SYMBOLS IS AVAILABLE ON REQUEST



ROAD CLASSIFICATION
Primary highway, hard surface
Secondary highway, hard surface
Light-duty road, hard or improved surface
Unimproved road
Interstate Route
U. S. Route
State Route

A.H. ROBINSON
MAP LIBRARY

DEC 5 1984

University of Wisconsin
Madison

FOSS DAM, OKLA.
SW4 BUTLER 15' QUADRANGLE
35099-E2-TF-024

1983

DMA 6155 II SW-SERIES V883