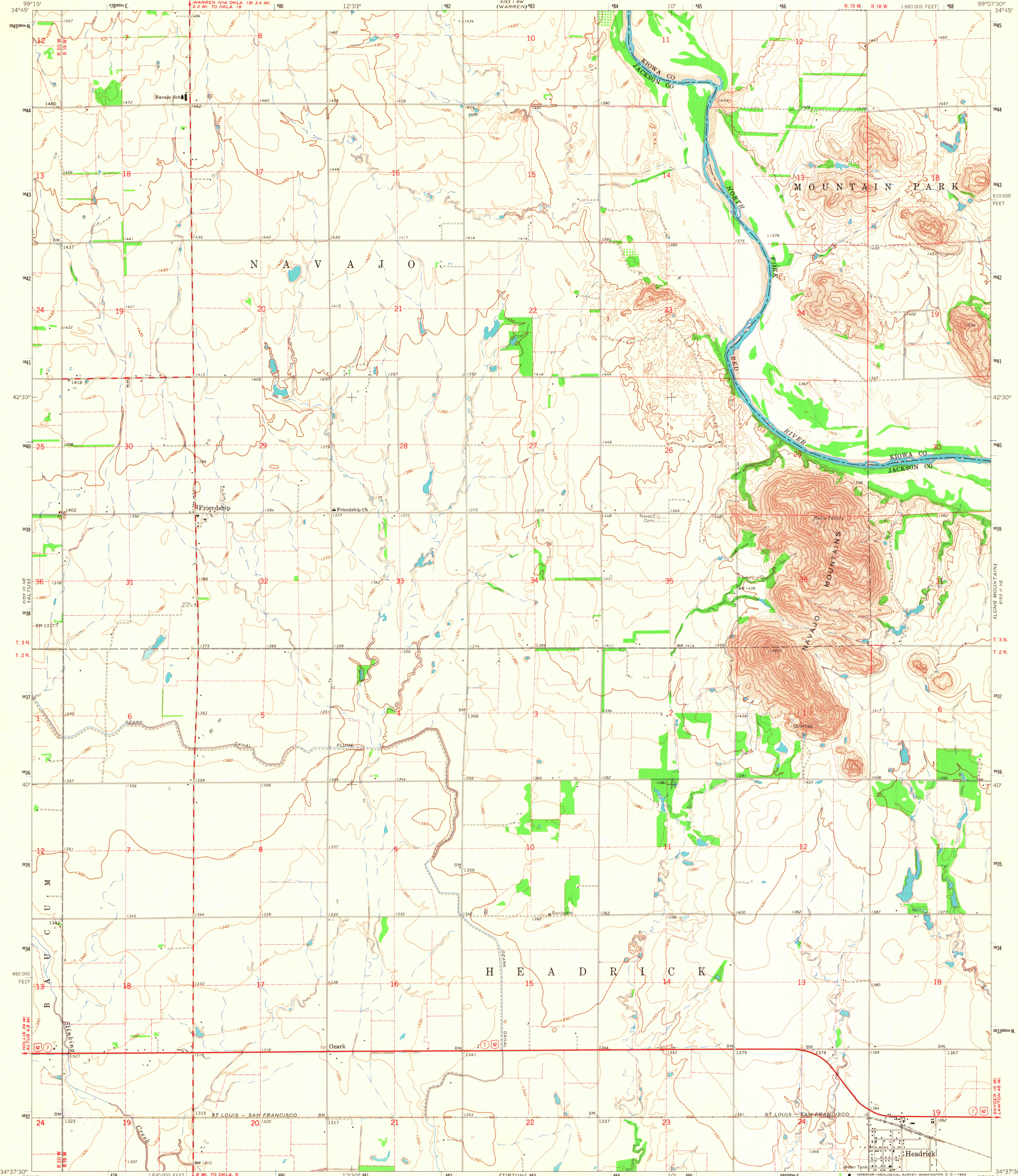
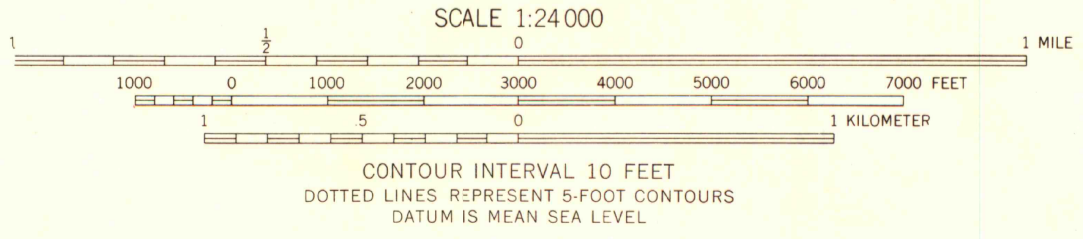
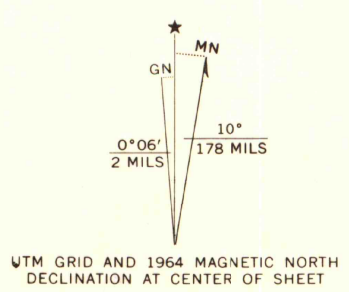


583 1 SE
(FOOSELL 17)



Mapped, edited, and published by the Geological Survey
Control by USGS, USCGS, and Oklahoma Geological Survey
Topography by photogrammetric methods from aerial photographs taken 1960. Field checked 1964
Polyconic projection. 1927 North American datum
10,000-foot grid based on Oklahoma coordinate system, south zone
1000-meter Universal Transverse Mercator grid ticks, zone 14, shown in blue
Fine red dashed lines indicate selected fence and field lines where generally visible on aerial photographs. This information is unchecked



ROAD CLASSIFICATION
Heavy-duty ——— Light-duty ———
Medium-duty - - - - - Unimproved dirt - - - - -
U.S. Route □ State Route ○

THIS MAP COMPLIES WITH NATIONAL MAP ACCURACY STANDARDS
FOR SALE BY U. S. GEOLOGICAL SURVEY, DENVER 25, COLORADO OR WASHINGTON 25, D. C.
A FOLDER DESCRIBING TOPOGRAPHIC MAPS AND SYMBOLS IS AVAILABLE ON REQUEST

AIR PHOTO LIBRARY
University of Wisconsin

HEADRICK, OKLA.
N3437.5 - W9907.5/7.5
1964
AMS 6153 II NW - SERIES V883