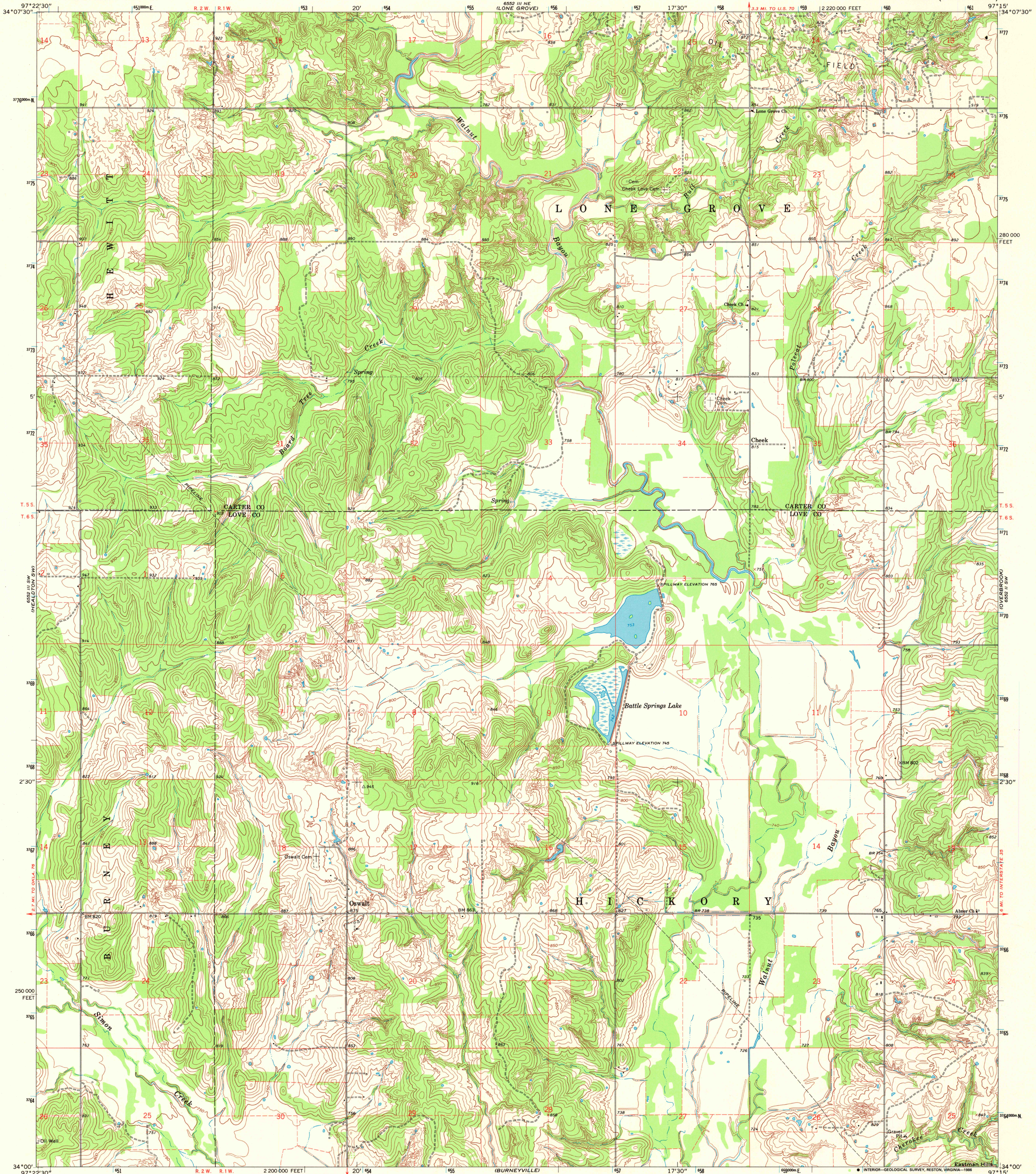
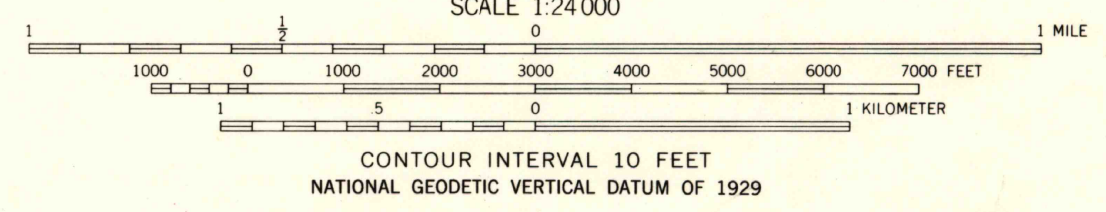
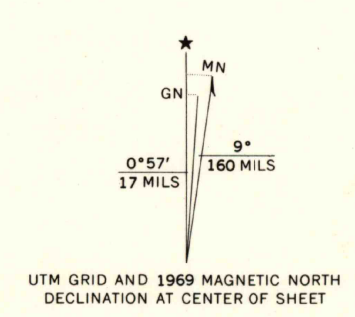


UNITED STATES
DEPARTMENT OF THE INTERIOR
GEOLOGICAL SURVEY

HEALDTON SE QUADRANGLE
OKLAHOMA
7.5 MINUTE SERIES (TOPOGRAPHIC)



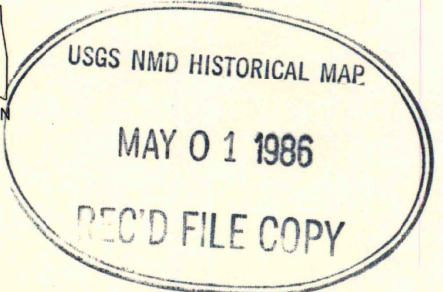
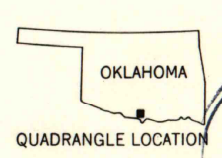
Mapped, edited, and published by the Geological Survey
Control by USGS and USC&GS
Topography by photogrammetric methods from aerial photographs taken 1967. Field checked 1969
Polyconic projection. 1927 North American datum
10,000-foot grid based on Oklahoma coordinate system, south zone
1000-meter Universal Transverse Mercator grid ticks, zone 14, shown in blue
Fine red dashed lines indicate selected fence and field lines where generally visible on aerial photographs. This information is unchecked
To place on the predicted North American Datum 1983, move the projection lines 7 meters south and 26 meters east as shown by dashed corner ticks



CONTOUR INTERVAL 10 FEET
NATIONAL GEODETIC VERTICAL DATUM OF 1929

THIS MAP COMPLIES WITH NATIONAL MAP ACCURACY STANDARDS
FOR SALE BY U.S. GEOLOGICAL SURVEY, DENVER, COLORADO 80225, OR RESTON, VIRGINIA 22092
AND OKLAHOMA GEOLOGICAL SURVEY, NORMAN, OKLAHOMA 73069
A FOLDER DESCRIBING TOPOGRAPHIC MAPS AND SYMBOLS IS AVAILABLE ON REQUEST

ROAD CLASSIFICATION
Light-duty road, all weather, improved surface
Unimproved road, fair or dry weather



HEALDTON SE, OKLA.
34097-A3-TF-024
1969
DMA 6552 III SE—SERIES V883