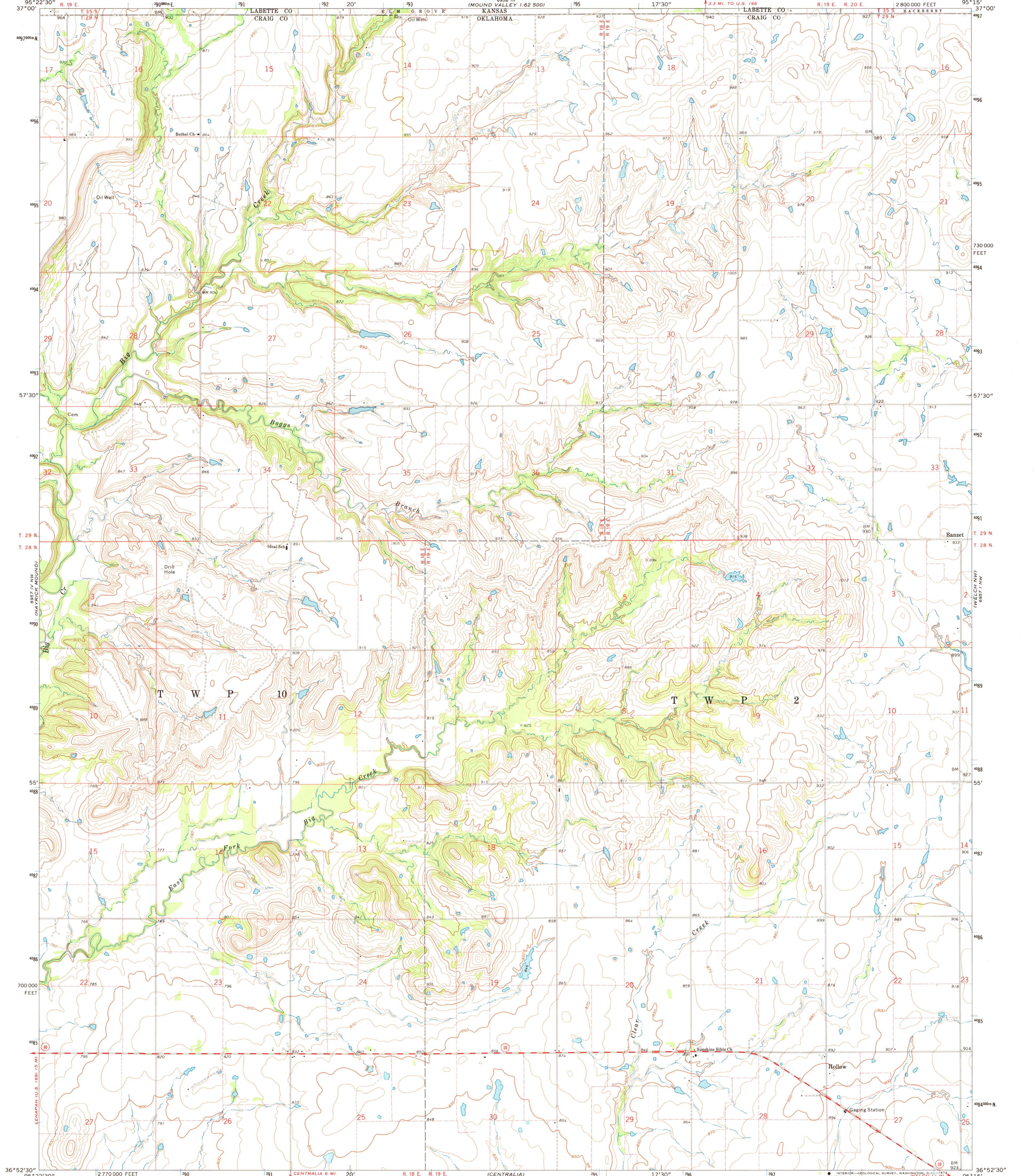
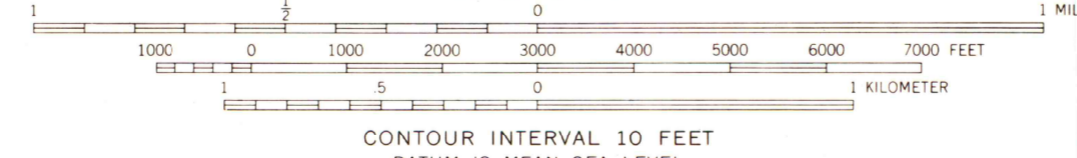
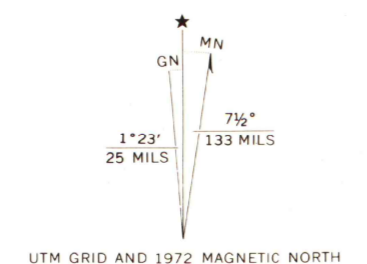


UNITED STATES
DEPARTMENT OF THE INTERIOR
GEOLOGICAL SURVEY

HOLLOW QUADRANGLE
OKLAHOMA-KANSAS
7.5 MINUTE SERIES (TOPOGRAPHIC)



Mapped, edited, and published by the Geological Survey
Control by USGS and USC&GS
Topography by photogrammetric methods from aerial photographs taken 1971. Field checked 1972
Projection and 10,000-foot grid ticks: Oklahoma coordinate system, north zone (Lambert conformal conic)
1000-meter Universal Transverse Mercator grid ticks, zone 15, shown in blue. 1927 North American datum
Fine red dashed lines indicate selected fence and field lines where generally visible on aerial photographs. This information is unchecked



CONTOUR INTERVAL 10 FEET
DATUM IS MEAN SEA LEVEL

THIS MAP COMPLIES WITH NATIONAL MAP ACCURACY STANDARDS
FOR SALE BY U. S. GEOLOGICAL SURVEY, DENVER, COLORADO 80225, OR WASHINGTON, D. C. 20242,
OKLAHOMA GEOLOGICAL SURVEY, NORMAN, OKLAHOMA 73059,
AND STATE GEOLOGICAL SURVEY, LAWRENCE, KANSAS 66044
A FOLDER DESCRIBING TOPOGRAPHIC MAPS AND SYMBOLS IS AVAILABLE ON REQUEST



MAP AND AIR PHOTO
LIBRARY

SEP 19 1974

University of Wisconsin

ROAD CLASSIFICATION
Primary highway, hard surface ————
Secondary highway, hard surface ————
Light-duty road, hard or improved surface ————
Unimproved road ————
Interstate Route ————
U. S. Route ————
State Route ————

HOLLOW, OKLA.—KANS.
N3652.5-W9515/7.5
1972

AMS 6957 IV NE—SERIES V883