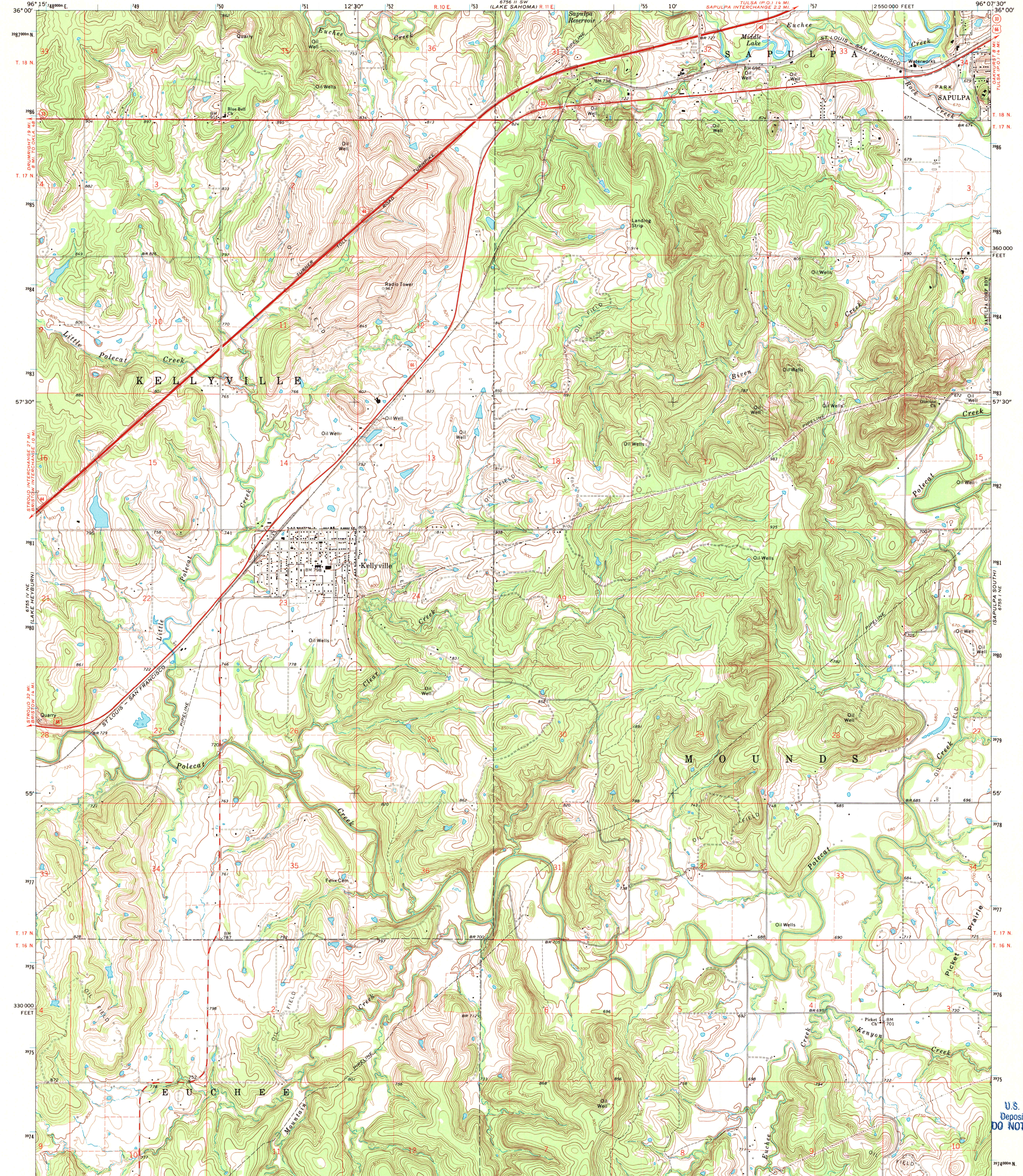
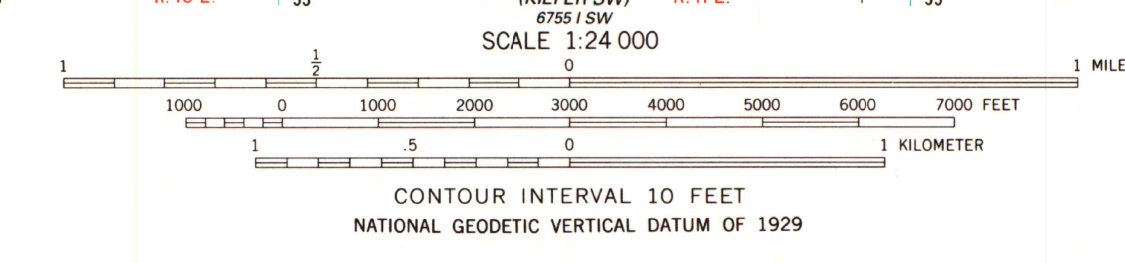
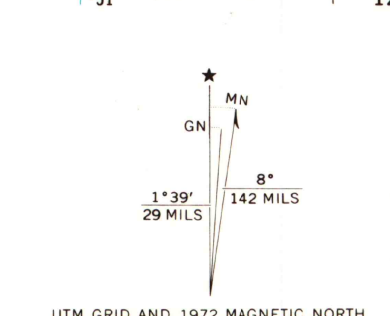


UNITED STATES
DEPARTMENT OF THE INTERIOR
GEOLOGICAL SURVEY

KELLYVILLE QUADRANGLE
OKLAHOMA—CREEK CO.
7.5 MINUTE SERIES (TOPOGRAPHIC)
NW 4, KIEFER 15' QUADRANGLE



Mapped, edited, and published by the Geological Survey
Control by USGS and USC&GS
Topography by photogrammetric methods from aerial photographs taken 1970. Field checked 1972
Polyconic projection. 1927 North American datum 10,000-foot grid based on Oklahoma coordinate system, north zone 1000-meter Universal Transverse Mercator grid ticks, zone 14, shown in blue
Fine red dashed lines indicate selected fence and field lines where generally visible on aerial photographs. This information is unchecked
To place on the predicted North American Datum 1983, move the projection lines 4 meters south and 24 meters east as shown by dashed corner ticks
Map photospected 1981
No major culture or drainage changes observed



THIS MAP COMPLIES WITH NATIONAL MAP ACCURACY STANDARDS
FOR SALE BY U.S. GEOLOGICAL SURVEY, DENVER, COLORADO 80225, OR RESTON, VIRGINIA 22092
AND OKLAHOMA GEOLOGICAL SURVEY, NORMAN, OKLAHOMA 73069
A FOLDER DESCRIBING TOPOGRAPHIC MAPS AND SYMBOLS IS AVAILABLE ON REQUEST



ROAD CLASSIFICATION

Primary highway, hard surface	Light-duty road, hard or improved surface
Secondary highway, hard surface	Unimproved road
Interstate Route	U.S. Route
	State Route

KELLYVILLE, OKLA.
NW 4, KIEFER 15' QUADRANGLE
35096-H2F-024

1972
PHOTOINSPECTED 1981
DMA 6755 1 NW—SERIES V883

U.S. Regional
Depository Copy
DO NOT DISCARD

A.H. ROBINSON
MAP LIBRARY

AUG 24 1989
University of Wisconsin
Madison