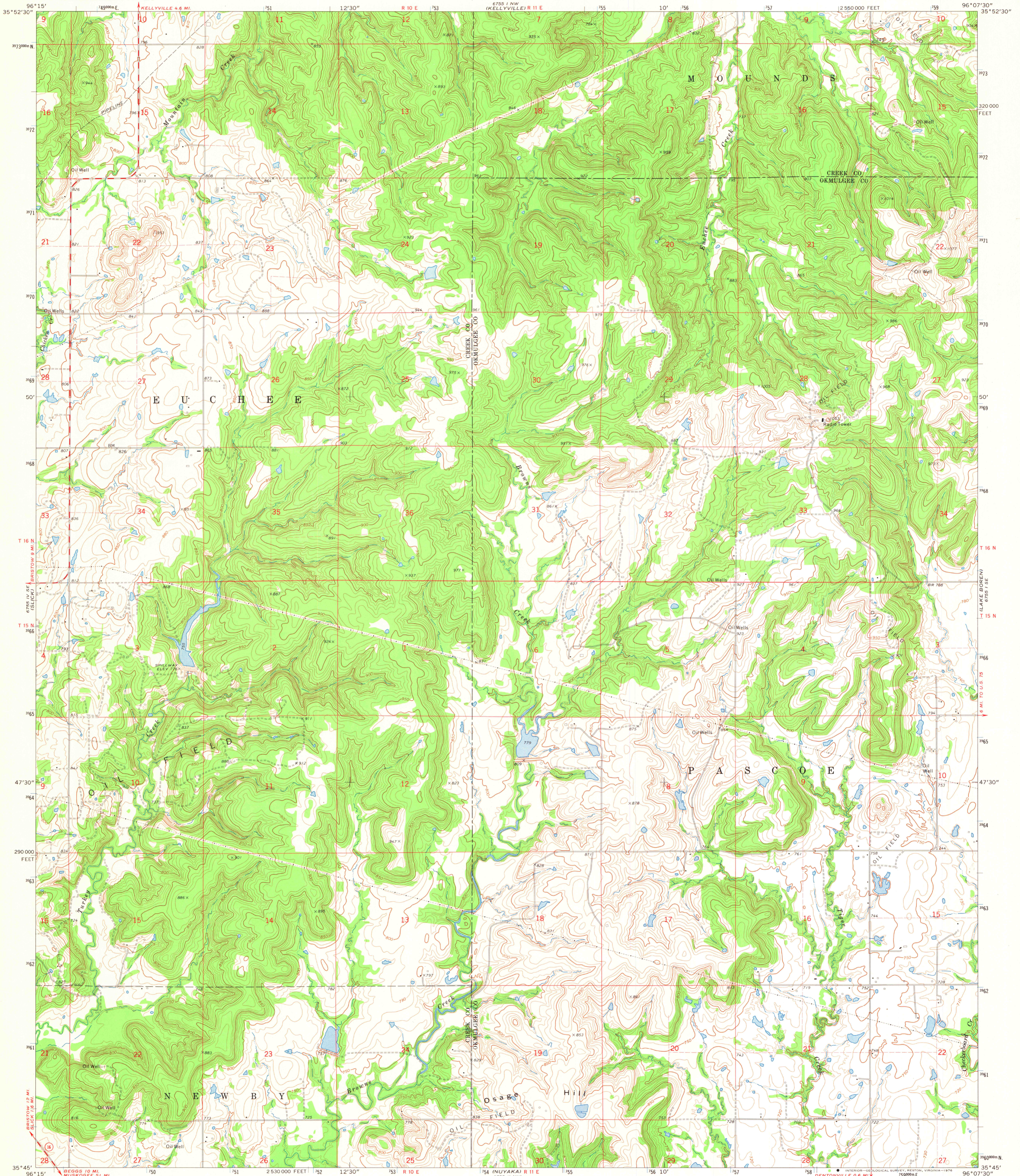
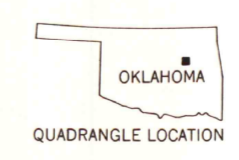
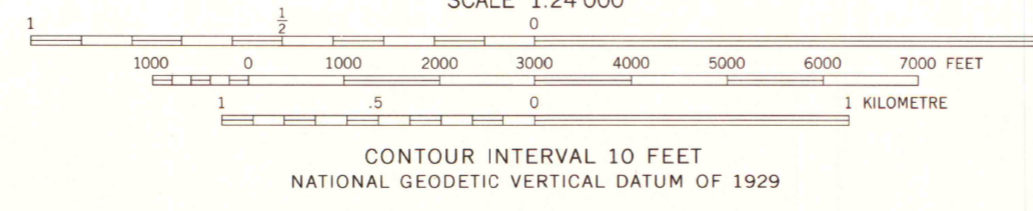
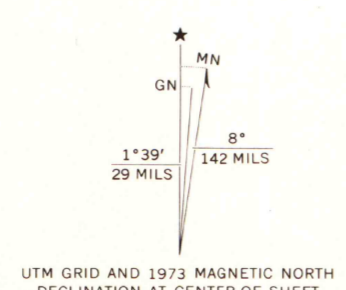


UNITED STATES
DEPARTMENT OF THE INTERIOR
GEOLOGICAL SURVEY

KIEFER SW QUADRANGLE
OKLAHOMA
7.5 MINUTE SERIES (TOPOGRAPHIC)



Mapped, edited, and published by the Geological Survey
Control by USGS, NOS/NOAA, and Oklahoma Highway Department
Topography by photogrammetric methods from aerial photographs taken 1972. Field checked 1973
Projection and 10,000-foot grid ticks: Oklahoma coordinate system, north zone (Lambert conformal conic)
1000-metre Universal Transverse Mercator grid ticks, zone 14, shown in blue. 1927 North American datum
Fine red dashed lines indicate selected fence and field lines where generally visible on aerial photographs. This information is unchecked



MAP AND AIR PHOTO
LIBRARY
MAR 23 1976
University of Wisconsin

KIEFER SW, OKLA.
SW/4 KIEFER 15' QUADRANGLE
N3545-W9607.5/7.5
1973

AMS 6755 1 SW - SERIES V885