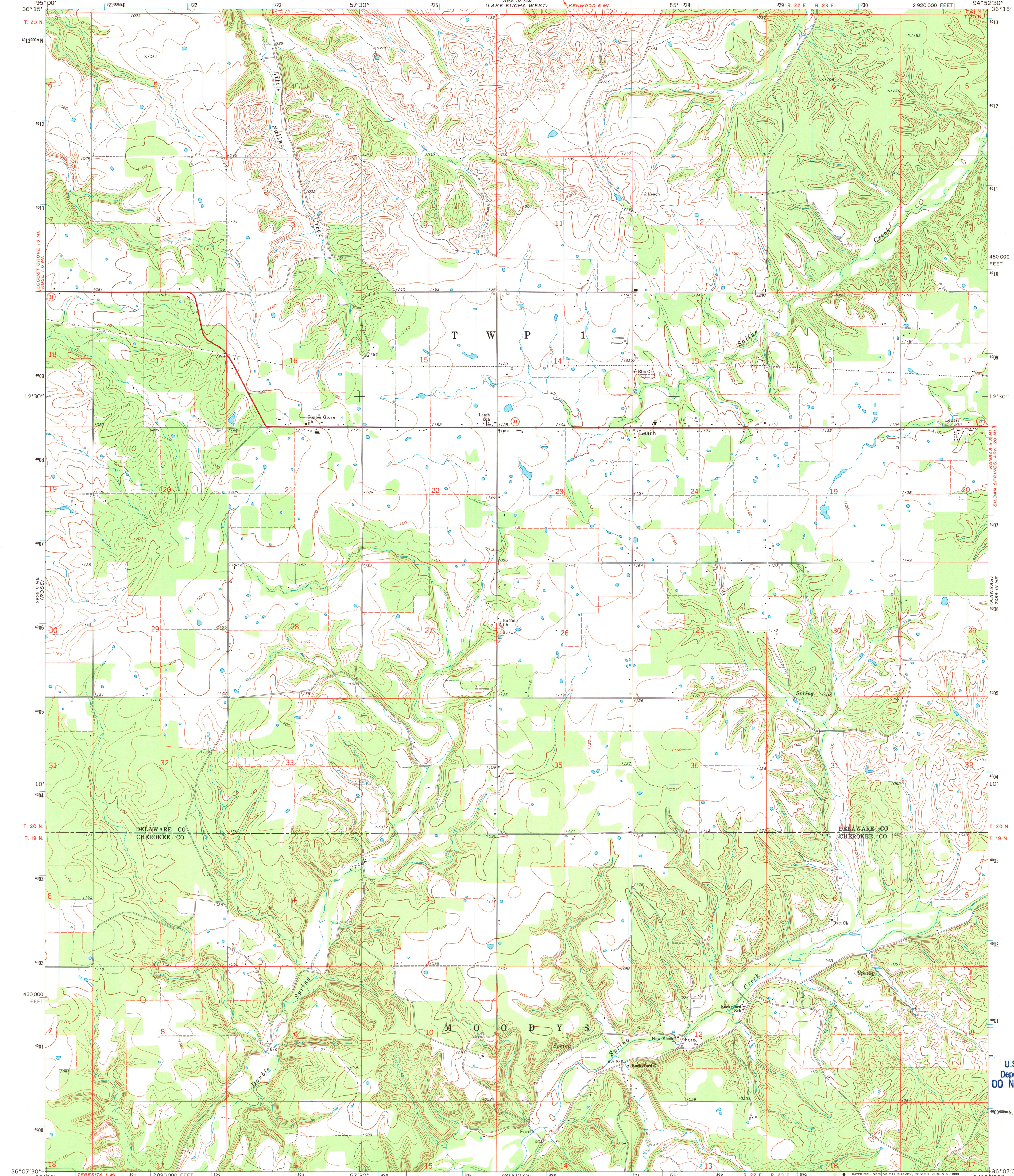
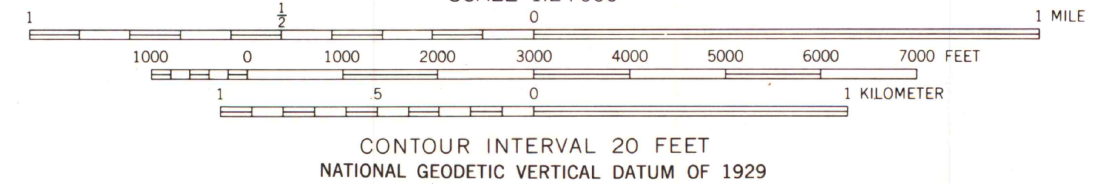
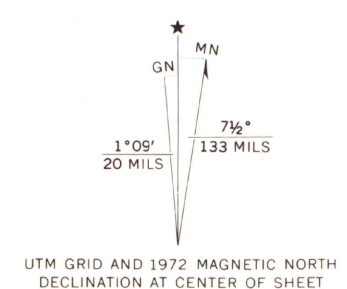


UNITED STATES
DEPARTMENT OF THE INTERIOR
GEOLOGICAL SURVEY

LEACH QUADRANGLE
OKLAHOMA
7.5 MINUTE SERIES (TOPOGRAPHIC)



Mapped, edited, and published by the Geological Survey
Control by USGS and USC&GS
Topography by photogrammetric methods from aerial photographs taken 1971. Field checked 1972
Projection and 10,000-foot grid ticks: Oklahoma coordinate system, north zone (Lambert conformal conic)
1000-meter Universal Transverse Mercator grid ticks, zone 15, shown in blue. 1927 North American datum
Fine red dashed lines indicate selected fence and field lines where generally visible on aerial photographs. This information is unchecked
To place on the predicted North American Datum 1983, move the projection lines 4 meters south and 20 meters east as shown by dashed corner ticks
Map photinspected 1981
No major culture or drainage changes observed



ROAD CLASSIFICATION

Primary highway, hard surface	Light-duty road, hard or improved surface
Secondary highway, hard surface	Unimproved road
Interstate Route	U.S. Route
	State Route

THIS MAP COMPLIES WITH NATIONAL MAP ACCURACY STANDARDS
FOR SALE BY U.S. GEOLOGICAL SURVEY, DENVER, COLORADO 80225, OR RESTON, VIRGINIA 22092
AND OKLAHOMA GEOLOGICAL SURVEY, NORMAN, OKLAHOMA 73069
A FOLDER DESCRIBING TOPOGRAPHIC MAPS AND SYMBOLS IS AVAILABLE ON REQUEST

U.S. Regional
Depository Copy
DO NOT DISCARD

A.H. ROBINSON
MAP LIBRARY
NOV - 2 1989
University of Wisconsin
Madison

LEACH, OKLA.
36094 B8-TF-024
PHOTOINSPECTED 1981
1972

DMA 7056 III NW - SERIES V883