

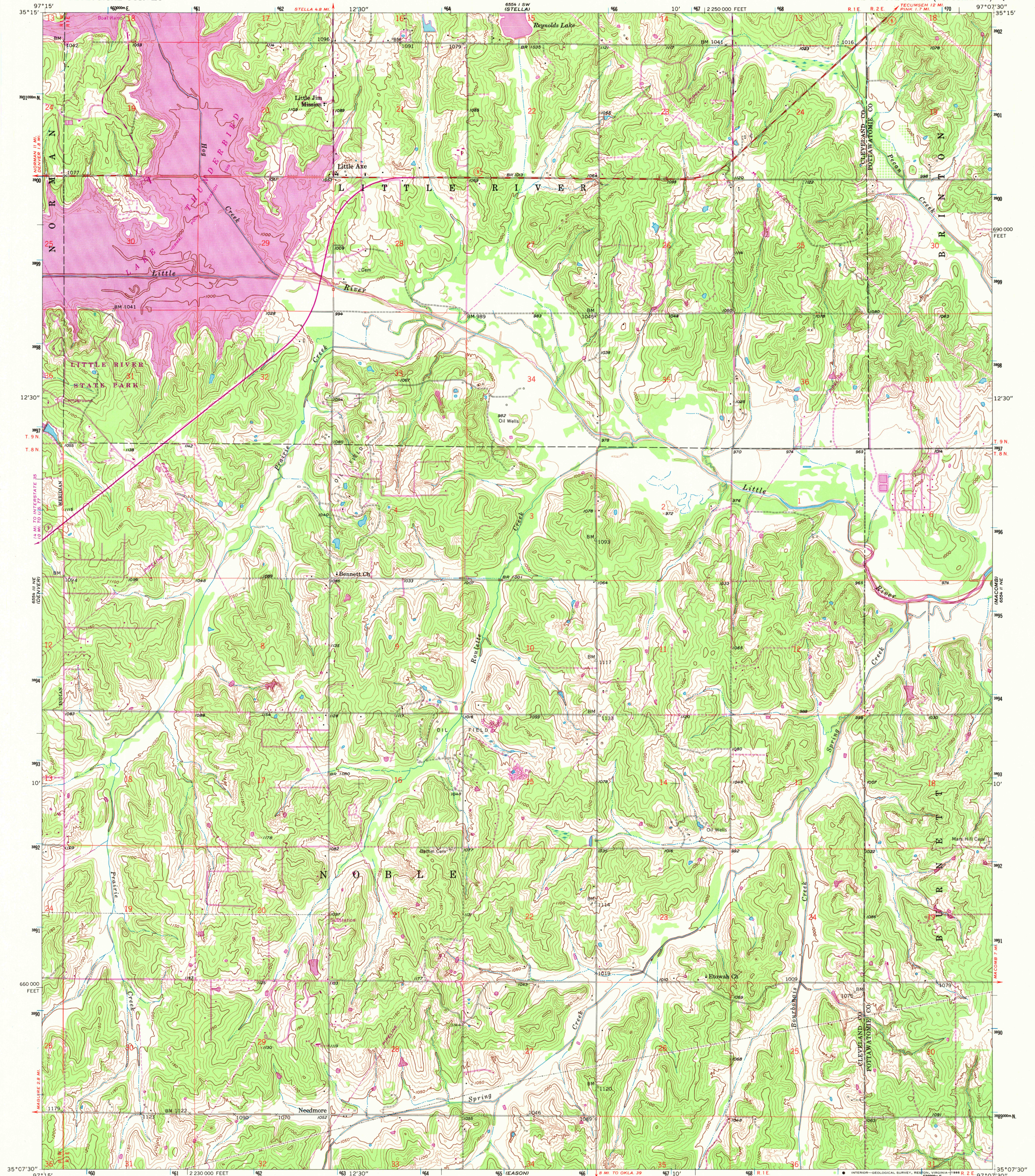
6554 I SE
(FRANKLIN)

UNITED STATES
DEPARTMENT OF THE INTERIOR
GEOLOGICAL SURVEY

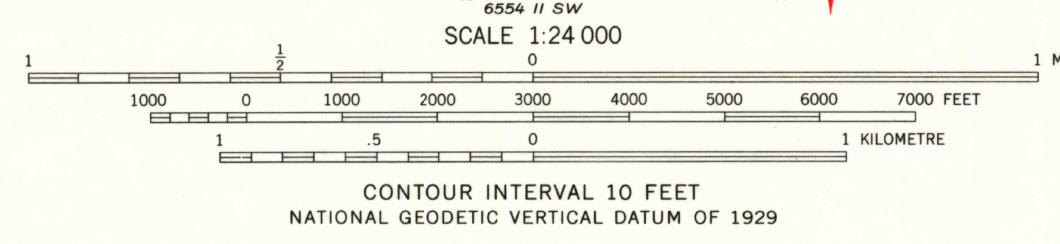
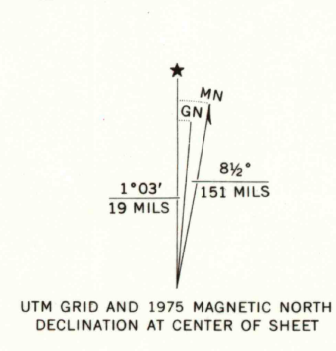
CITY OF OKLAHOMA CITY
DEPARTMENT OF PUBLIC WORKS

LITTLE AXE QUADRANGLE
OKLAHOMA
7.5 MINUTE SERIES (TOPOGRAPHIC)

6554 I SE
(SHAWNEE RESERVOIR)



Maped, edited, and published by the Geological Survey
Control by USGS, USC&GS, and Oklahoma Geological Survey
Topography by photogrammetric methods from aerial
photographs taken 1957. Field checked 1958
Polyconic projection. 1927 North American datum
10,000-foot grid based on Oklahoma coordinate system, south zone
1000-metre Universal Transverse Mercator grid ticks,
zone 14, shown in blue
Revisions shown in purple compiled from aerial photographs
taken 1969 and 1975. Woodland areas recompiled 1969
This information not field checked



USGS NMD HISTORICAL MAP
JUL 23 1986
REC'D FILE COPY

ROAD CLASSIFICATION
Medium-duty
Light-duty
Unimproved dirt
State Route
Heavy-duty

THIS MAP COMPLIES WITH NATIONAL MAP ACCURACY STANDARDS
FOR SALE BY U.S. GEOLOGICAL SURVEY, DENVER, COLORADO 80225, OR RESTON, VIRGINIA 22092
AND BY THE OKLAHOMA GEOLOGICAL SURVEY, NORMAN, OKLAHOMA 73069
A FOLDER DESCRIBING TOPOGRAPHIC MAPS AND SYMBOLS IS AVAILABLE ON REQUEST

To place on the predicted North American Datum 1983,
move the projection lines 4 meters south and
27 meters east as shown by dashed corner ticks

LITTLE AXE, OKLA.
35097-82-TF-024
1958
PHOTOREVISED 1969 AND 1975
DMA 6554 II NW-SERIES V883