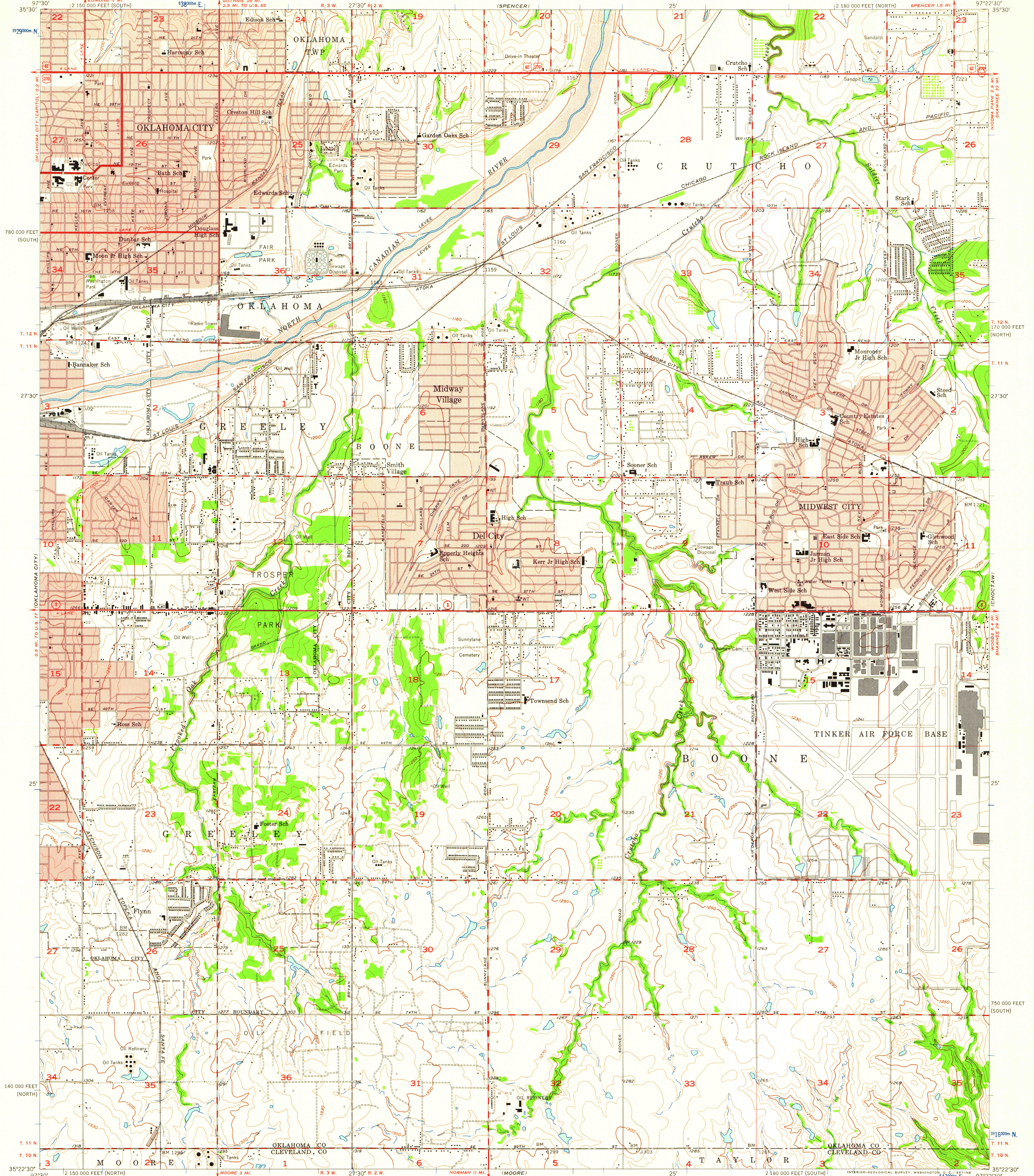


UNITED STATES  
DEPARTMENT OF THE INTERIOR  
GEOLOGICAL SURVEY

MIDWEST CITY QUADRANGLE  
OKLAHOMA  
7.5 MINUTE SERIES (TOPOGRAPHIC)  
NW/4 MOORE 15' QUADRANGLE



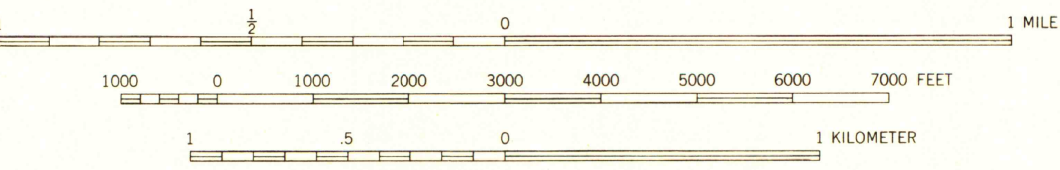
Mapped, edited, and published by the Geological Survey  
Control by USGS, USC&GS, and Oklahoma Geodetic Survey  
Culture and drainage in part compiled from aerial photographs  
taken 1954. Topography by planimetric surveys 1933-1934  
Revised 1956

Polyconic projection. 1927 North American datum  
10,000-foot grids based on Oklahoma coordinate system,  
north and south zones  
1000-meter Universal Transverse Mercator grid ticks,  
zone 14, shown in blue

Red tint indicates areas in which only  
landmark buildings are shown

TRUE NORTH  
MAGNETIC NORTH  
APPROXIMATE MEAN  
DECLINATION, 1956

SCALE 1:24000



CONTOUR INTERVAL 10 FEET  
DATUM IS MEAN SEA LEVEL



QUADRANGLE LOCATION

ROAD CLASSIFICATION  
Heavy-duty ——— Light-duty ———  
Medium-duty ——— Unimproved dirt ———  
U.S. Route ——— State Route ———

MIDWEST CITY, OKLA.  
NW/4 MOORE 15' QUADRANGLE  
N3522.5-W9722.5/7.5

UNIVERSITY OF WISCONSIN  
Department of Geography

1956

THIS MAP COMPLIES WITH NATIONAL MAP ACCURACY STANDARDS  
FOR SALE BY U. S. GEOLOGICAL SURVEY, DENVER 2, COLORADO OR WASHINGTON 25, D. C.  
A FOLDER DESCRIBING TOPOGRAPHIC MAPS AND SYMBOLS IS AVAILABLE ON REQUEST