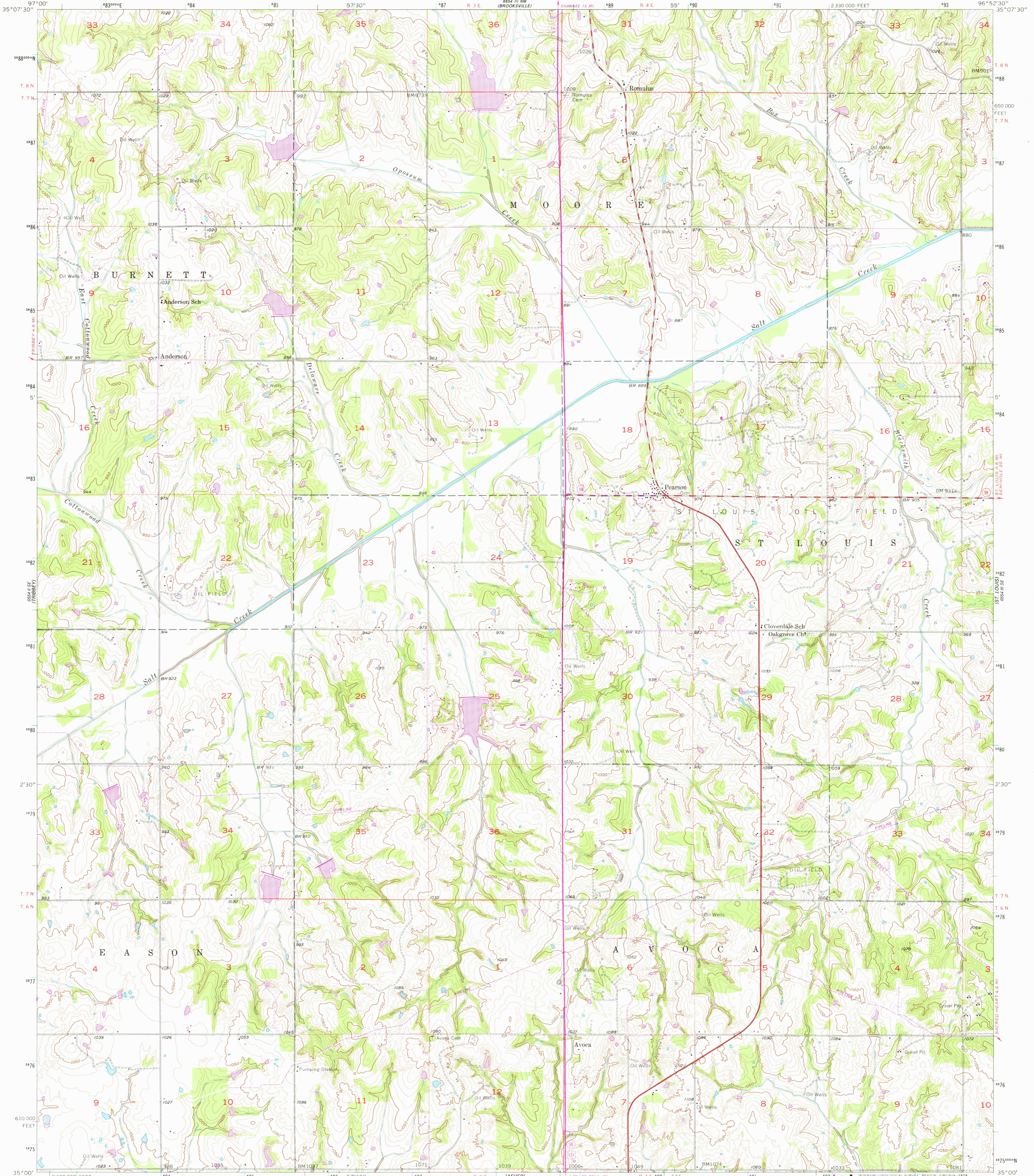


6854 N.E. (MADONNE)

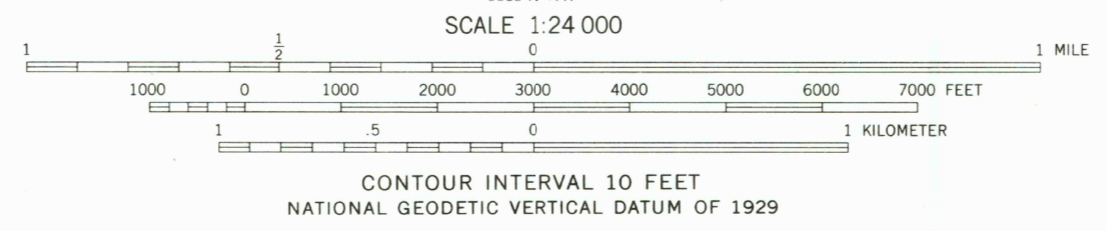
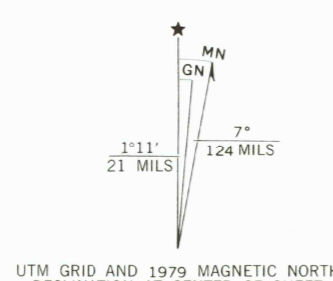


6854 N.E. (MADONNE)



Mapped, edited, and published by the Geological Survey Control by USGS and USC&GS Topography from aerial photographs by photogrammetric methods Aerial photographs taken 1957. Field check 1958 Polycyclic projection. 1927 North American datum 10,000-foot grid based on Oklahoma coordinate system, south zone 1000-meter Universal Transverse Mercator grid ticks, zone 14, shown in blue

Revisions shown in purple and woodland compiled from aerial photographs taken 1976 and other source data. This information not field checked. Map edited 1979



SCALE 1:24 000 CONTOUR INTERVAL 10 FEET NATIONAL GEODETIC VERTICAL DATUM OF 1929 THIS MAP COMPLIES WITH NATIONAL MAP ACCURACY STANDARDS FOR SALE BY U.S. GEOLOGICAL SURVEY, DENVER, COLORADO 80225, OR RESTON, VIRGINIA 22092 AND BY THE OKLAHOMA GEOLOGICAL SURVEY, NORMAN, OKLAHOMA 73069 A FOLDER DESCRIBING TOPOGRAPHIC MAPS AND SYMBOLS IS AVAILABLE ON REQUEST



ROAD CLASSIFICATION table with symbols for Interstate, U.S., and State routes, and descriptions for primary, secondary, and light-duty roads.

MAP AND AIR PHOTO LIBRARY PEARSON, OKLA. N3500-W9652.5/7.5 1958 PHOTOREVISED 1979 AMS 6654 III SW-SERIES V483

DEC 10 1979 University of Wisconsin