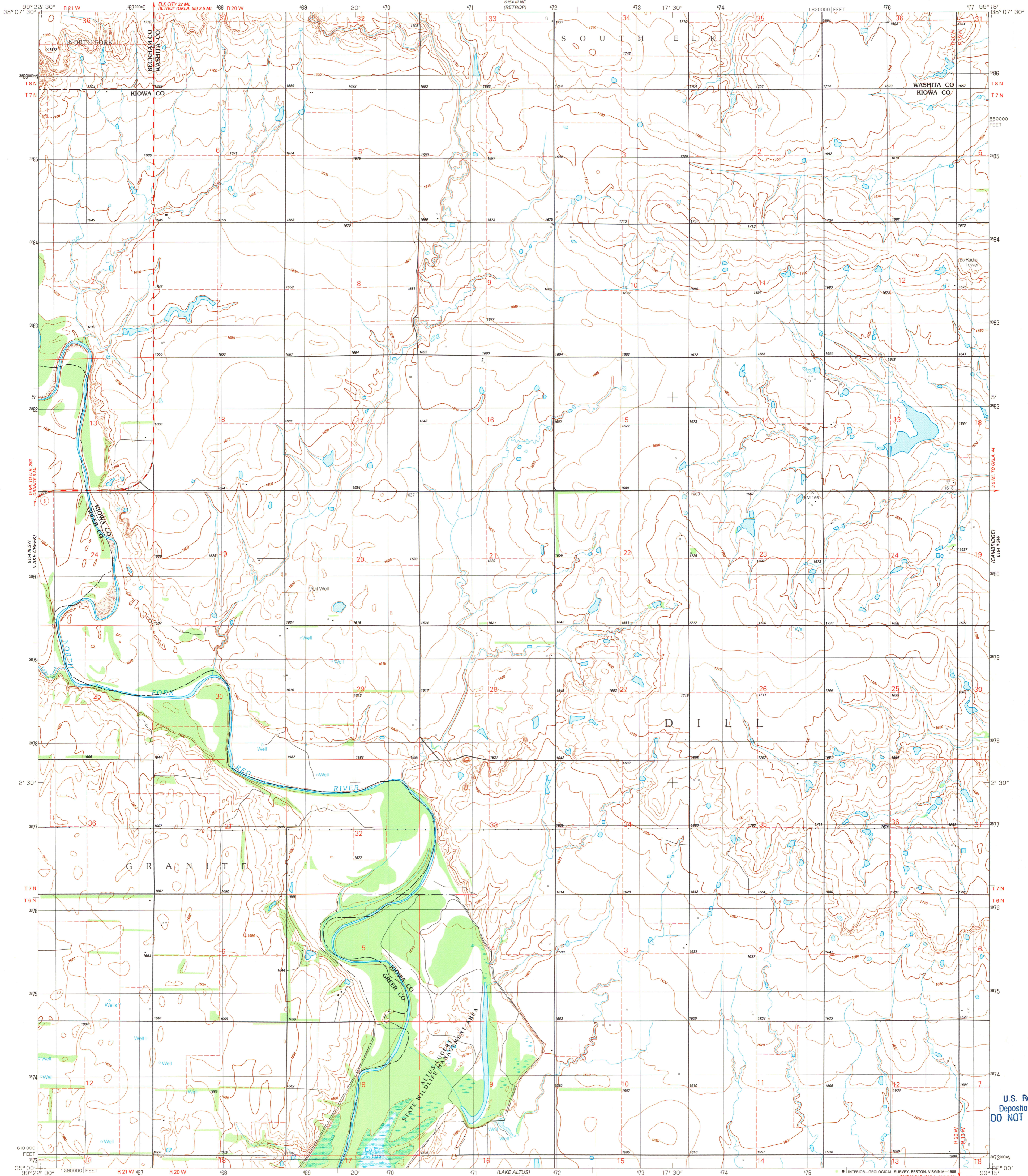
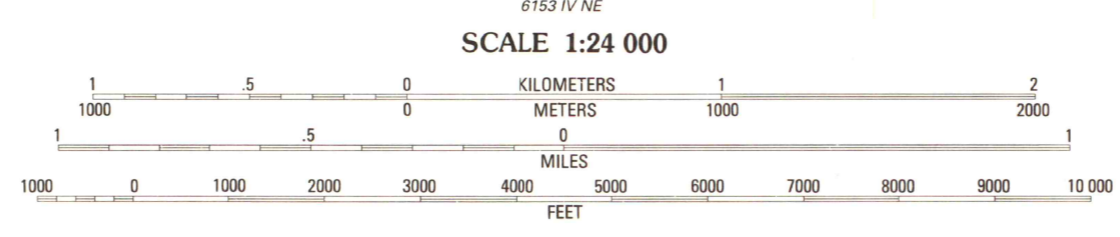
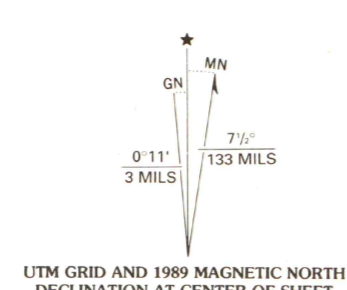


UNITED STATES
DEPARTMENT OF THE INTERIOR
GEOLOGICAL SURVEY

RETROP SE QUADRANGLE
OKLAHOMA
7.5 MINUTE SERIES (TOPOGRAPHIC)
SE/4 RETROP 15' QUADRANGLE



Produced by the United States Geological Survey
Control by USGS and NOS/NOAA
Topography by photogrammetric methods from aerial photographs taken 1958. Revised from aerial photographs taken 1984
Field checked 1989. Map edited 1989
Projection and 10,000-foot grid ticks: Oklahoma coordinate system, south zone (Lambert conformal conic)
1000-meter Universal Transverse Mercator grid, zone 14
1927 North American Datum
To place on the predicted North American Datum 1983, move the projection lines 3 meters south and 33 meters east as shown by dashed corner ticks
There may be private inholdings within the boundaries of the National or State reservations shown on this map
Areas covered by dashed light-blue pattern are subject to controlled inundation
Fine red dashed lines indicate selected fence and field lines where generally visible on aerial photographs. This information is unchecked



SCALE 1:24 000
CONTOUR INTERVAL 10 FEET
SUPPLEMENTARY CONTOUR INTERVAL 5 FEET
NATIONAL GEODETIC VERTICAL DATUM OF 1929

THIS MAP COMPLIES WITH NATIONAL MAP ACCURACY STANDARDS
FOR SALE BY U. S. GEOLOGICAL SURVEY, DENVER, COLORADO 80225, OR RESTON, VIRGINIA 22092
AND OKLAHOMA GEOLOGICAL SURVEY, NORMAN, OKLAHOMA 73069
A FOLDER DESCRIBING TOPOGRAPHIC MAPS AND SYMBOLS IS AVAILABLE ON REQUEST



ROAD CLASSIFICATION

Primary highway, hard surface	Light-duty road, hard or improved surface
Secondary highway, hard surface	Unimproved road
Interstate Route	U. S. Route
	State Route

U.S. Regional
Depository Copy
DO NOT DISCARD

A.H. ROBINSON
MAP LIBRARY
MAY 3 1 1990
University of Wisconsin
Madison
DMA 6154 III SE-SERIES V883