

UNITED STATES
DEPARTMENT OF THE INTERIOR
GEOLOGICAL SURVEY



RIPLEY QUADRANGLE
OKLAHOMA—PAYNE CO.
7.5 MINUTE SERIES (TOPOGRAPHIC)
SW/4 RIPLEY 15' QUADRANGLE
2 330 000 FEET

6656 III NW
(GLENCOE)

6656 III NW
(GLENCOE)

6656 III NW
(GLENCOE)

6656 III NW
(GLENCOE)

6656 III NW
(GLENCOE)

6656 III NW
(GLENCOE)

6656 III NW
(GLENCOE)

6656 III NW
(GLENCOE)

6656 III NW
(GLENCOE)

6656 III NW
(GLENCOE)

6656 III NW
(GLENCOE)

6656 III NW
(GLENCOE)

6656 III NW
(GLENCOE)

6656 III NW
(GLENCOE)

6656 III NW
(GLENCOE)

6656 III NW
(GLENCOE)

6656 III NW
(GLENCOE)

6656 III NW
(GLENCOE)

6656 III NW
(GLENCOE)

6656 III NW
(GLENCOE)

6656 III NW
(GLENCOE)

6656 III NW
(GLENCOE)

6656 III NW
(GLENCOE)

6656 III NW
(GLENCOE)

6656 III NW
(GLENCOE)

6656 III NW
(GLENCOE)

6656 III NW
(GLENCOE)

6656 III NW
(GLENCOE)

6656 III NW
(GLENCOE)

6656 III NW
(GLENCOE)

6656 III NW
(GLENCOE)

6656 III NW
(GLENCOE)

6656 III NW
(GLENCOE)

6656 III NW
(GLENCOE)

6656 III NW
(GLENCOE)

6656 III NW
(GLENCOE)

6656 III NW
(GLENCOE)

6656 III NW
(GLENCOE)

6656 III NW
(GLENCOE)

6656 III NW
(GLENCOE)

6656 III NW
(GLENCOE)

6656 III NW
(GLENCOE)

6656 III NW
(GLENCOE)

6656 III NW
(GLENCOE)

6656 III NW
(GLENCOE)

6656 III NW
(GLENCOE)

6656 III NW
(GLENCOE)

6656 III NW
(GLENCOE)

6656 III NW
(GLENCOE)

6656 III NW
(GLENCOE)

6656 III NW
(GLENCOE)

6656 III NW
(GLENCOE)

6656 III NW
(GLENCOE)

6656 III NW
(GLENCOE)

6656 III NW
(GLENCOE)

6656 III NW
(GLENCOE)

6656 III NW
(GLENCOE)

6656 III NW
(GLENCOE)

6656 III NW
(GLENCOE)

6656 III NW
(GLENCOE)

6656 III NW
(GLENCOE)

6656 III NW
(GLENCOE)

6656 III NW
(GLENCOE)

6656 III NW
(GLENCOE)

6656 III NW
(GLENCOE)

6656 III NW
(GLENCOE)

6656 III NW
(GLENCOE)

6656 III NW
(GLENCOE)

6656 III NW
(GLENCOE)

6656 III NW
(GLENCOE)

6656 III NW
(GLENCOE)

6656 III NW
(GLENCOE)

6656 III NW
(GLENCOE)

6656 III NW
(GLENCOE)

6656 III NW
(GLENCOE)

6656 III NW
(GLENCOE)

6656 III NW
(GLENCOE)

6656 III NW
(GLENCOE)

6656 III NW
(GLENCOE)

6656 III NW
(GLENCOE)

6656 III NW
(GLENCOE)

6656 III NW
(GLENCOE)

6656 III NW
(GLENCOE)

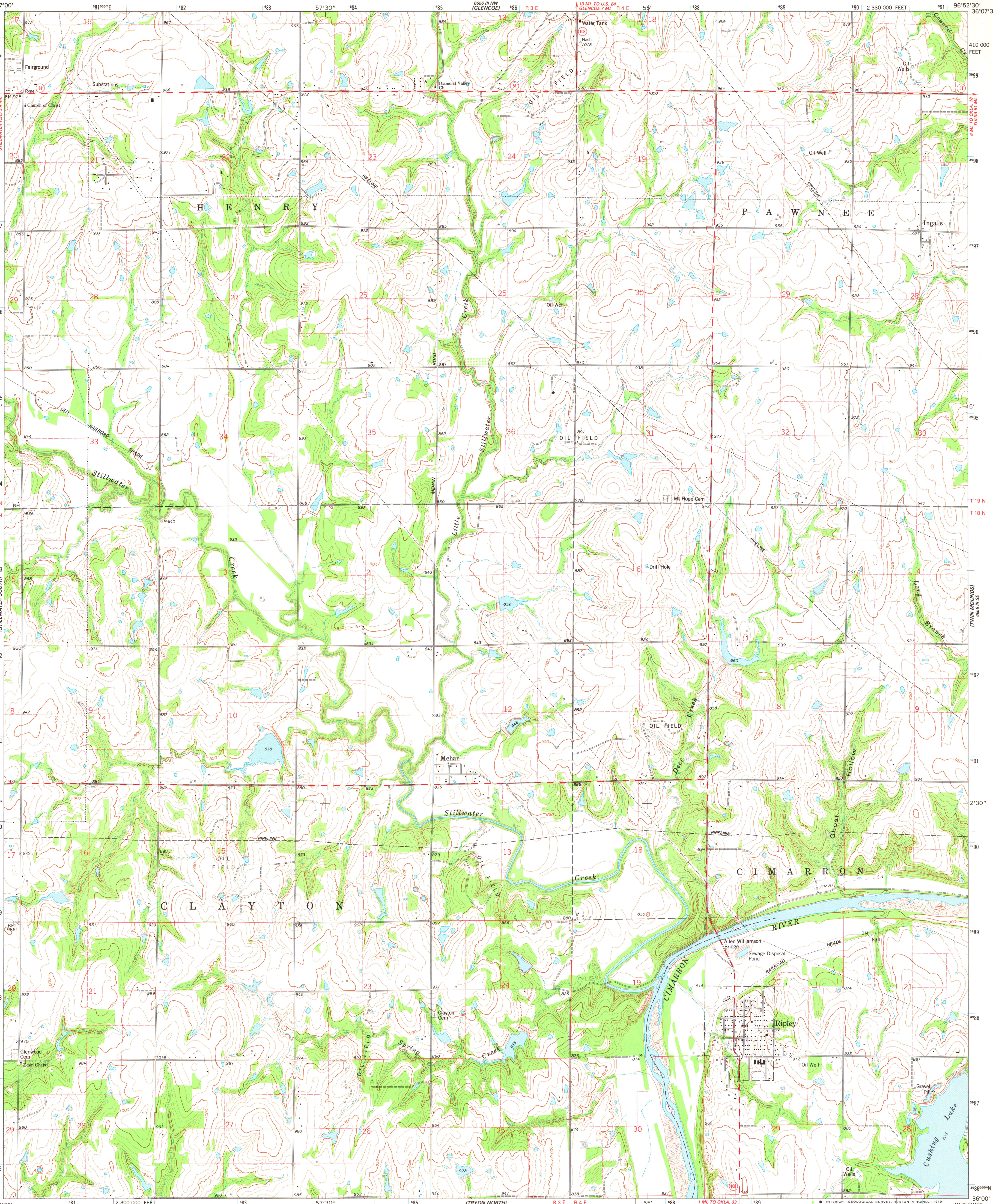
6656 III NW
(GLENCOE)

6656 III NW
(GLENCOE)

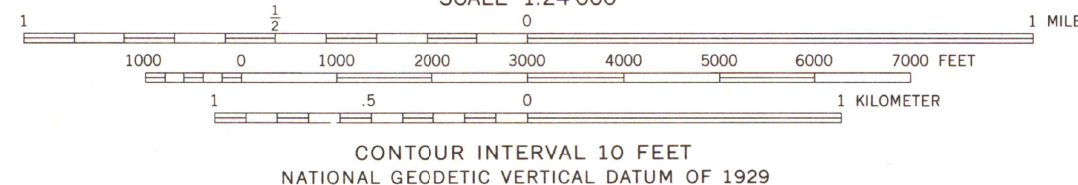
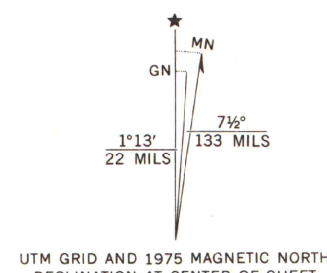
6656 III NW
(GLENCOE)

6656 III NW
(GLENCOE)

6656 III NW
(GLENCOE)



Mapped, edited, and published by the Geological Survey
Control by USGS and NOS/NOAA
Topography by photogrammetric methods from aerial
photographs taken 1974. Field checked 1975
Projection and 10,000-foot grid ticks: Oklahoma coordinate
system, north zone (Lambert conformal conic)
1000-meter Universal Transverse Mercator grid ticks,
zone 14, shown in blue. 1927 North American datum
Fine red dashed lines indicate selected fence and field lines where
generally visible on aerial photographs. This information is unchecked



THIS MAP COMPLIES WITH NATIONAL MAP ACCURACY STANDARDS
FOR SALE BY U. S. GEOLOGICAL SURVEY, DENVER, COLORADO 80225, OR RESTON, VIRGINIA 22092
AND BY THE OKLAHOMA GEOLOGICAL SURVEY, NORMAN, OKLAHOMA 73069
A FOLDER DESCRIBING TOPOGRAPHIC MAPS AND SYMBOLS IS AVAILABLE ON REQUEST



ROAD CLASSIFICATION
Primary highway, hard surface
Secondary highway, hard surface
Interstate Route
Light-duty road, hard or improved surface
Unimproved road
U. S. Route
State Route

RIPLEY, OKLA.
SW/4 RIPLEY 15' QUADRANGLE
N3600 — W9652.5/7.5

MAP AND AIR PHOTO LIBRARY

JUN 13 1979

1975
AMS 6656 III SW—SERIES V883 University of Wisconsin Madison