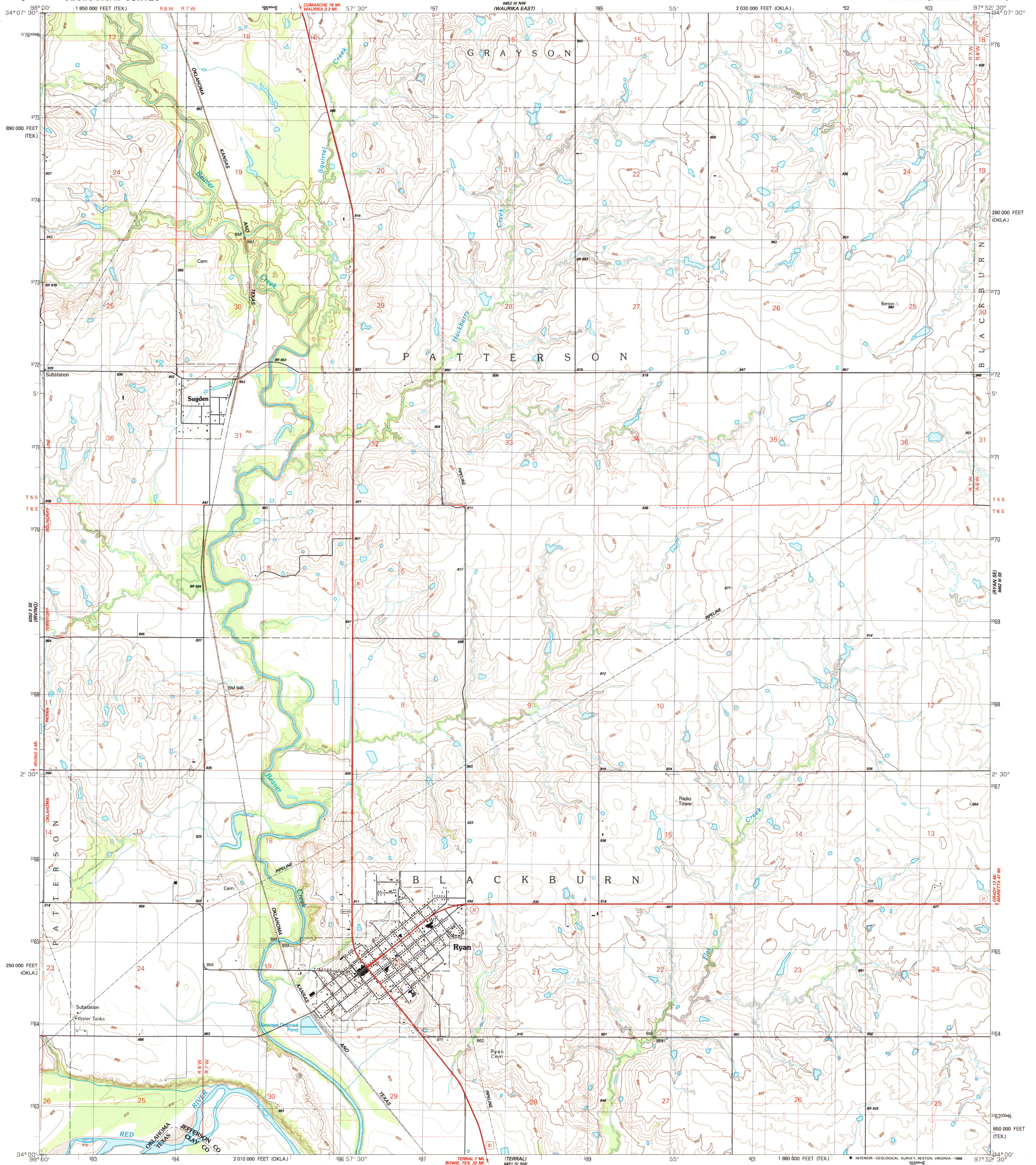
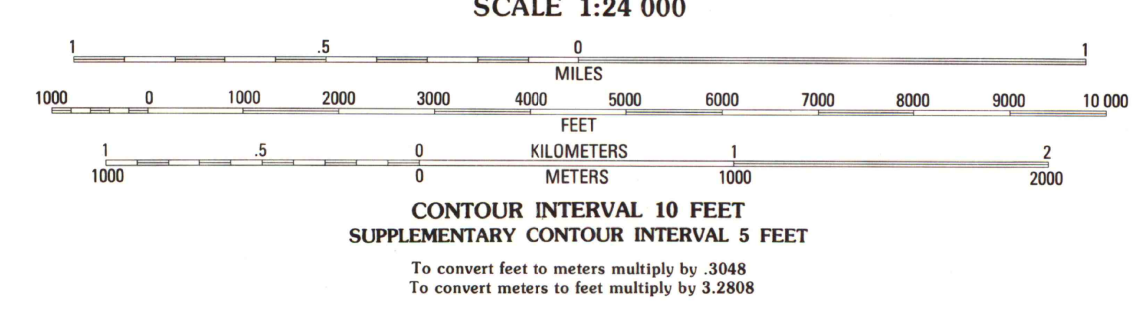
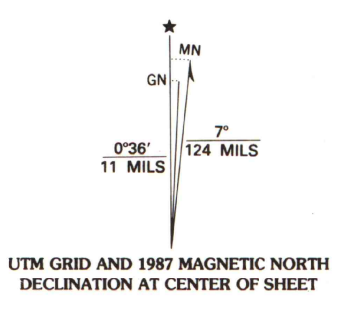


UNITED STATES
DEPARTMENT OF THE INTERIOR
GEOLOGICAL SURVEY

RYAN QUADRANGLE
OKLAHOMA-TEXAS
7.5 MINUTE SERIES (TOPOGRAPHIC)
SW 4 RYAN 15' QUADRANGLE

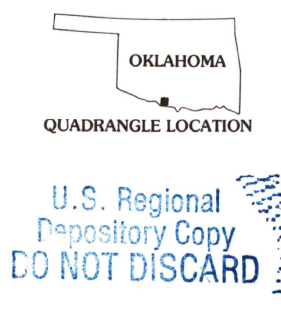


Produced by the United States Geological Survey
Control by USGS and NOS/NOAA
Topography by photogrammetric methods from aerial photographs taken 1960. Revised from aerial photographs taken 1984. Field checked 1987. Map edited 1987.
Projection and 10,000-foot grid ticks: Oklahoma coordinate system, south zone, and Texas coordinate system, north central zone (Lambert conformal conic).
1000-meter Universal Transverse Mercator grid, zone 14 1927 North American Datum
To place on the predicted North American Datum 1983, move the projection lines 6 meters south and 30 meters east as shown by dashed corner ticks
Fine red dashed lines indicate selected fence and field lines where generally visible on aerial photographs. This information is unchecked



ROAD CLASSIFICATION

Primary highway, hard surface	Light-duty road, hard or improved surface
Secondary highway, hard surface	Unimproved road
Interstate Route	U. S. Route
	State Route



A.H. ROBINSON
MAP LIBRARY
APR 22 1988
University of Wisconsin
Madison

RYAN, OKLA.-TEX.
SW 4 RYAN 15' QUADRANGLE
34097-AS-TF-024
1987
DMA 6452 III SW-SERIES V883

THIS MAP COMPLIES WITH NATIONAL MAP ACCURACY STANDARDS
FOR SALE BY U. S. GEOLOGICAL SURVEY, DENVER, COLORADO 80225, OR RESTON, VIRGINIA 22092
AND OKLAHOMA GEOLOGICAL SURVEY, NORMAN, OKLAHOMA 73069
A FOLDER DESCRIBING TOPOGRAPHIC MAPS AND SYMBOLS IS AVAILABLE ON REQUEST