

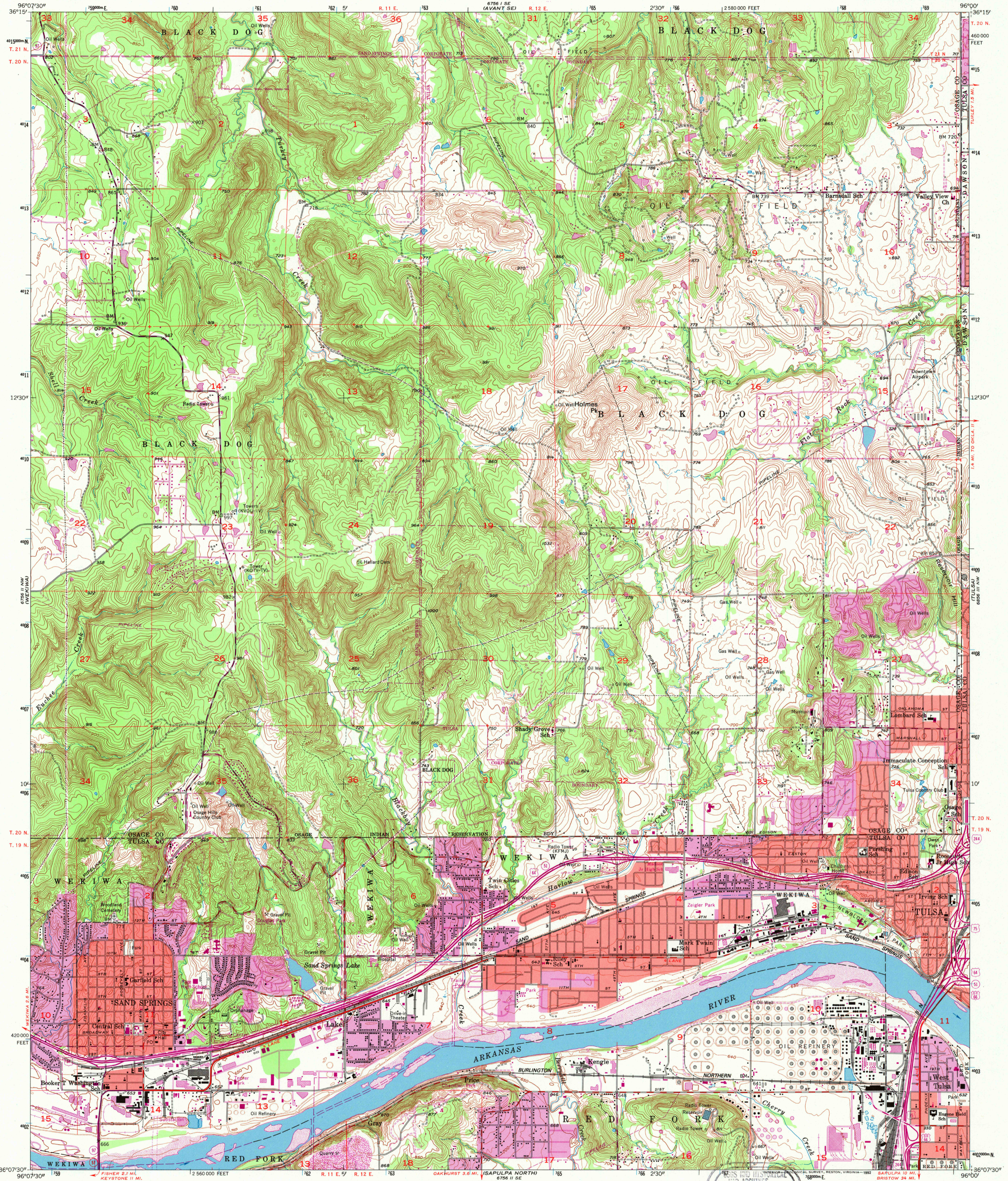
5000 FT SW
4000 FT SW

UNITED STATES
DEPARTMENT OF THE INTERIOR
GEOLOGICAL SURVEY

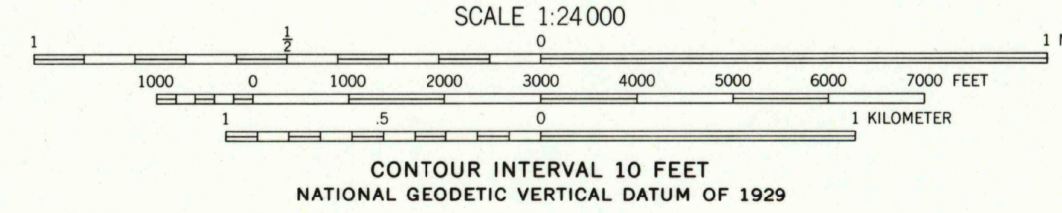
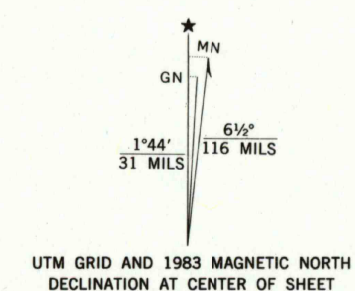
TULSA METROPOLITAN AREA
PLANNING COMMISSION

SAND SPRINGS QUADRANGLE
OKLAHOMA
7.5 MINUTE SERIES (TOPOGRAPHIC)

5000 FT SW
4000 FT SW



Mapped, edited, and published by the Geological Survey
Control by USGS, USC&GS, USCE, and Oklahoma Geodetic Survey
Topography from aerial photographs by Kelsh plotter
Aerial photographs taken 1955. Field check 1956
Polyconic projection. 1927 North American datum
10,000-foot grid based on Oklahoma coordinate system, north zone
1000-meter Universal Transverse Mercator grid ticks,
zone 14, shown in blue
Red tint indicates areas in which only
landmark buildings are shown
The difference between 1927 North American Datum and North American
Datum of 1983 (NAD 83) for 7.5-minute intersections is given in USGS
Bulletin 1875. The NAD 83 is shown by dashed corner ticks
There may be private inholdings within the boundaries of
the National or State reservations shown on this map



CONTOUR INTERVAL 10 FEET
NATIONAL GEODETIC VERTICAL DATUM OF 1929
THIS MAP COMPLIES WITH NATIONAL MAP ACCURACY STANDARDS
FOR SALE BY U.S. GEOLOGICAL SURVEY, DENVER, COLORADO 80225, OR RESTON, VIRGINIA 22092
AND OKLAHOMA GEOLOGICAL SURVEY, NORMAN, OKLAHOMA 73069
A FOLDER DESCRIBING TOPOGRAPHIC MAPS AND SYMBOLS IS AVAILABLE ON REQUEST

NOV 30 1997
REC'D FILE COPY



ROAD CLASSIFICATION

Heavy-duty	Light-duty
Medium-duty	Unimproved dirt
U.S. Route	State Route
	Interstate Route

SAND SPRINGS, OKLA.
36096-B1-TF-024
1956
PHOTOREVISED 1983
DMA 6756 II NE-SERIES V883

Revisions shown in purple compiled from aerial
photographs taken 1981 and other sources
This information not field checked. Map edited 1983
Purple tint indicates extension of urban area

