

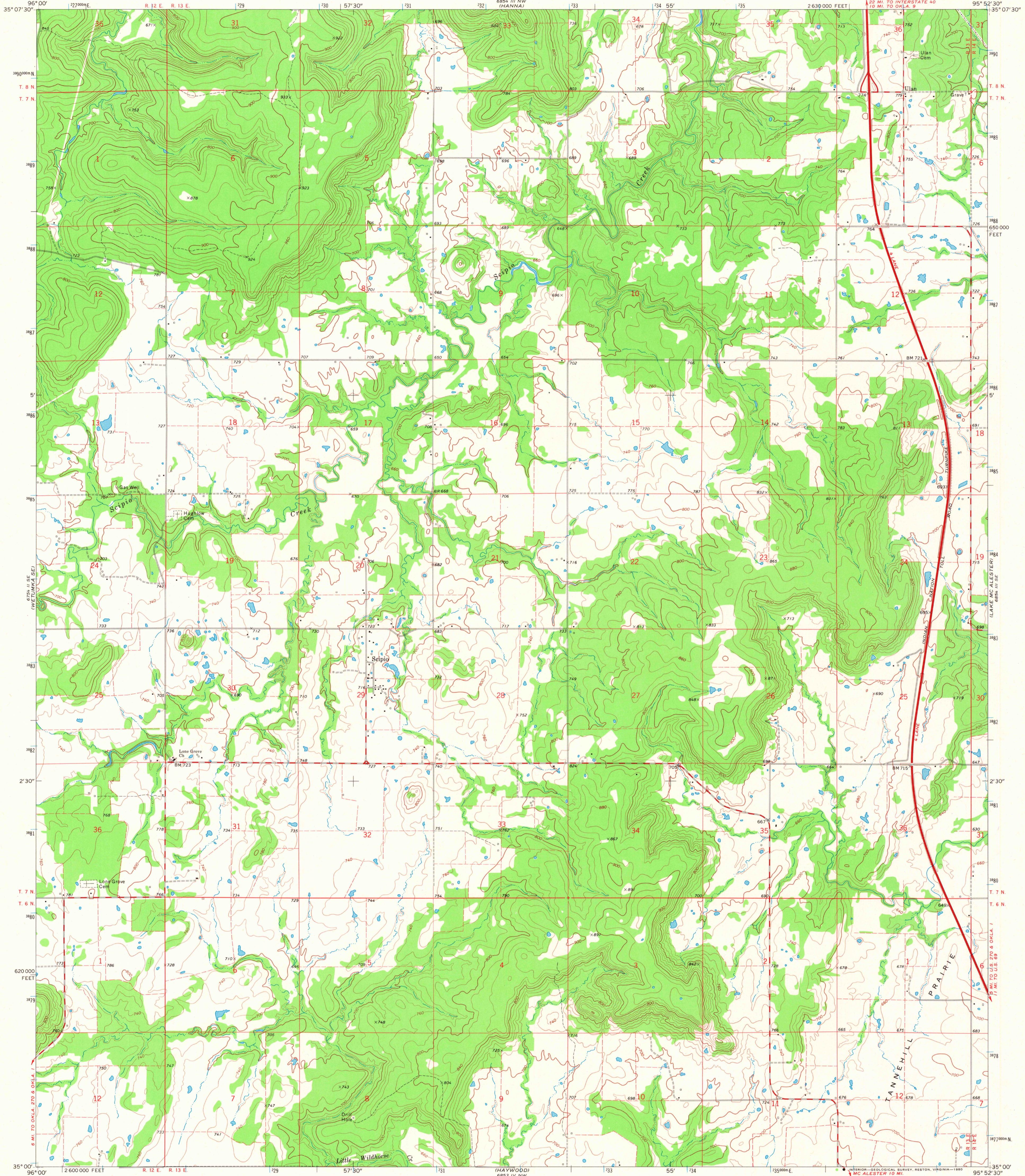
6854 III NW  
(CARSON)

UNITED STATES  
DEPARTMENT OF THE INTERIOR  
GEOLOGICAL SURVEY

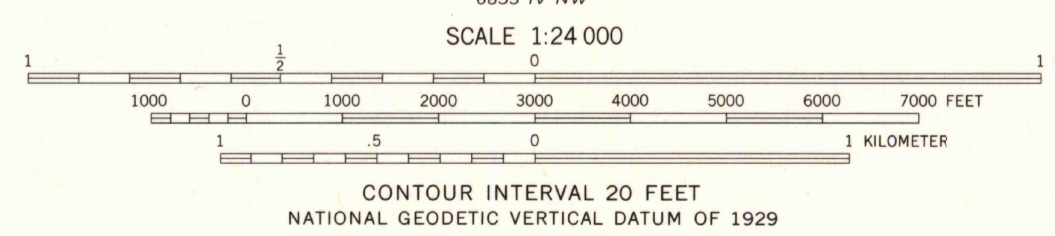
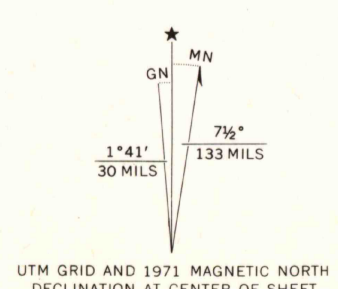
STATE OF OKLAHOMA

SCIPIO QUADRANGLE  
OKLAHOMA—PITTSBURG CO.  
7.5 MINUTE SERIES (TOPOGRAPHIC)

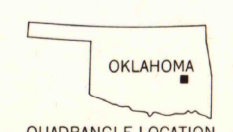
6854 III NE  
(INDIANOLA)



Mapped, edited, and published by the Geological Survey in cooperation with the Oklahoma Highway Department, Oklahoma Water Resources Board, and Oklahoma State Soil Conservation Board  
Control by USGS and USC&GS  
Topography by photogrammetric methods from aerial photographs taken 1966. Field checked 1971  
Polyconic projection. 1927 North American datum 10,000-foot grid based on Oklahoma coordinate system, south zone 1000-meter Universal Transverse Mercator grid ticks, zone 15, shown in blue  
To place on the predicted North American Datum 1983 move the projection lines 5 meters south and 24 meters east as shown by dashed corner ticks  
Map photoinspected 1977  
No major culture or drainage changes observed



CONTOUR INTERVAL 20 FEET  
NATIONAL GEODETIC VERTICAL DATUM OF 1929



ROAD CLASSIFICATION

Primary highway, hard surface	Light-duty road, hard or improved surface
Secondary highway, hard surface	Unimproved road
Interstate Route	U. S. Route
	State Route

USGS Historical File Topographic Division  
SCIPIO, OKLA. N3500-W9552.5/7.5  
1971 PHOTOINSPECTED 1977  
AMS 6854 III SW—SERIES V883

OCT - 3 1980

THIS MAP COMPLIES WITH NATIONAL MAP ACCURACY STANDARDS FOR SALE BY U. S. GEOLOGICAL SURVEY, DENVER, COLORADO 80225, OR RESTON, VIRGINIA 22092 AND BY THE OKLAHOMA GEOLOGICAL SURVEY, NORMAN, OKLAHOMA 73069  
A FOLDER DESCRIBING TOPOGRAPHIC MAPS AND SYMBOLS IS AVAILABLE ON REQUEST