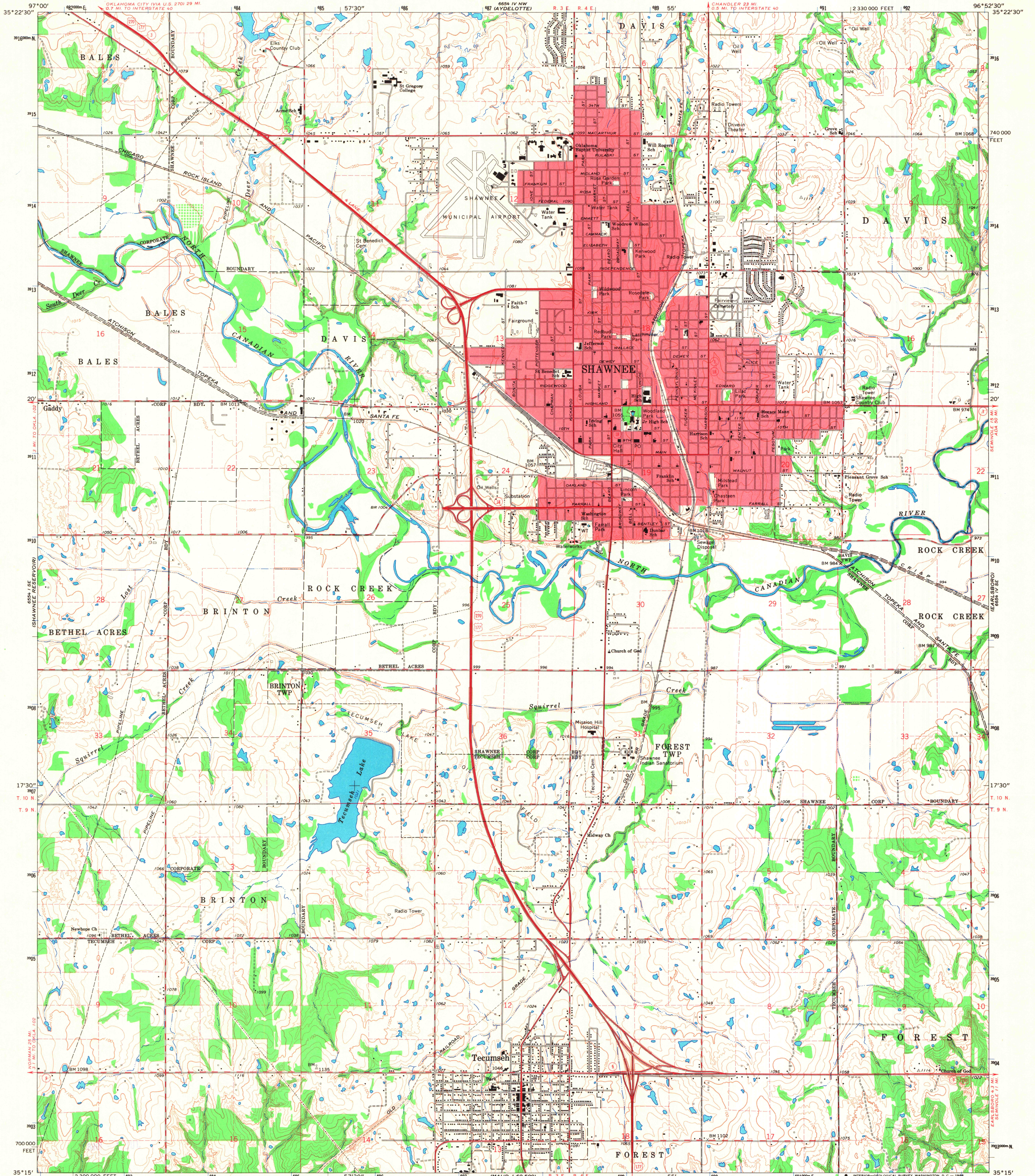
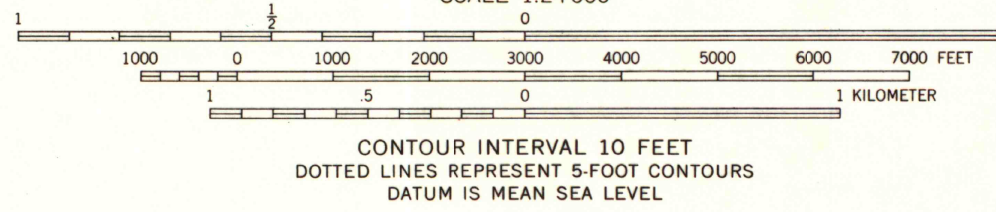
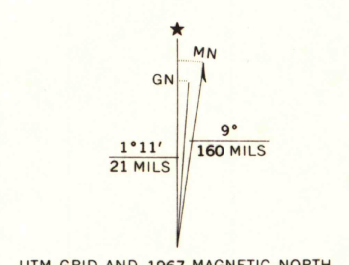


UNITED STATES
DEPARTMENT OF THE INTERIOR
GEOLOGICAL SURVEY

SHAWNEE QUADRANGLE
OKLAHOMA—POTTAWATOMIE CO.
7.5 MINUTE SERIES (TOPOGRAPHIC)
SW/4 SHAWNEE 15' QUADRANGLE



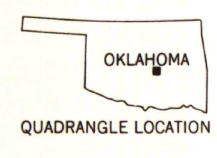
Mapped, edited, and published by the Geological Survey
Control by USGS and USC&GS
Topography by photogrammetric methods from aerial photographs taken 1964. Field checked 1966-67
Polyconic projection. 1927 North American datum
10,000-foot grid based on Oklahoma coordinate system, south zone
1000-meter Universal Transverse Mercator grid ticks, zone 14, shown in blue
Red tint indicates areas in which only landmark buildings are shown
Fine red dashed lines indicate selected fence and field lines where generally visible on aerial photographs. This information is unchecked



MAP AND AIR PHOTO LIBRARY
University of Wisconsin

ROAD CLASSIFICATION

Heavy-duty	Light-duty
Medium-duty	Unimproved dirt
U.S. Route	State Route



SHAWNEE, OKLA.
SW/4 SHAWNEE 15' QUADRANGLE
N3515—W9652.5/7.5

THIS MAP COMPLIES WITH NATIONAL MAP ACCURACY STANDARDS
FOR SALE BY U.S. GEOLOGICAL SURVEY, DENVER, COLORADO 80225, OR WASHINGTON, D.C. 20242
A FOLDER DESCRIBING TOPOGRAPHIC MAPS AND SYMBOLS IS AVAILABLE ON REQUEST

1967
AMS 6654 IV SW—SERIES V883