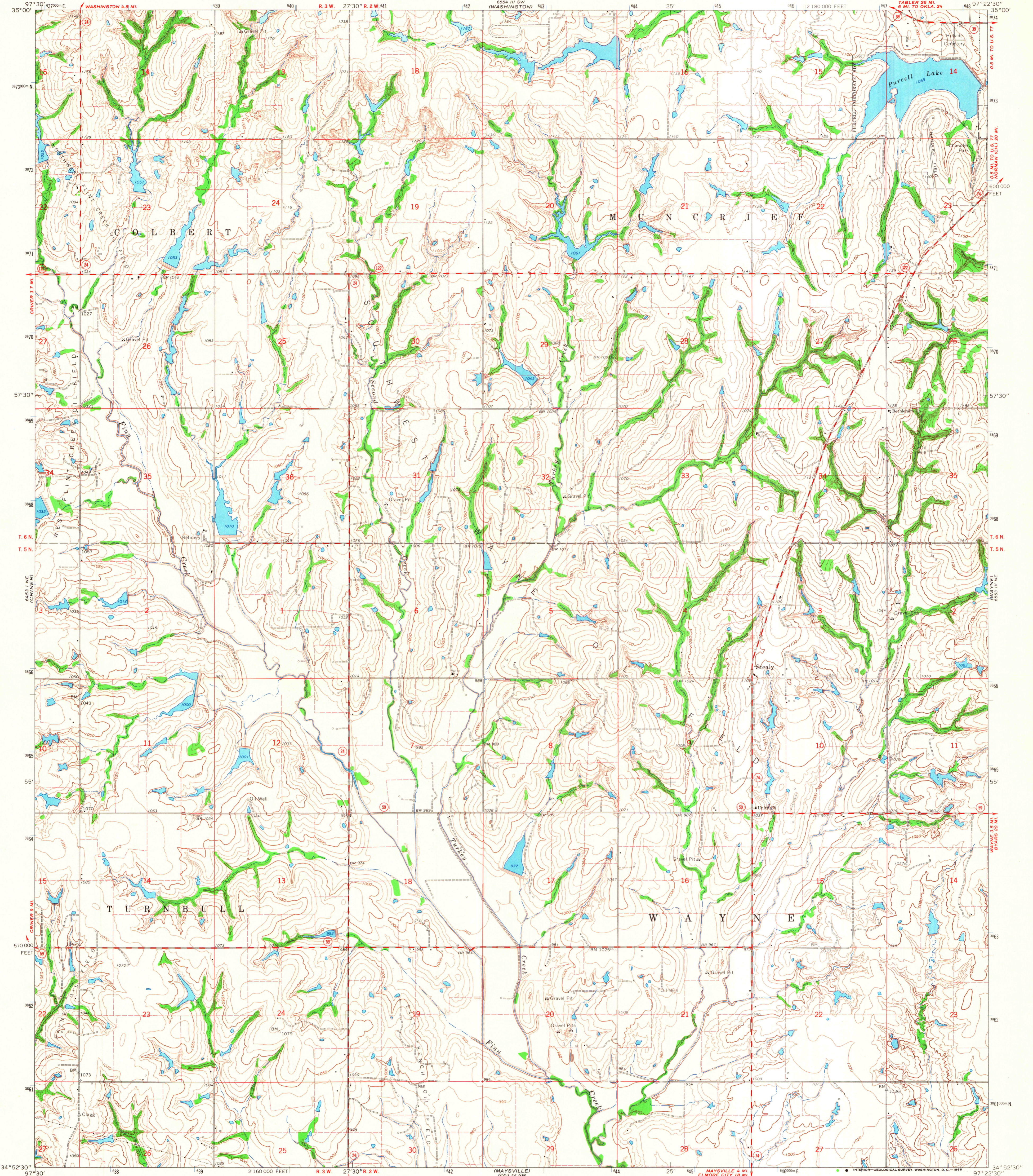


644 11 E
100 11 E

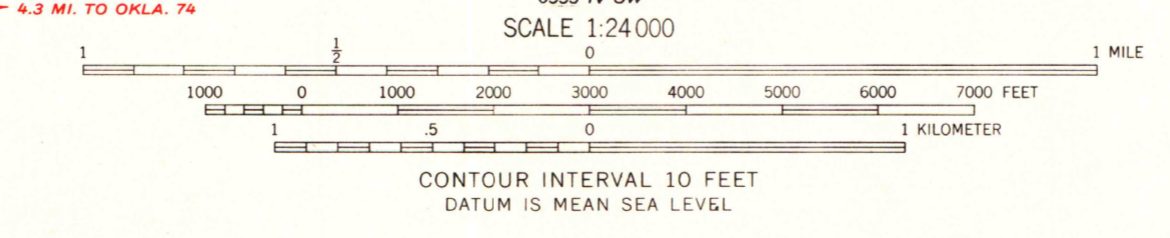
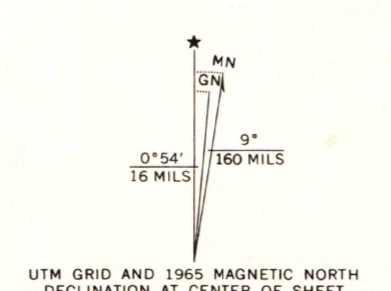
UNITED STATES
DEPARTMENT OF THE INTERIOR
GEOLOGICAL SURVEY

STEALY QUADRANGLE
OKLAHOMA—MCCLAIN CO.
7.5 MINUTE SERIES (TOPOGRAPHIC)

6554 11 SW
(WASHINGTON)
6554 11 SW
(WASHINGTON)



Mapped, edited, and published by the Geological Survey
Control by USGS, USC&GS, and Oklahoma Geological Survey
Topography by photogrammetric methods from aerial
photographs taken 1962. Field checked 1965.
Polyconic projection 1927 North American datum
10,000-foot grid based on Oklahoma coordinate system, south zone
1000-meter Universal Transverse Mercator grid ticks,
zone 14, shown in blue
Fine red dashed lines indicate selected fence and field lines where
generally visible on aerial photographs. This information is unchecked



ROAD CLASSIFICATION
Medium-duty ——— Light-duty ———
Unimproved dirt - - - - -
State Route ○

THIS MAP COMPLIES WITH NATIONAL MAP ACCURACY STANDARDS
FOR SALE BY U.S. GEOLOGICAL SURVEY, DENVER, COLORADO 80225, OR WASHINGTON, D.C. 20242
A FOLDER DESCRIBING TOPOGRAPHIC MAPS AND SYMBOLS IS AVAILABLE ON REQUEST

STEALY, OKLA.
N3452.5—W9722.5/7.5

MAP AND AIR PHOTO LIBRARY
University of Wisconsin

1965
AMS 6553 IV NW—SERIES W883