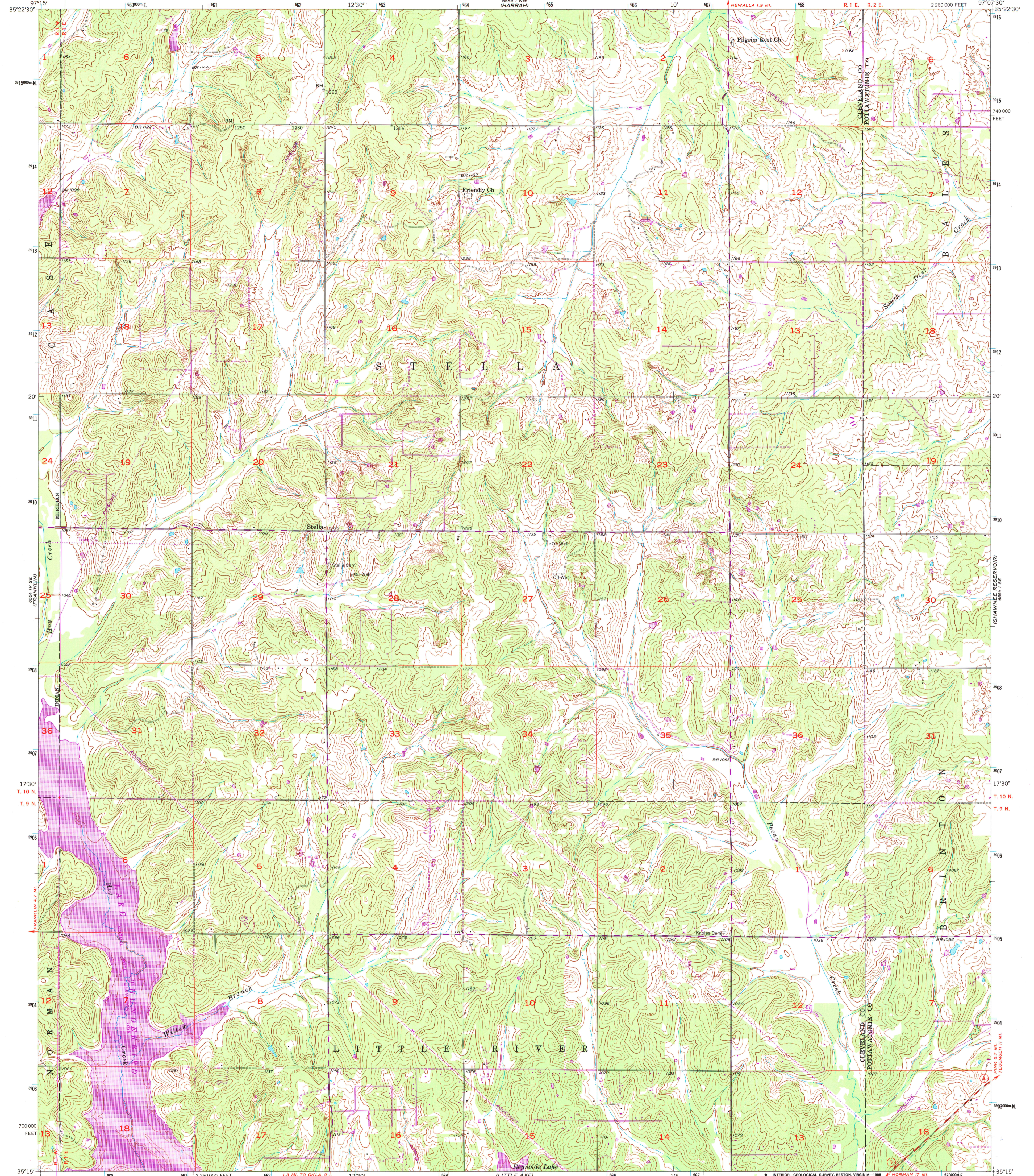


6554 I NW (HARRAH)

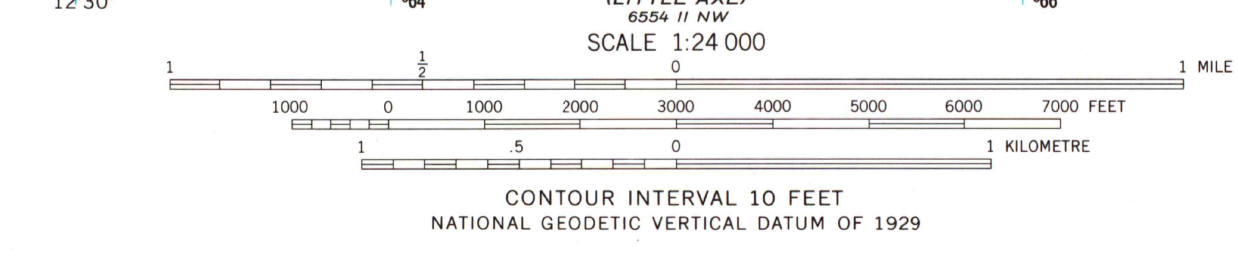
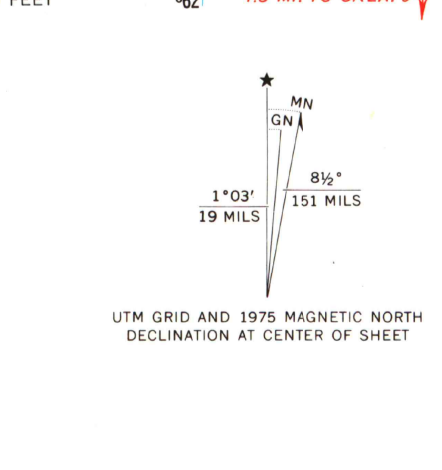
UNITED STATES
DEPARTMENT OF THE INTERIOR
GEOLOGICAL SURVEY

STELLA QUADRANGLE
OKLAHOMA
7.5 MINUTE SERIES (TOPOGRAPHIC)

6554 I NW (HARRAH)



Mapped, edited, and published by the Geological Survey
Control by USGS, USC&GS, and Oklahoma Geodetic Survey
Topography from aerial photographs by photogrammetric methods
Aerial photographs taken 1954. Field check 1956
Polyconic projection. 1927 North American datum
10,000-foot grid based on Oklahoma coordinate system, south zone
1000-metre Universal Transverse Mercator grid ticks,
zone 14, shown in blue
Revisions shown in purple compiled from aerial photographs
taken 1969 and 1975. Woodland areas recompiled 1969.
This information not field checked
Map photoinspected 1981
No major culture or drainage changes observed



ROAD CLASSIFICATION
Medium-duty ——— Light-duty ———
Unimproved dirt - - - - -
State Route ○
Oklahoma
QUADRANGLE LOCATION
STELLA, OKLA.
35097-C2-TF-025
PHOTOINSPECTED 1981
1956
PHOTOREVISED 1969 AND 1975
DMA 6554 I SW - SERIES V883

A.M. ROBINSON
MAP LIBRARY
NOV 8 1988
University of Wisconsin
Madison