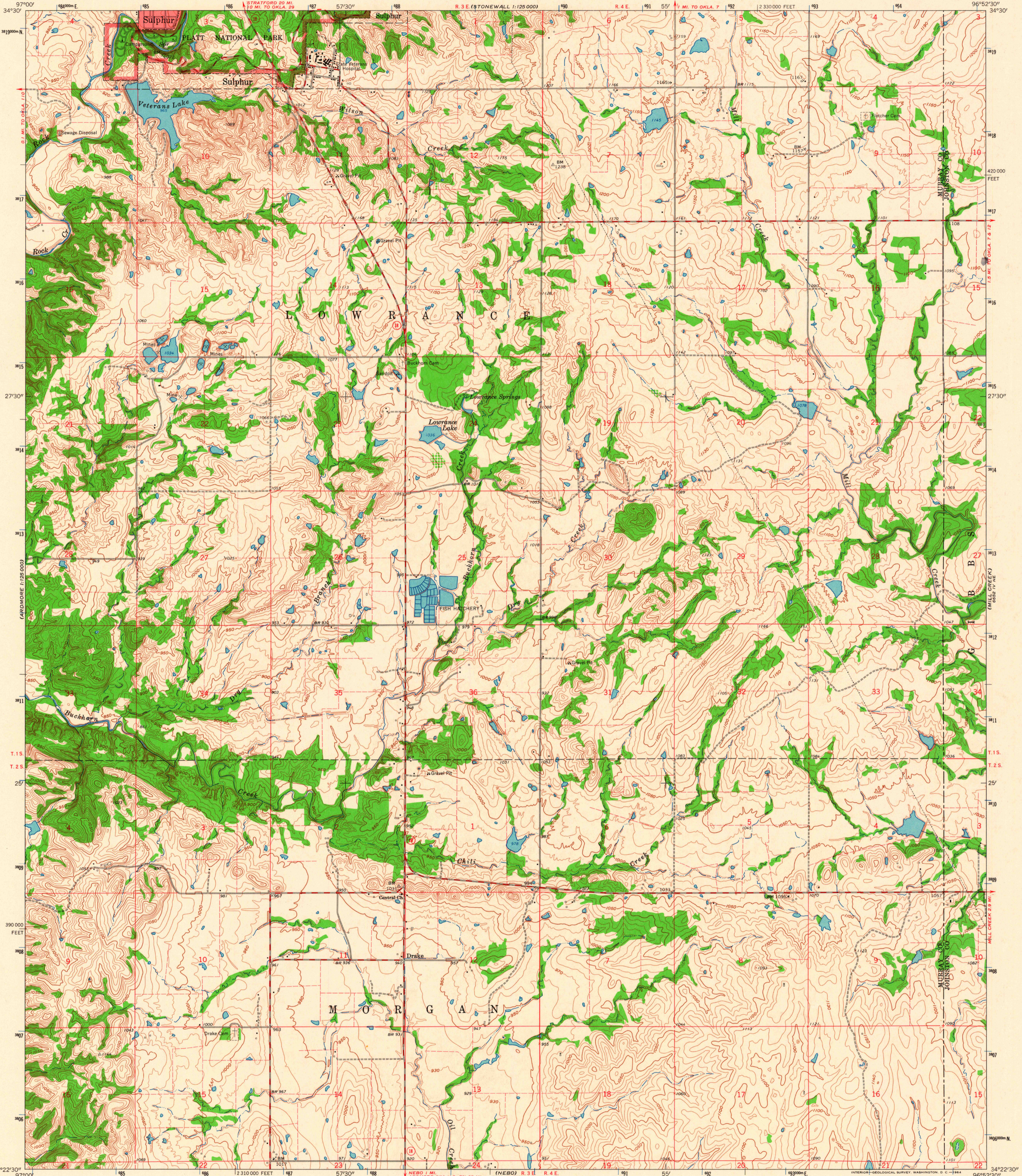


PAULS VALLEY
1:125,000

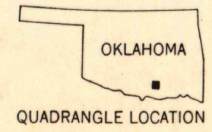
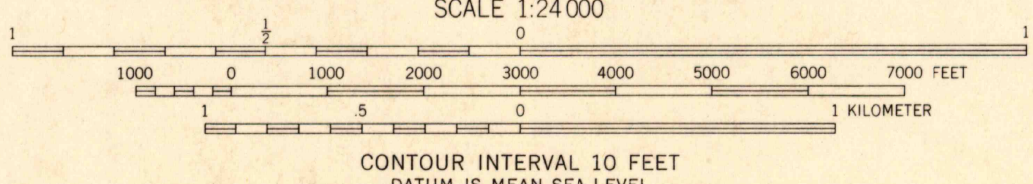
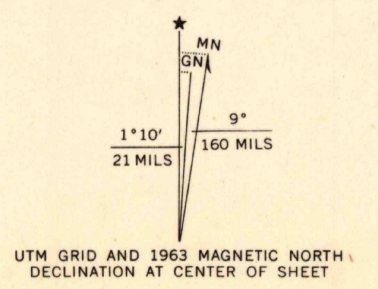
STONEWALL 1:125,000

UNITED STATES
DEPARTMENT OF THE INTERIOR
GEOLOGICAL SURVEY

SULPHUR SOUTH QUADRANGLE
OKLAHOMA
7.5 MINUTE SERIES (TOPOGRAPHIC)



Mapped, edited, and published by the Geological Survey
Control by USGS and USC&GS
Topography by photogrammetric methods from aerial
photographs taken 1960. Field checked 1963
Polyconic projection. 1927 North American datum
10,000-foot grid based on Oklahoma coordinate system, south zone
1000-meter Universal Transverse Mercator grid ticks,
zone 14, shown in blue
Red tint indicates area in which only landmark buildings are shown
Fine red dashed lines indicate selected fence and field lines where
generally visible on aerial photographs. This information is unchecked



ROAD CLASSIFICATION

Medium-duty	Light-duty
Unimproved dirt	State Route

THIS MAP COMPLIES WITH NATIONAL MAP ACCURACY STANDARDS
FOR SALE BY U. S. GEOLOGICAL SURVEY, DENVER 25, COLORADO OR WASHINGTON 25, D. C.
A FOLDER DESCRIBING TOPOGRAPHIC MAPS AND SYMBOLS IS AVAILABLE ON REQUEST

USGS
Historical File
Topographic Division

SULPHUR SOUTH, OKLA.
N3422.5-W9552.5/7.5

1963
AMS 6552 IV NW-SERIES V883

2690

APR 28 1964