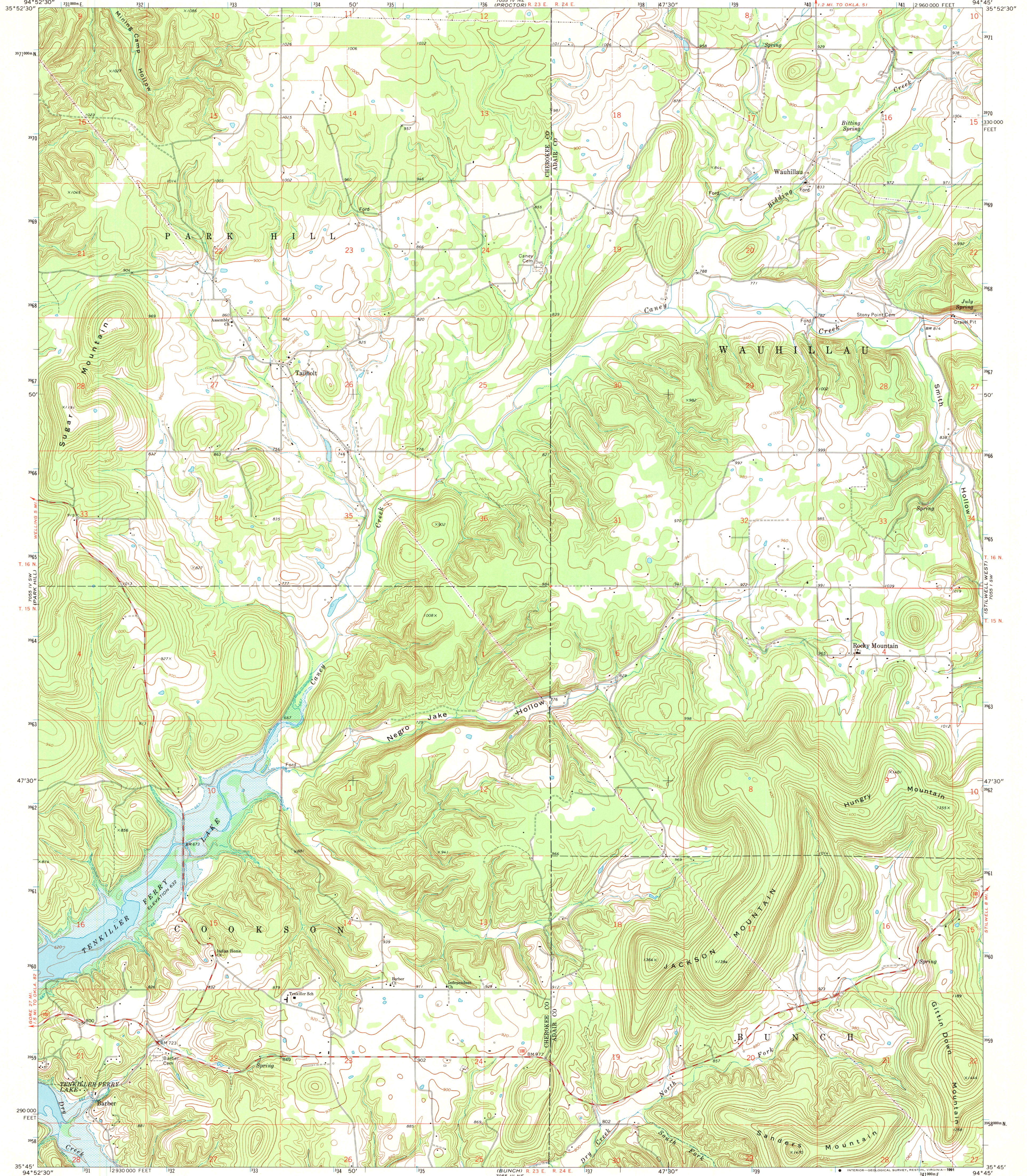


UNITED STATES
DEPARTMENT OF THE INTERIOR
GEOLOGICAL SURVEY

TAILHOLT QUADRANGLE
OKLAHOMA
7.5 MINUTE SERIES (TOPOGRAPHIC)



Mapped, edited, and published by the Geological Survey
Control by USGS and USC&GS

Topography by photogrammetric methods from aerial
photographs taken 1971. Field checked 1972

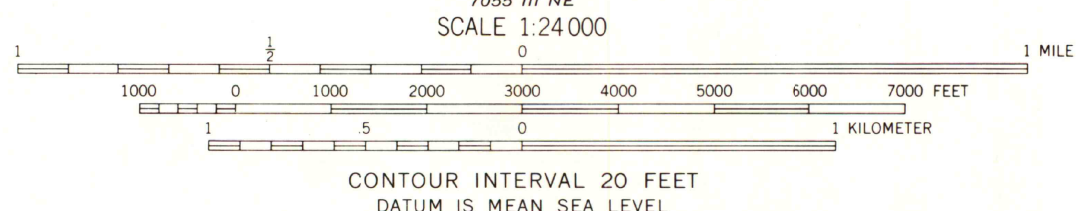
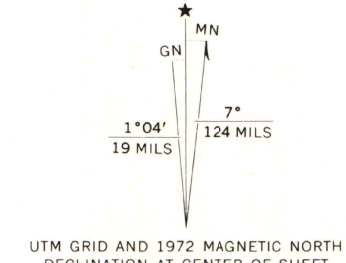
Underwater contours in Tenkiller Ferry Lake
from USCE map dated 1940

Projection and 10,000-foot grid ticks: Oklahoma coordinate
system, north zone (Lambert conformal conic)
1000-meter Universal Transverse Mercator grid ticks,
zone 15, shown in blue. 1927 North American datum

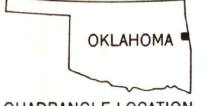
Areas covered by dashed light-blue pattern
are subject to controlled inundation

Fine red dashed lines indicate selected fence and field lines where
generally visible on aerial photographs. This information is unchecked

Map photoinspected 1980
No major culture or drainage changes observed



THIS MAP COMPLIES WITH NATIONAL MAP ACCURACY STANDARDS
FOR SALE BY U. S. GEOLOGICAL SURVEY, DENVER, COLORADO 80225, OR RESTON, VIRGINIA 22092
AND BY THE OKLAHOMA GEOLOGICAL SURVEY, NORMAN, OKLAHOMA 73069
A FOLDER DESCRIBING TOPOGRAPHIC MAPS AND SYMBOLS IS AVAILABLE ON REQUEST



ROAD CLASSIFICATION

Primary highway, hard surface	Light-duty road, hard or improved surface
Secondary highway, hard surface	Unimproved road
Interstate Route	U. S. Route
	State Route

U.S. Regional
Depository Copy
DO NOT DISCARD

TAILHOLT, OKLA.
N3545-W9445/7.5

1972
PHOTOINSPECTED 1980
AMS 7055 IV SE-SERIES V883

University of Wisconsin
Madison
AH. FORINSON
MAP LIBRARY
NOV 19 1991