

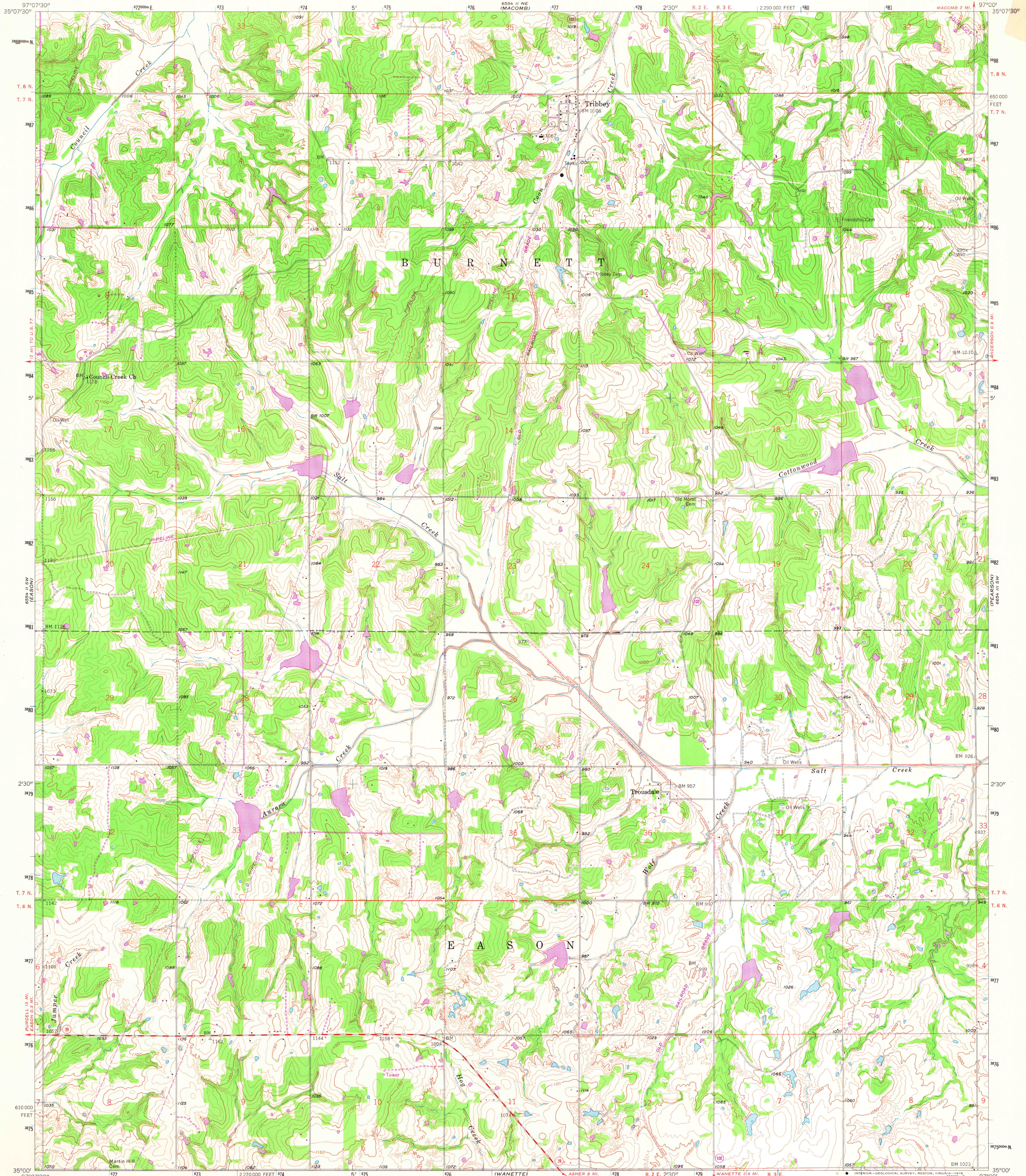
6554 II NW
LITTLE AXE

UNITED STATES
DEPARTMENT OF THE INTERIOR
GEOLOGICAL SURVEY

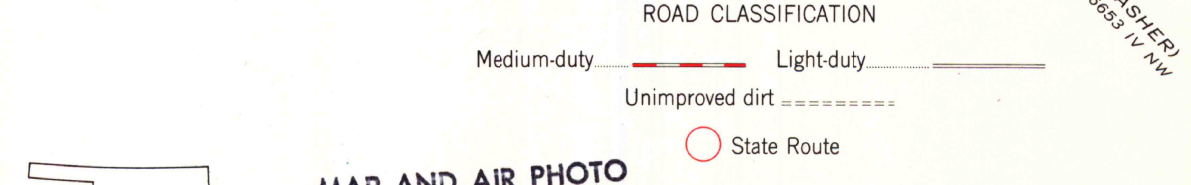
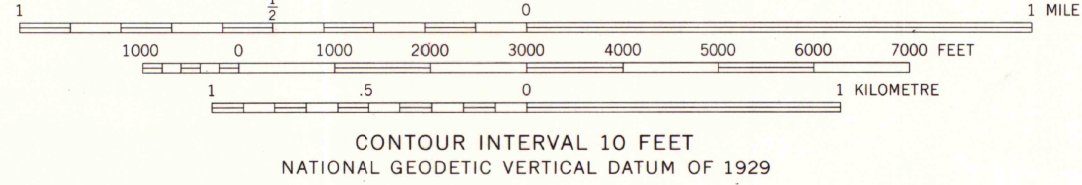
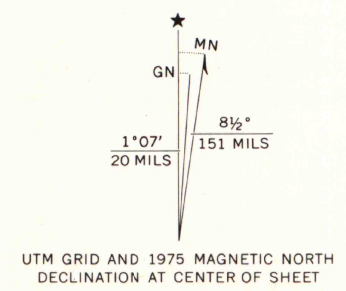
CITY OF OKLAHOMA CITY
DEPARTMENT OF PUBLIC WORKS

TRIBBEY QUADRANGLE
OKLAHOMA-POTTAWATOMIE CO.
7.5 MINUTE SERIES (TOPOGRAPHIC)

6554 II NW
(BROOKSVILLE)



Maped, edited, and published by the Geological Survey
Control by USGS and USC&GS
Topography from aerial photographs by photogrammetric methods
Aerial photographs taken 1957. Field check 1958
Polyconic projection. 1927 North American datum
10,000-foot grid based on Oklahoma coordinate system, south zone
1000-metre Universal Transverse Mercator grid ticks,
zone 14, shown in blue
Revisions shown in purple compiled from aerial photographs
taken 1975. This information not field checked



THIS MAP COMPLIES WITH NATIONAL MAP ACCURACY STANDARDS
FOR SALE BY U. S. GEOLOGICAL SURVEY, DENVER, COLORADO 80225, OR RESTON, VIRGINIA 22092
AND BY THE OKLAHOMA GEOLOGICAL SURVEY, NORMAN, OKLAHOMA 73069
A FOLDER DESCRIBING TOPOGRAPHIC MAPS AND SYMBOLS IS AVAILABLE ON REQUEST

MAP AND AIR PHOTO
LIBRARY
DEC 28 1976
University of Wisconsin
Madison

TRIBBEY, OKLA.
N3500-W9700/7.5
1958
PHOTOREVISED 1975
AMS 6554 II SE-SERIES V883

PROSEDALE
6553 NW

6553 NW
LITTLE AXE