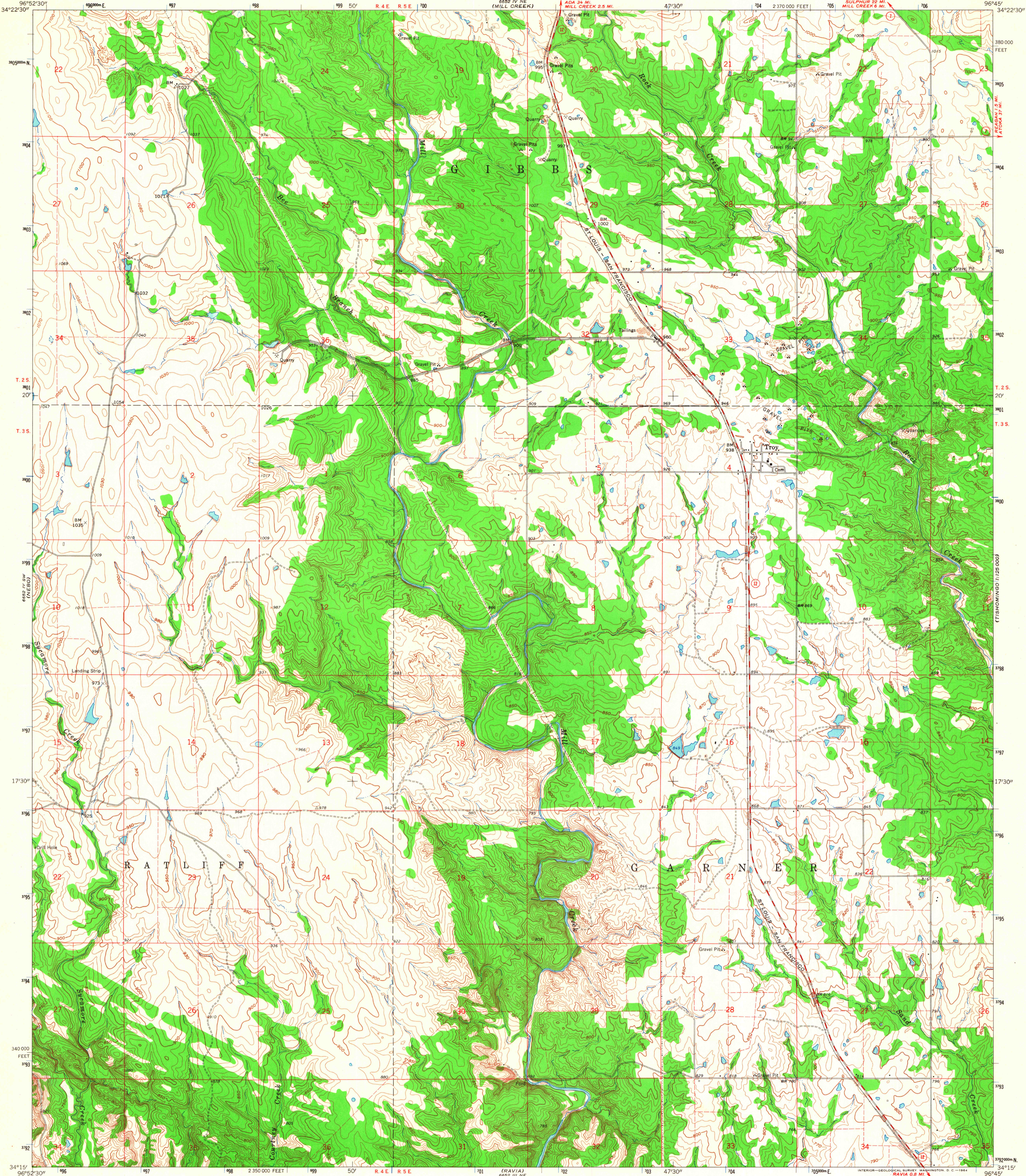


UNITED STATES  
DEPARTMENT OF THE INTERIOR  
GEOLOGICAL SURVEY

TROY QUADRANGLE  
OKLAHOMA-JOHNSTON CO.  
7.5 MINUTE SERIES (TOPOGRAPHIC)



Mapped, edited, and published by the Geological Survey

Control by USGS, USC&GS, and Oklahoma Geological Survey

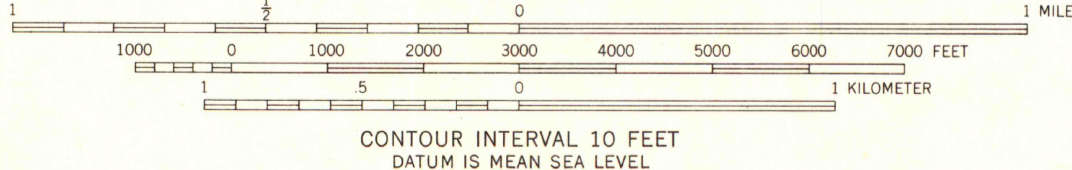
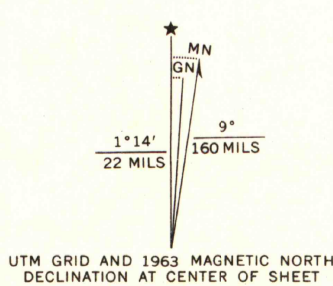
Topography by photogrammetric methods from aerial photographs taken 1960. Field checked 1963

Polyconic projection. 1927 North American datum

10,000-foot grid based on Oklahoma coordinate system, south zone

1000-meter Universal Transverse Mercator grid ticks, zone 14, shown in blue

Fine red dashed lines indicate selected fence and field lines where generally visible on aerial photographs. This information is unchecked



CONTOUR INTERVAL 10 FEET  
DATUM IS MEAN SEA LEVEL



ROAD CLASSIFICATION  
Medium-duty ——— Light-duty ———  
Unimproved dirt ———  
State Route —○—

TROY, OKLA.  
N3415—W9645/7.5

1963

AMS 6652 IV SE—SERIES V883

MAP AND AIR PHOTO LIBRARY  
University of Wisconsin

THIS MAP COMPLIES WITH NATIONAL MAP ACCURACY STANDARDS  
FOR SALE BY U. S. GEOLOGICAL SURVEY, DENVER 25, COLORADO OR WASHINGTON 25, D. C.  
A FOLDER DESCRIBING TOPOGRAPHIC MAPS AND SYMBOLS IS AVAILABLE ON REQUEST