

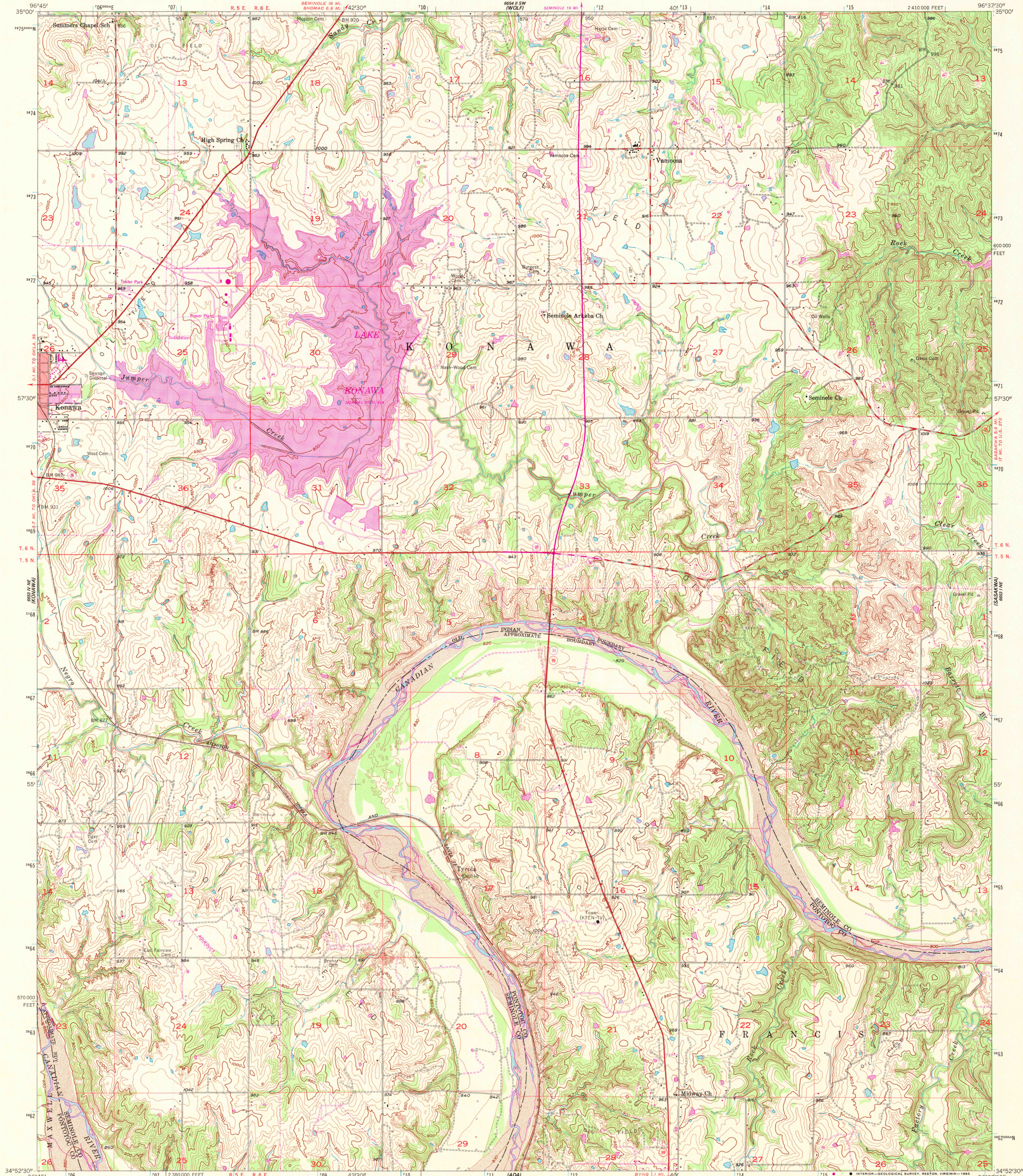
6653 1 NW
1:250,000

UNITED STATES
DEPARTMENT OF THE INTERIOR
GEOLOGICAL SURVEY

CITY OF OKLAHOMA CITY
DEPARTMENT OF PUBLIC WORKS

VAMOOSA QUADRANGLE
OKLAHOMA
7.5 MINUTE SERIES (TOPOGRAPHIC)

6653 1 NW
1:250,000

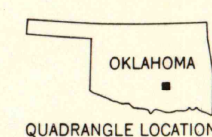


Mapped, edited, and published by the Geological Survey
Control by USGS and USC&GS
Topography from aerial photographs by photogrammetric methods
Aerial photographs taken 1957. Field check 1958
Polyconic projection. 1927 North American datum
10,000-foot grid based on Oklahoma coordinate system, south zone
1000-meter Universal Transverse Mercator grid ticks,
zone 14, shown in blue
Red tint indicates area in which only
landmark buildings are shown
Revisions shown in purple compiled from
aerial photographs taken 1976 and other
source data. This information not field checked.
Map edited 1979
Purple tint indicates extension of urban areas

UTM GRID AND 1979 MAGNETIC NORTH
DECLINATION AT CENTER OF SHEET
1:19' 23 MILS
7' 124 MILS
To place on the predicted North American Datum 1983
move the projection lines 5 meters south and
26 meters east as shown by dashed corner ticks

SCALE 1:24 000
1 000 0 1000 2000 3000 4000 5000 6000 7000 FEET
1 0 5 0 1 KILOMETER
CONTOUR INTERVAL 10 FEET
NATIONAL GEODETIC VERTICAL DATUM OF 1929

THIS MAP COMPLIES WITH NATIONAL MAP ACCURACY STANDARDS
FOR SALE BY U.S. GEOLOGICAL SURVEY, DENVER, COLORADO 80225, OR RESTON, VIRGINIA 22092
AND BY THE OKLAHOMA GEOLOGICAL SURVEY, NORMAN, OKLAHOMA 73069
A FOLDER DESCRIBING TOPOGRAPHIC MAPS AND SYMBOLS IS AVAILABLE ON REQUEST



ROAD CLASSIFICATION
Heavy-duty ——— Light-duty ———
Medium-duty ——— Unimproved dirt ———
State Route

VAMOOSA, OKLA.
N 3452.5—W 9637.5/7.5
1958
PHOTOREVISED 1979
AMS 6653 1 NW—SERIES V883

RETURN TO:
USGS AND HISTORICAL MAP ARCHIVES

MAR 15 1983

1750