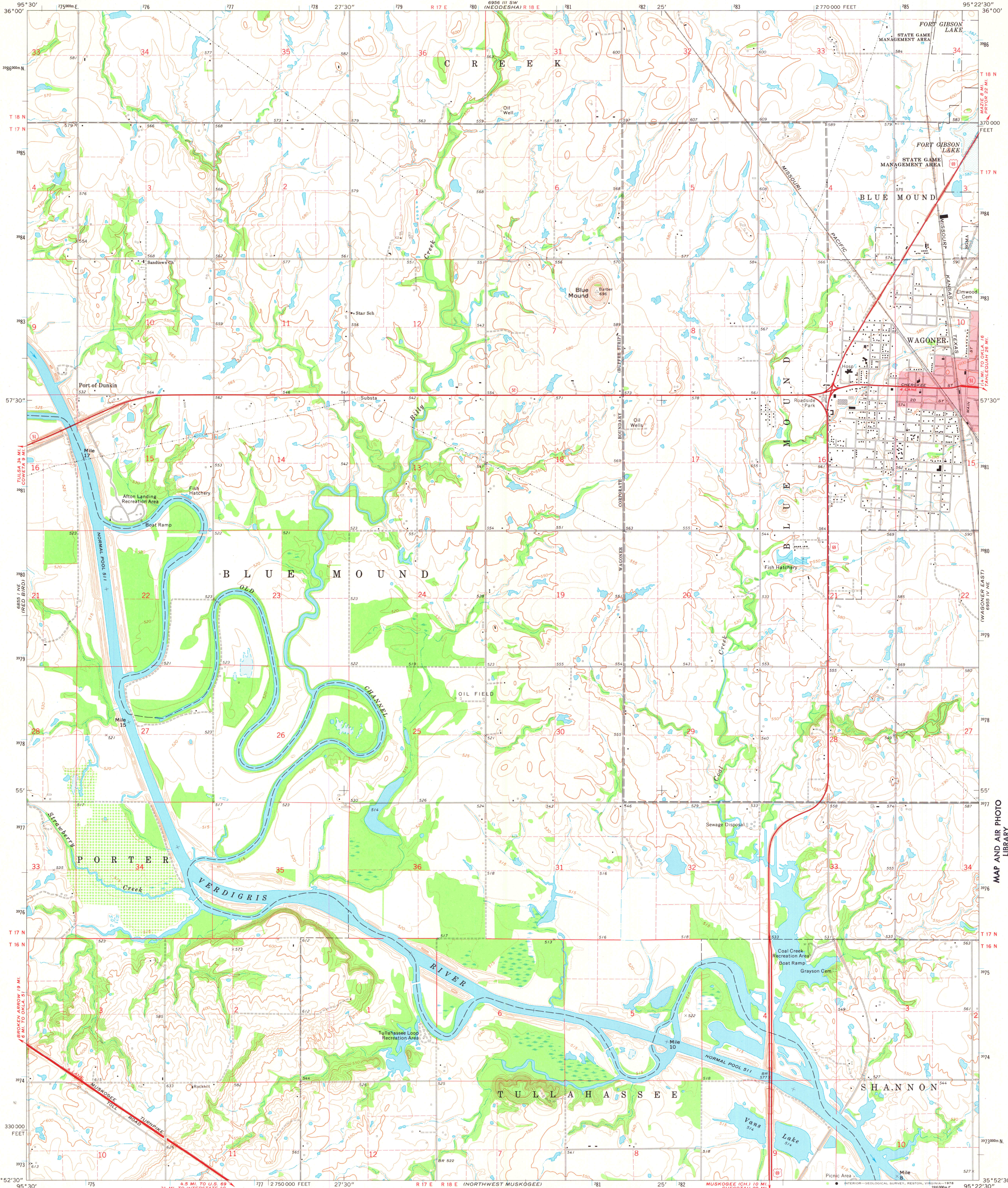
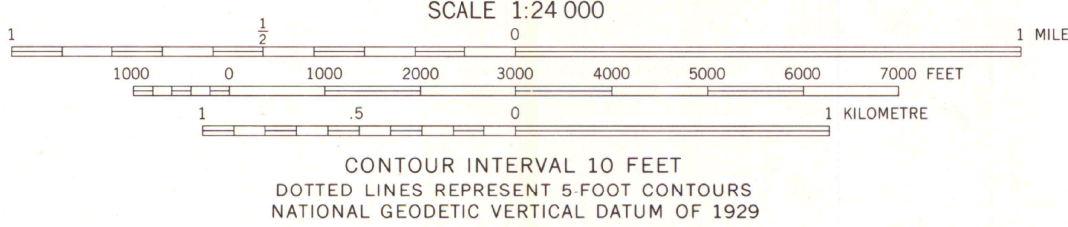
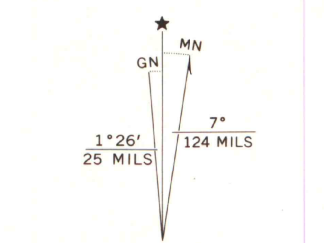


UNITED STATES
DEPARTMENT OF THE INTERIOR
GEOLOGICAL SURVEY

WAGONER WEST QUADRANGLE
OKLAHOMA—WAGONER CO.
7.5 MINUTE SERIES (TOPOGRAPHIC)
NW/4 WAGONER 15' QUADRANGLE



Mapped, edited, and published by the Geological Survey
Control by USGS and NOS/NOAA
Topography by photogrammetric methods from aerial photographs taken 1973. Field checked 1974
Projection and 10,000-foot grid ticks: Oklahoma coordinate system, north zone (Lambert conformal conic)
1000-metre Universal Transverse Mercator grid ticks, zone 15, shown in blue. 1927 North American datum
Red tint indicates area in which only landmark buildings are shown
Areas covered by dashed light-blue pattern are subject to controlled inundation
Fine red dashed lines indicate selected fence and field lines where generally visible on aerial photographs. This information is unchecked



ROAD CLASSIFICATION
Primary highway, hard surface — Light duty road, hard or improved surface
Secondary highway, hard surface — Unimproved road
Interstate Route — U.S. Route — State Route

WAGONER WEST, OKLA.
NW/4 WAGONER 15' QUADRANGLE
N 3552.5—W 9522.5/7.5

1974

AMS 6955 IV NW—SERIES Y883

MAP AND AIR PHOTO LIBRARY

AUG 10 1978

University of Wisconsin
Madison