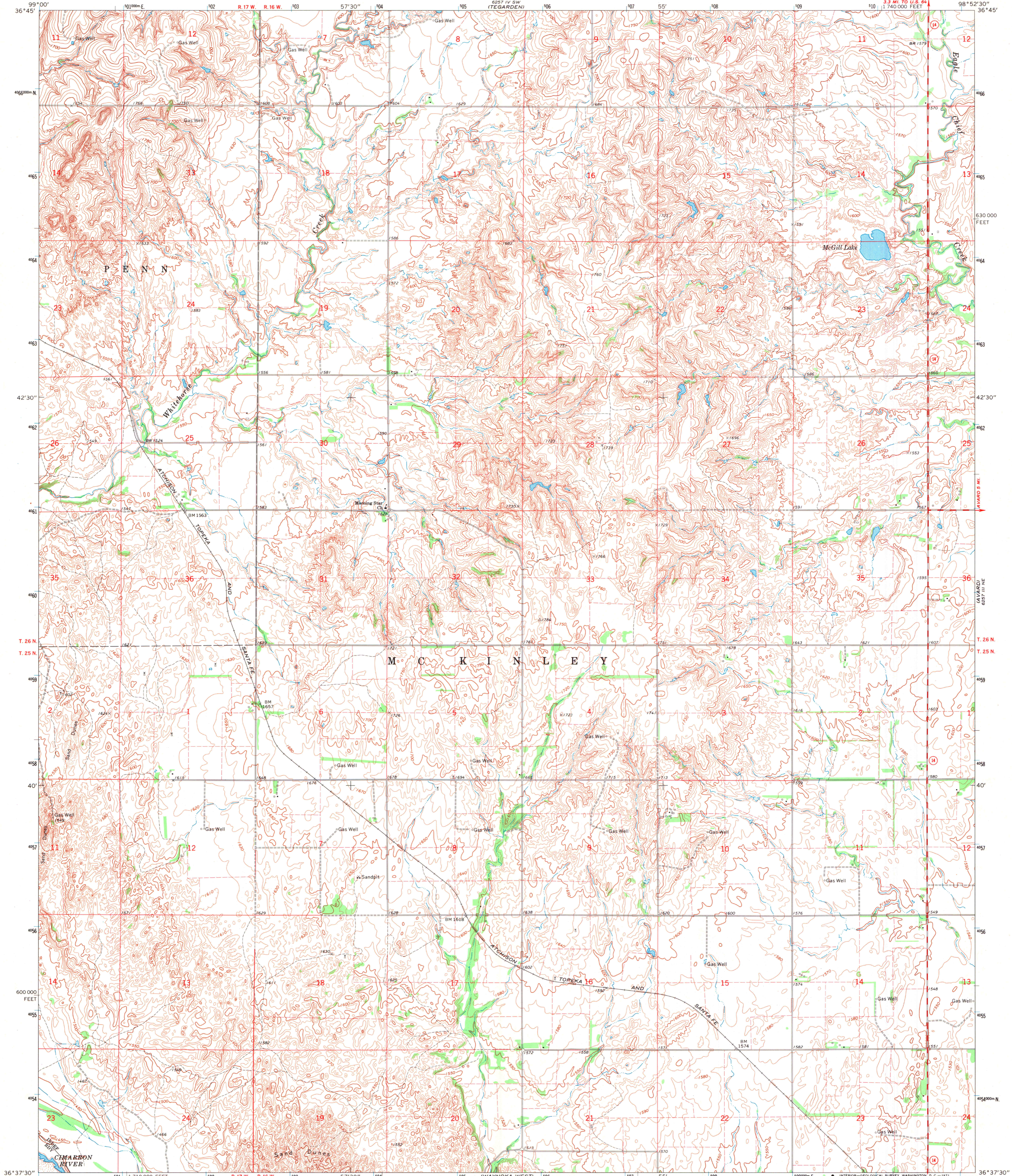
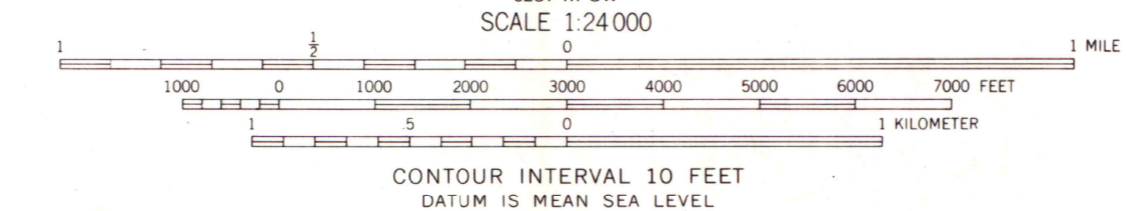
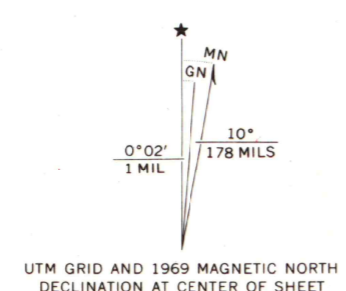


6257 IV SE  
(TEGARDEN 9E)



Mapped, edited, and published by the Geological Survey  
Control by USGS and USC&GS  
Topography by photogrammetric methods from aerial  
photographs taken 1967. Field checked 1969.  
Polyconic projection, 1927 North American datum  
10,000-foot grid based on Oklahoma coordinate system, north zone  
1000-meter Universal Transverse Mercator grid ticks,  
zone 14, shown in blue  
Fine red dashed lines indicate selected fence and field lines where  
generally visible on aerial photographs. This information is unchecked



ROAD CLASSIFICATION  
Secondary highway, all weather, Light-duty road, all weather,  
hard surface improved surface  
Unimproved road, fair or dry  
State Route

THIS MAP COMPLIES WITH NATIONAL MAP ACCURACY STANDARDS  
FOR SALE BY U. S. GEOLOGICAL SURVEY, DENVER, COLORADO 80225, OR WASHINGTON, D. C. 20242  
AND BY THE OKLAHOMA GEOLOGICAL SURVEY, NORMAN, OKLAHOMA 73069  
A FOLDER DESCRIBING TOPOGRAPHIC MAPS AND SYMBOLS IS AVAILABLE ON REQUEST



MAP AND AIR PHOTO  
LIBRARY  
NOV 15 1971  
University of Wisconsin

WAYNOKA NW, OKLA.  
N3637.5—W9852.5/7.5

1969  
AMS 6257 III NW—SERIES V885