

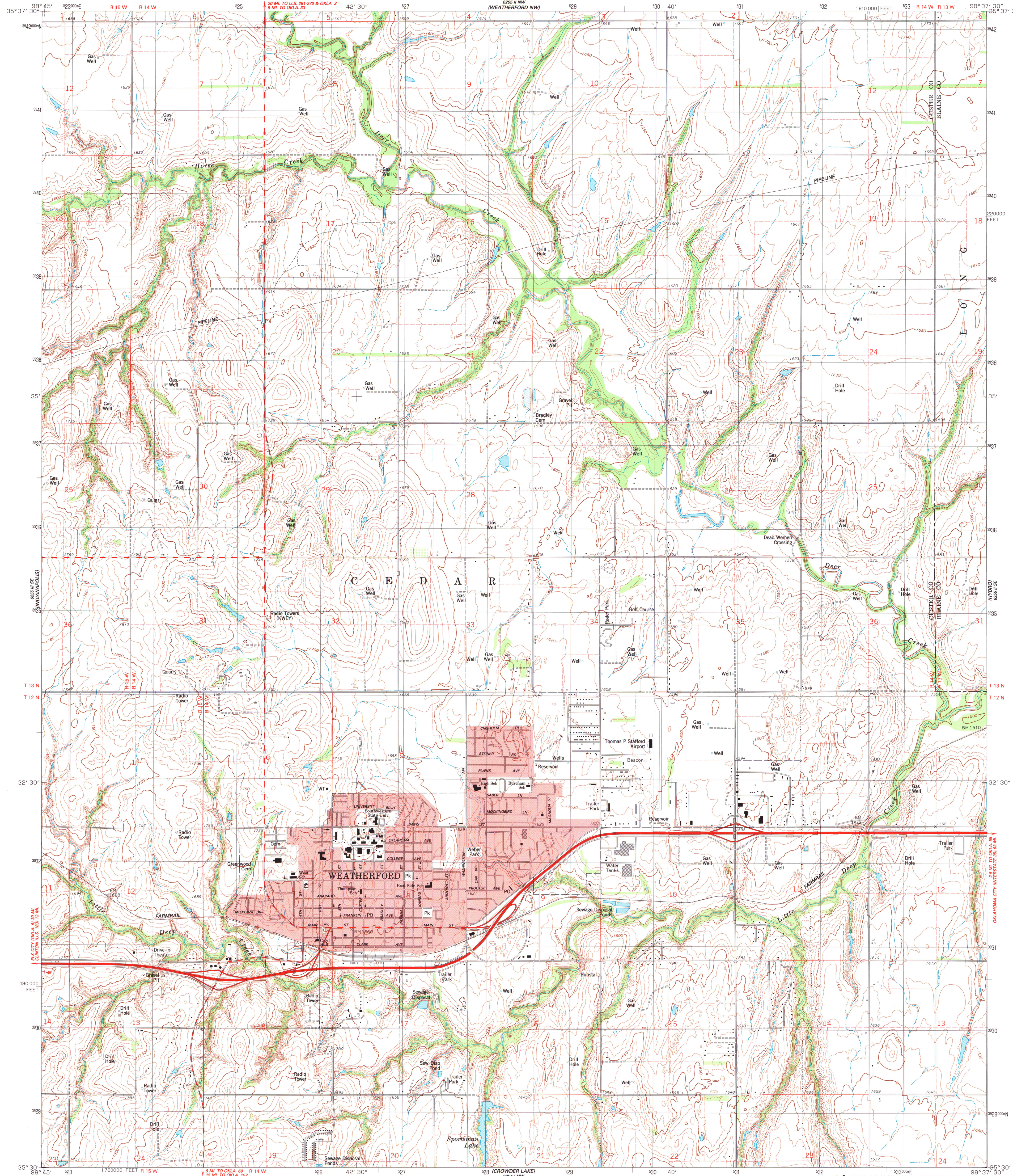
6595 II NW
(WEATHERFORD NW)

UNITED STATES
DEPARTMENT OF THE INTERIOR
GEOLOGICAL SURVEY

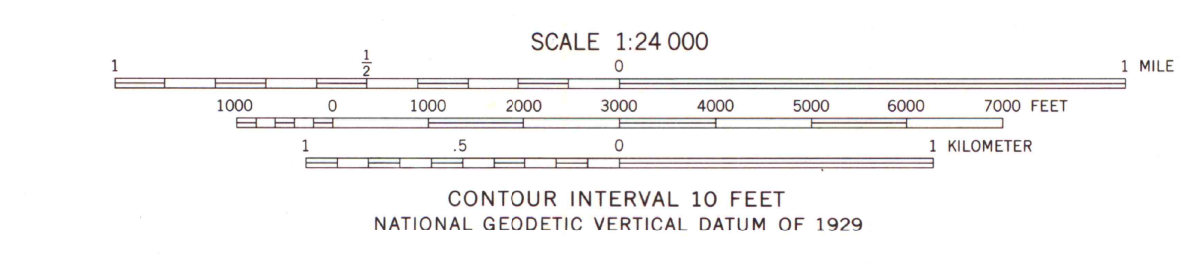
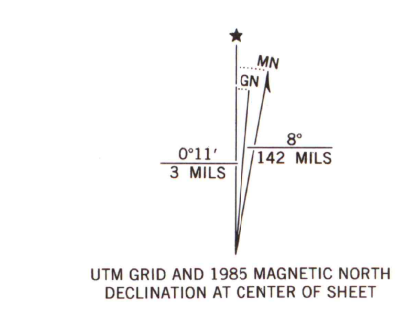
STATE OF OKLAHOMA

WEATHERFORD QUADRANGLE
OKLAHOMA
7.5 MINUTE SERIES (TOPOGRAPHIC)

6595 II SE
(WEATHERFORD SE)



Mapped, edited, and published by the Geological Survey in cooperation with the Oklahoma Highway Department, Oklahoma Water Resources Board, and Oklahoma State Soil Conservation Board
Control by USGS and NOS/NOAA
Topography by photogrammetric methods from aerial photographs taken 1959. Revised from aerial photographs taken 1981
Field checked 1984. Map edited 1985
Projection and 10,000-foot grid ticks: Oklahoma coordinate system, north zone (Lambert conformal conic)
1000-meter Universal Transverse Mercator grid, zone 14
1927 North American Datum
To place on the predicted North American Datum 1983, move the projection lines 3 meters south and 31 meters east as shown by dashed corner ticks
Red tint indicates area in which only landmark buildings are shown
Fine red dashed lines indicate selected fence and field lines where generally visible on aerial photographs. This information is unchecked



CONTOUR INTERVAL 10 FEET
NATIONAL GEODETIC VERTICAL DATUM OF 1929

THIS MAP COMPLIES WITH NATIONAL MAP ACCURACY STANDARDS
FOR SALE BY U.S. GEOLOGICAL SURVEY, DENVER, COLORADO 80225, OR RESTON, VIRGINIA 22092
AND OKLAHOMA GEOLOGICAL SURVEY, NORMAN, OKLAHOMA 73069
A FOLDER DESCRIBING TOPOGRAPHIC MAPS AND SYMBOLS IS AVAILABLE ON REQUEST



ROAD CLASSIFICATION

Primary highway, hard surface	Light-duty road, hard or improved surface
Secondary highway, hard surface	Unimproved road
Interstate Route	U.S. Route
	State Route

WEATHERFORD, OKLA.
SW/4 WEATHERFORD 15' QUADRANGLE
35098-E6-TF-024

U.S. Regional
Depository Copy
DO NOT DISCARD

1985
DMA 6255 II SW-SERIES V883
A.H. ROBINSON
MAP LIBRARY
DEC 20 1985
University of Wisconsin
Madison