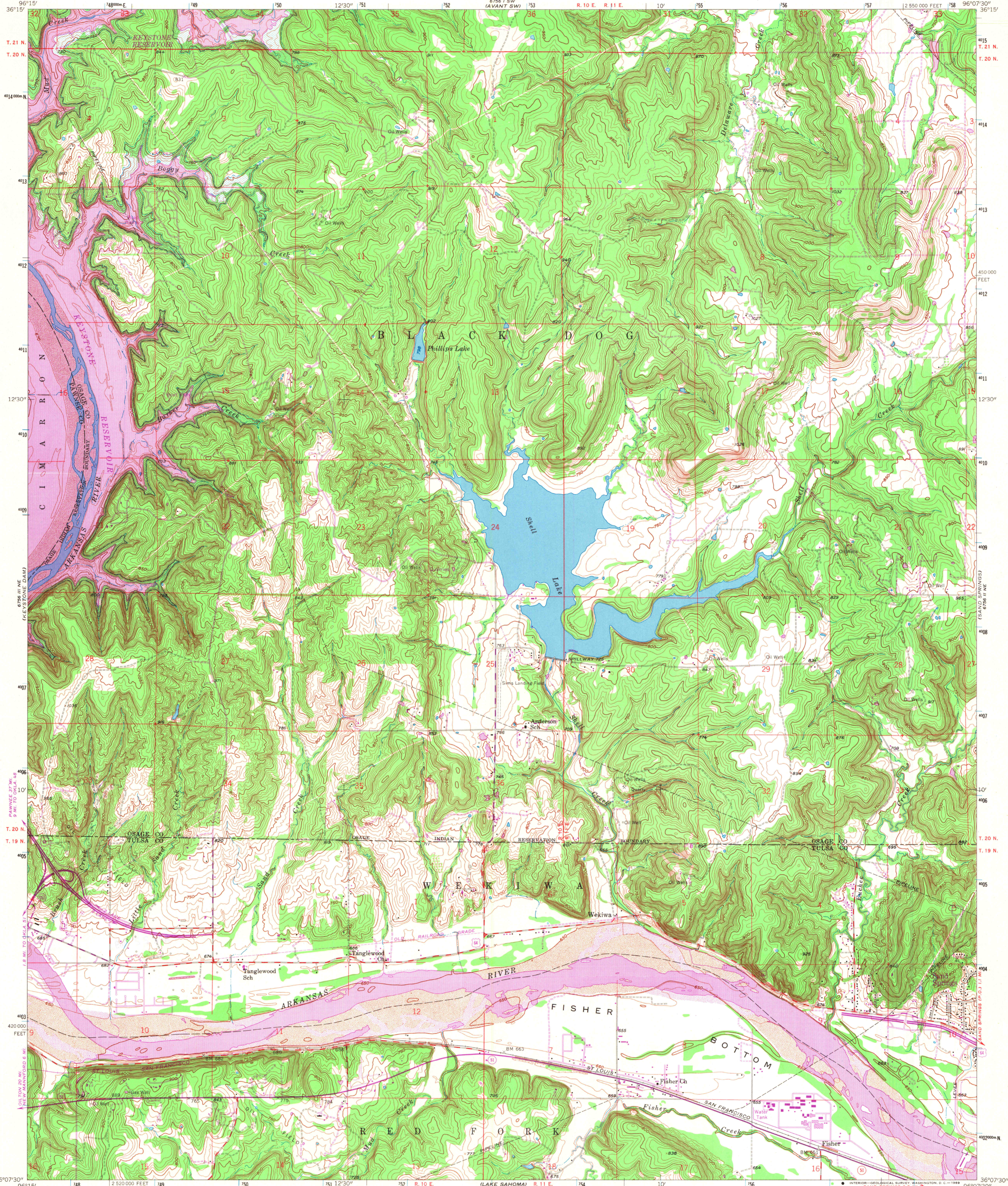
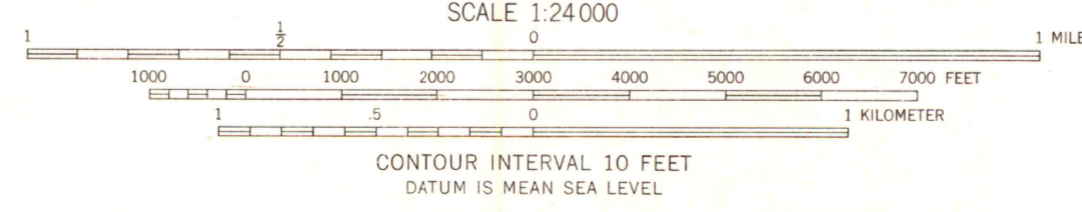
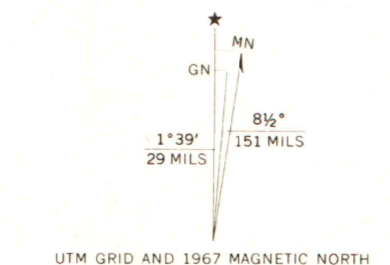


8756 1/2 SE
NEW PAUSE

8756 1/2 SE
(AVANT SE)



Mapped, edited, and published by the Geological Survey
Control by USGS and USC&GS
Topography from aerial photographs by Kelsch plotter
Aerial photographs taken 1957. Field check 1958
Polyconic projection, 1927 North American datum
10,000-foot grid based on Oklahoma coordinate system, north zone
1000-meter Universal Transverse Mercator grid ticks,
zone 14, shown in blue
Areas covered by dashed light-blue pattern subject
to controlled inundation by Keystone Reservoir. Maximum
elevation 754 feet. Power pool elevation 723 feet
Conservation pool elevation 714.5 feet
Revisions shown in purple compiled from aerial photographs
taken 1967. This information not field checked



ROAD CLASSIFICATION

Heavy-duty	Light-duty
Medium-duty	Unimproved dirt
U.S. Route	State Route

THIS MAP COMPLIES WITH NATIONAL MAP ACCURACY STANDARDS
FOR SALE BY U.S. GEOLOGICAL SURVEY, DENVER, COLORADO 80225, OR WASHINGTON, D. C. 20242
A FOLDER DESCRIBING TOPOGRAPHIC MAPS AND SYMBOLS IS AVAILABLE ON REQUEST

MAP AND AIR PHOTO LIBRARY
University of Wisconsin

WEKIWA, OKLA.
N 3607.5-W9607.5/7.5
1958
PHOTOREVISED 1967
AMS 6756 II NW-SERIES W983

8756 1/2 SE
SAND SPRINGS

8756 1/2 SE
SAND SPRINGS

8756 1/2 SE
SAND SPRINGS